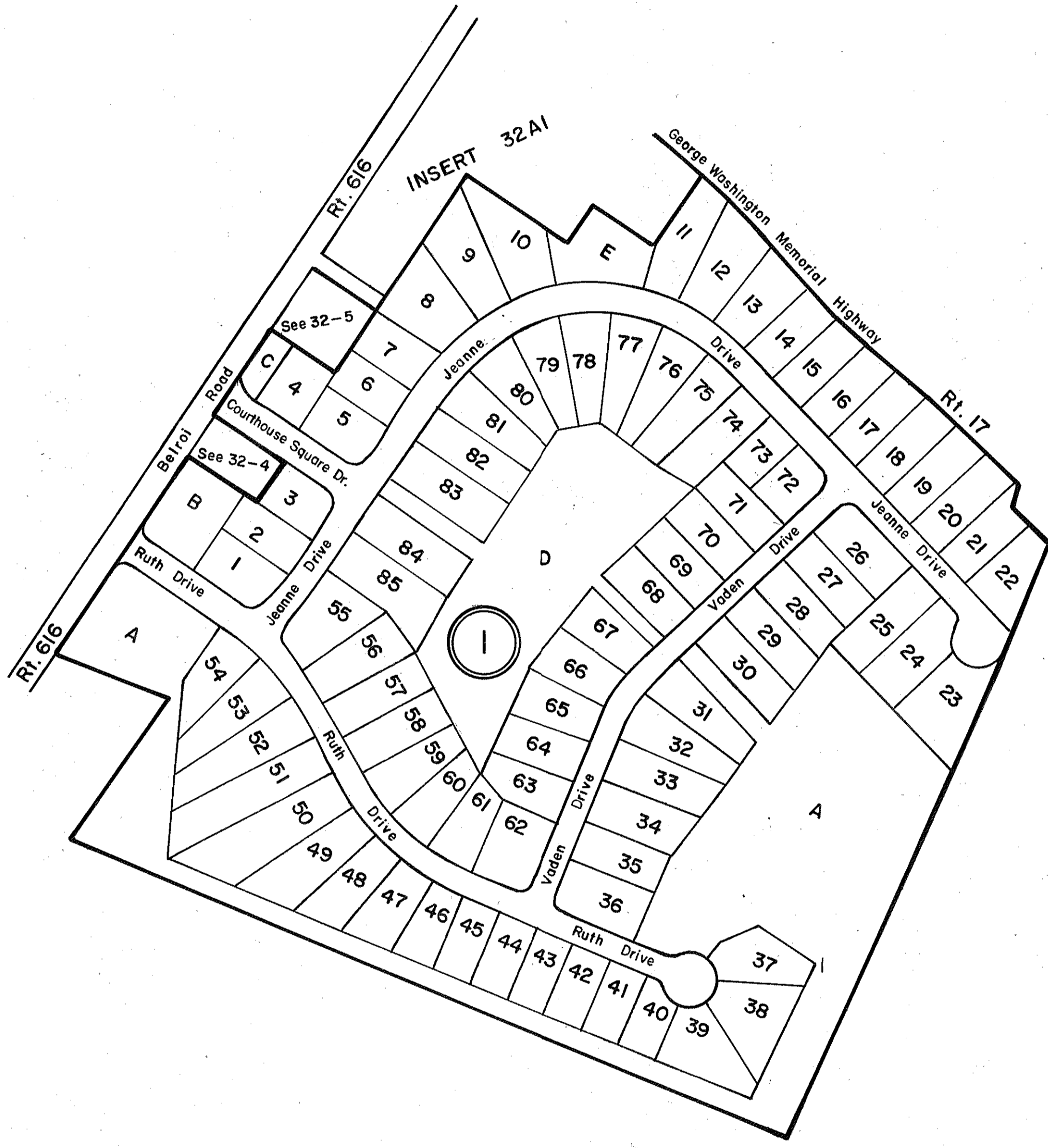
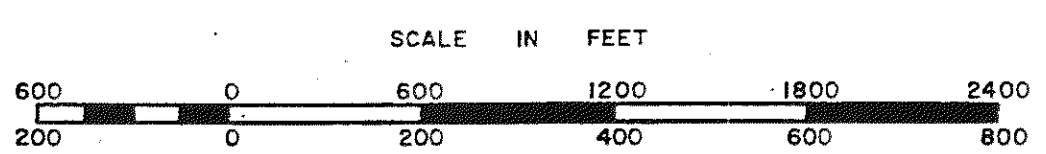


GLOUCESTER COUNTY



① COURTHOUSE SQUARE SUBDIVISION  
LOTS 1-85, A-E  
P.B. 25, Pgs. 572, 572A, 572B, 572C, 572D & 572 E  
ID/065299 6/14/06  
Revised Lots 7-10, P.B. 25, Pg. 749, 749A, 5/6/08



WARE  
DISTRICT

SECTION  
INSERT 32K