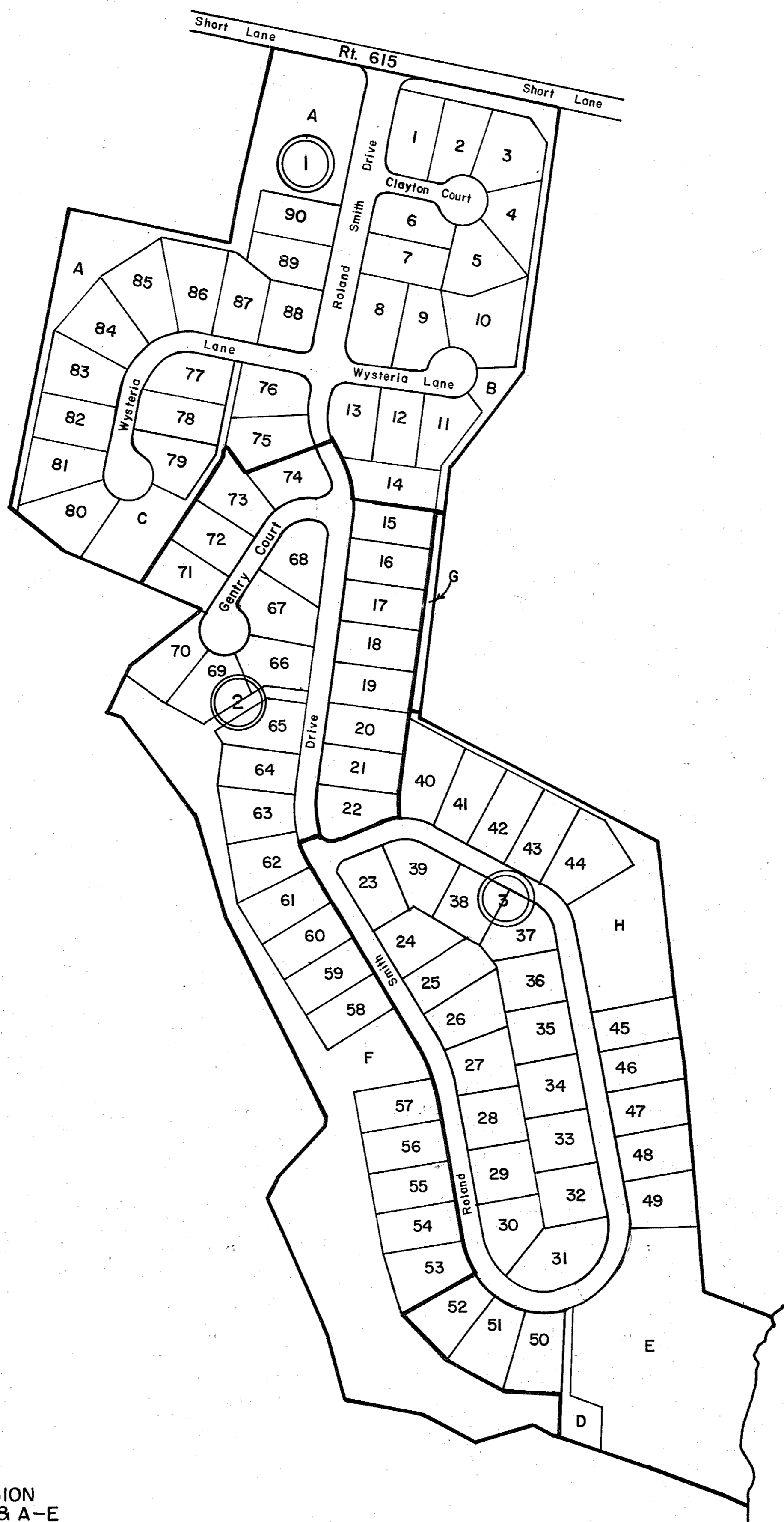


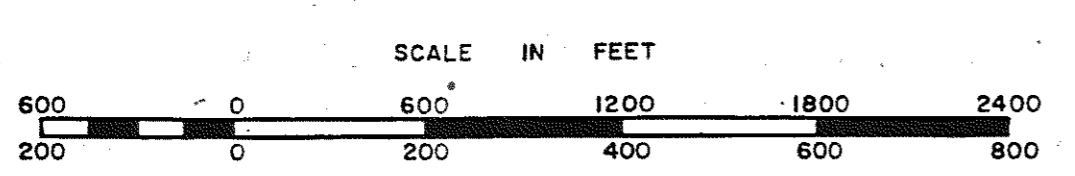
GLOUCESTER COUNTY



① DUNSTON HALL SUBDIVISION
Phase 1, Lots 1-14, 75-82 & A-E
P.B. 25, Pgs. 603, 603A & 603B
ID/0610943 12/28/06

② DUNSTON HALL SUBDIVISION
Phase 2, Lots 15-22, 53-74 & F, G
P.B. 25, Pgs. 674, 674A
ID/076180 8/14/07

③ DUNSTON HALL SUBDIVISION
Phase 3, Lots 23-52 & E, H, J
P.B. 26, Pgs. 13, 13A & 13B
ID/1102738 & ID/1102739, 06/14/11



ABINGDON DISTRICT

SECTION INSERT 32L