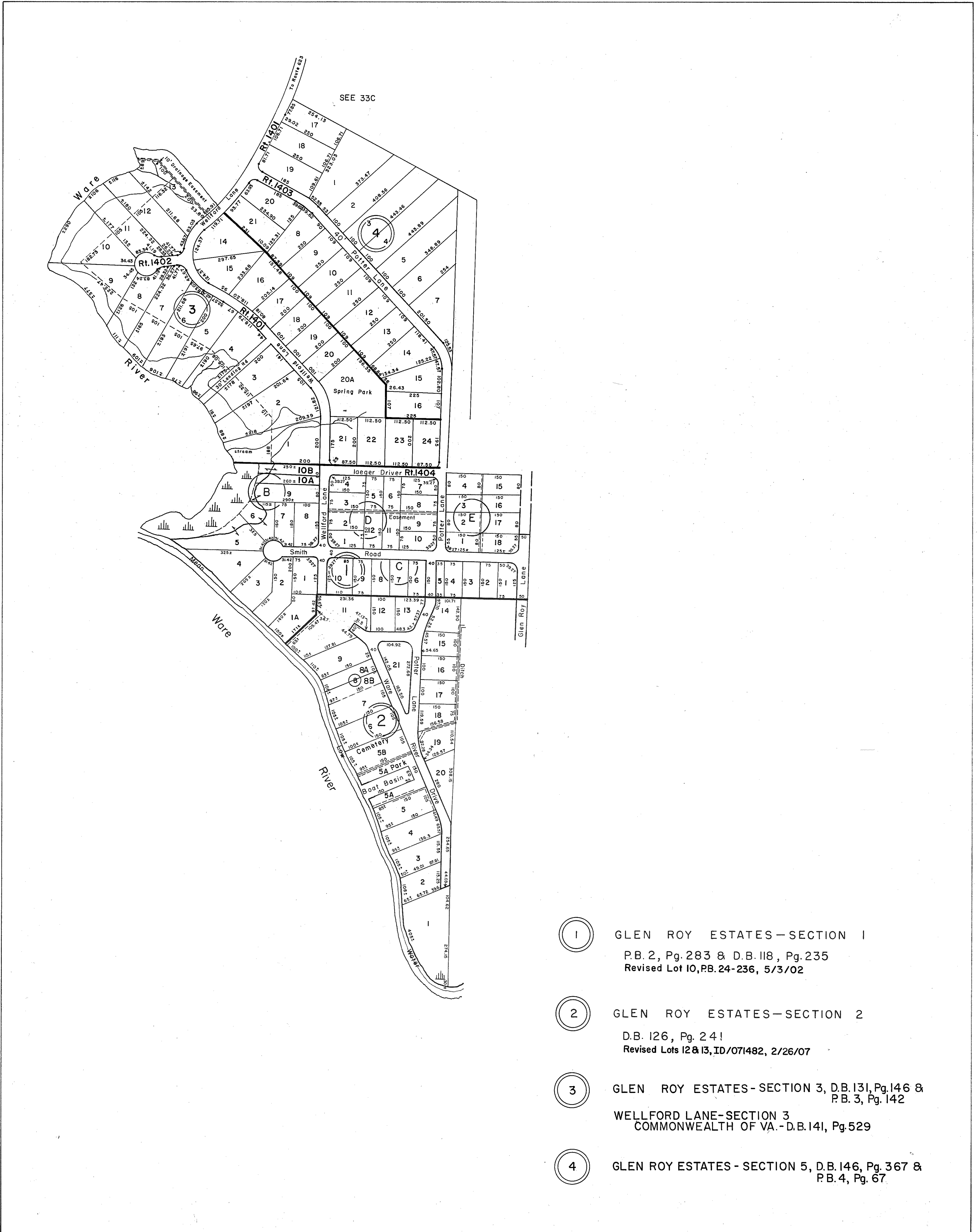


GLOUCESTER COUNTY



- ①

GLEN ROY ESTATES—SECTION 1
 P.B. 2, Pg. 283 & D.B. 118, Pg. 235
 Revised Lot 10, P.B. 24-236, 5/3/02
- ②

GLEN ROY ESTATES—SECTION 2
 D.B. 126, Pg. 241
 Revised Lots 12 & 13, ID/071482, 2/26/07
- ③

GLEN ROY ESTATES—SECTION 3, D.B. 131, Pg. 146 &
 P.B. 3, Pg. 142
 WELLFORD LANE—SECTION 3
 COMMONWEALTH OF VA.—D.B. 141, Pg. 529
- ④

GLEN ROY ESTATES—SECTION 5, D.B. 146, Pg. 367 &
 P.B. 4, Pg. 67

REV. 1/63, 12/75, 12/31/83/84/02/07/12

VA. STATE DEPT. OF TAXATION, DIVISION OF REAL ESTATE APPRAISAL AND MAPPING



WARE DISTRICT

INSERT 33B