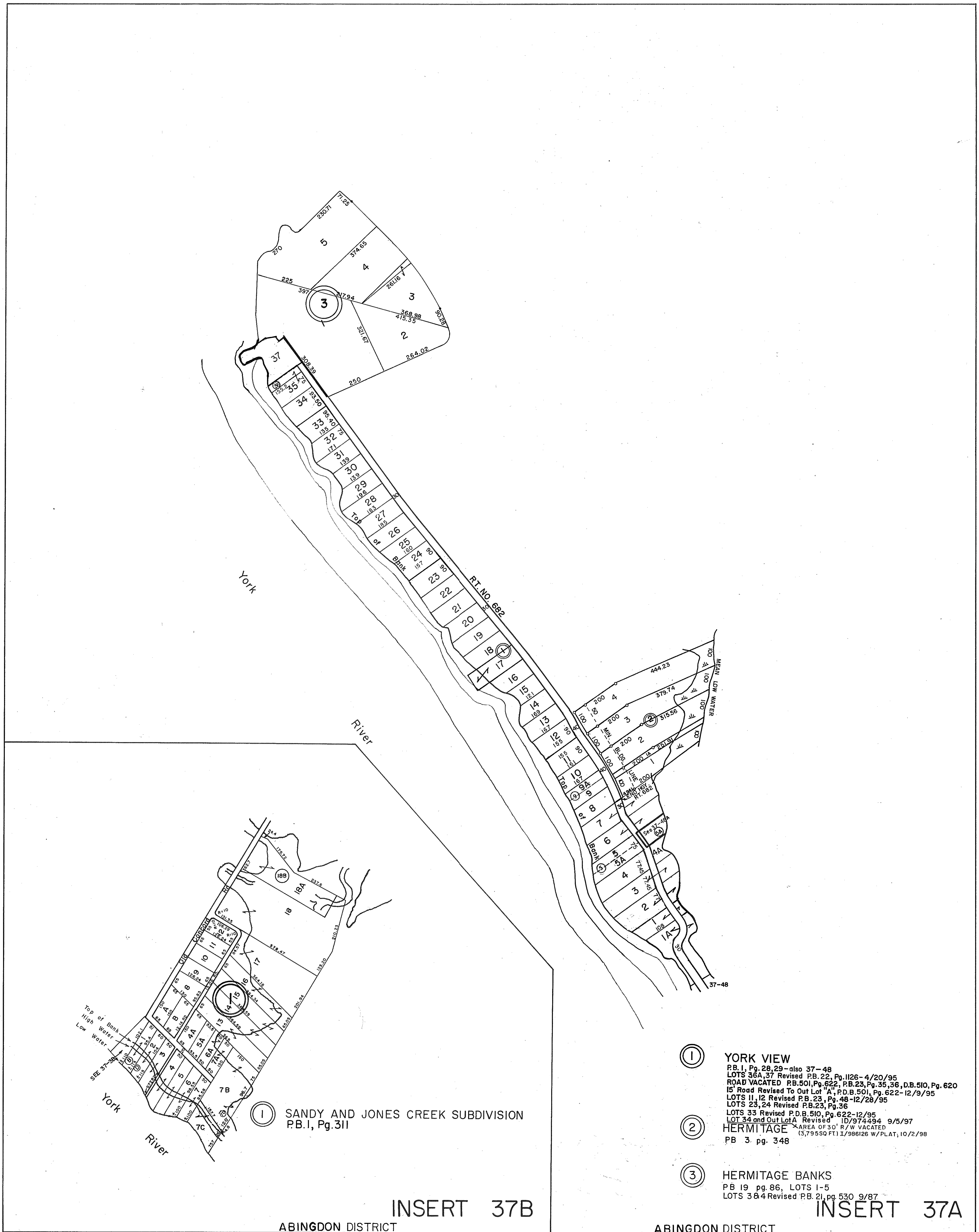


GLOUCESTER COUNTY



REV. 1/63
 REV. 12/75
 REV. 12-31-83/84/87/88/91/92/93/95/97/98/09/10
 SCALE IN FEET
 200 400 600 800

INSERT 37B

ABINGDON DISTRICT

ABINGDON DISTRICT

INSERT 37A

ABINGDON DISTRICT

INSERT 37A & 37B

- ① YORK VIEW
 P.B. 1, Pg. 28, 29 - also 37-48
 LOTS 36A, 37 Revised P.B. 22, Pg. 1126-4/20/95
 ROAD VACATED P.B. 501, Pg. 622, P.B. 23, Pg. 35, 36, D.B. 510, Pg. 620
 15' Road Revised To Out Lot 'A', P.D.B. 501, Pg. 622-12/9/95
 LOTS 11, 12 Revised P.B. 23, Pg. 48-12/28/95
 LOTS 23, 24 Revised P.B. 23, Pg. 36
- ② HERMITAGE
 LOTS 33 Revised P.D.B. 510, Pg. 622-12/95
 LOT 34 and Out Lot 'A' Revised ID/974434 9/5/97
 AREA OF 30' R/W VACATED
 (3,79550 SQ FT) 1/986126 W/PLAT, 10/2/98
 PB 3, pg. 348
- ③ HERMITAGE BANKS
 PB 19, pg. 86, LOTS 1-5
 LOTS 3 & 4 Revised P.B. 21, pg. 530 9/87