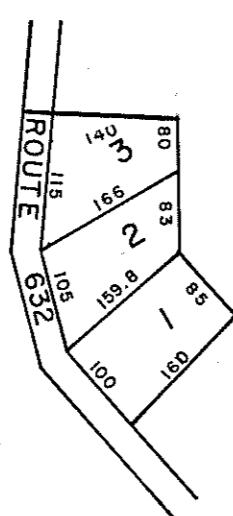
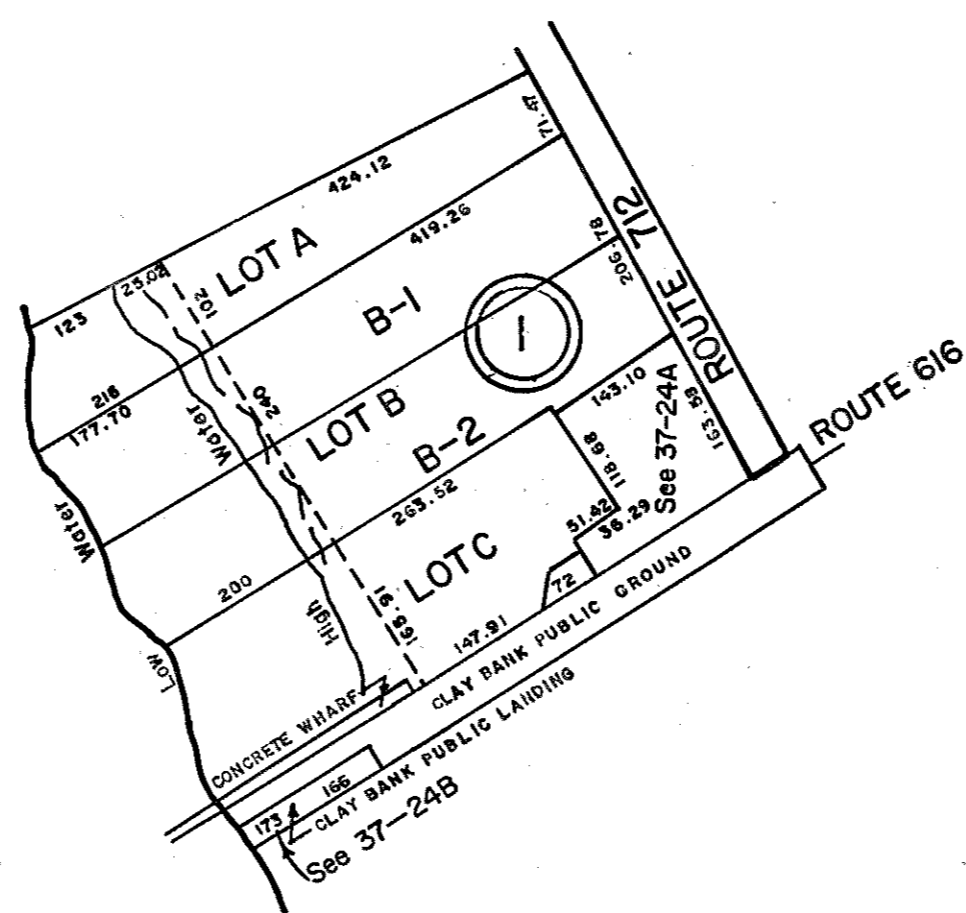


GLOUCESTER COUNTY



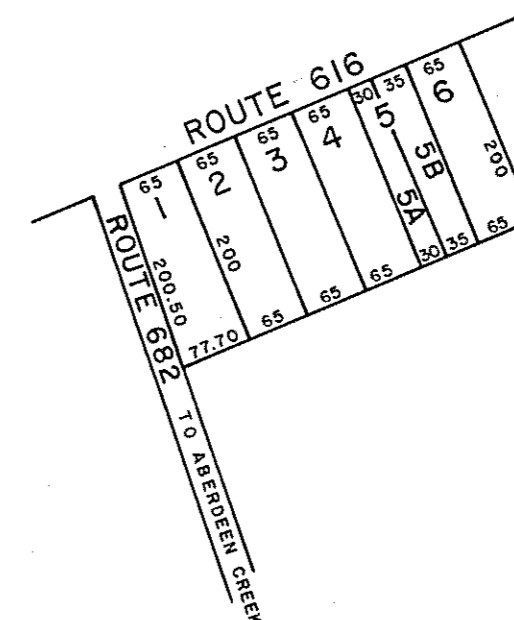
① A. A. LEIGH LOTS
D. B. 106, Pg. 105

ABINGDON DISTRICT **INSERT 37D**



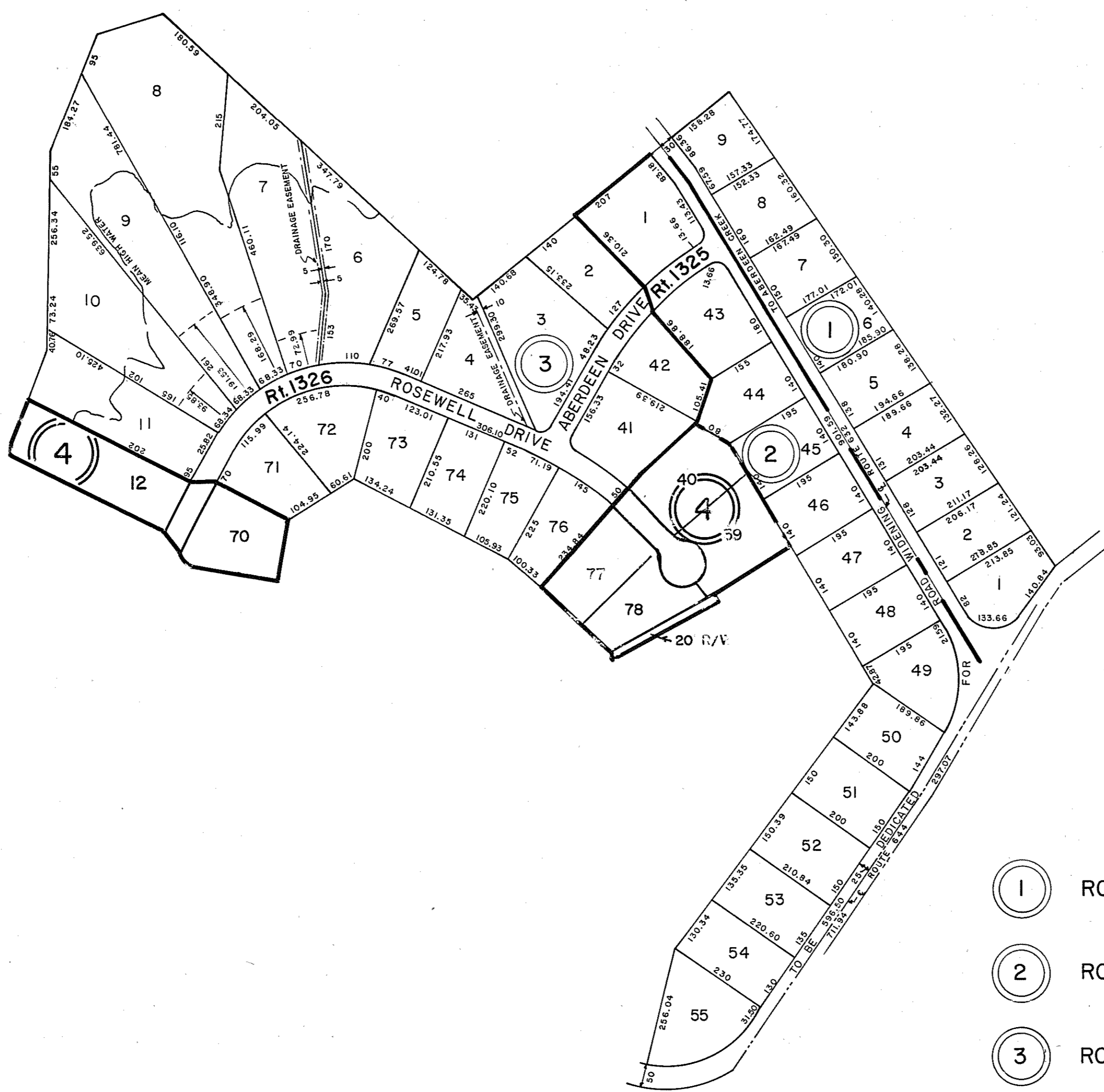
① MAP OF LOTS A, B, C
OWNED BY LOUIS GROH
PB 3, Pg. 162
P-DB 178-164

ABINGDON DISTRICT **INSERT 37E**



① FANNIE M. ROWE LOTS
REVISED
PB 4, Pg. 181

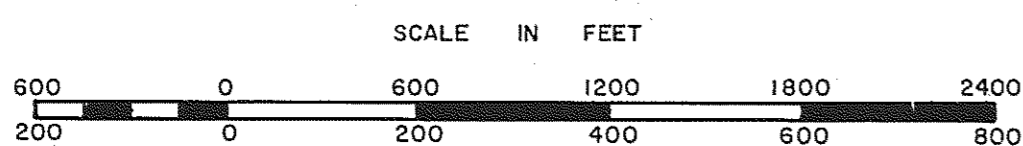
ABINGDON DISTRICT **INSERT 37G**



- ① ROSEWELL FARM P. B. 4, Pg. 82
- ② ROSEWELL HARBOR-SECTION 1 - P. B. 6, Pg. 215
- ③ ROSEWELL HARBOR-SECTION 2 - P. B. 7, Pg. 75
- ④ ROSEWELL HARBOR - SECTION 3 - P. B. 15, Pg. 122
LOTS 12, 39, 40, 70, 77, & 78

ABINGDON DISTRICT

INSERT 37F



ABINGDON DISTRICT

SECTION _____
INSERT 37D, E, F, G