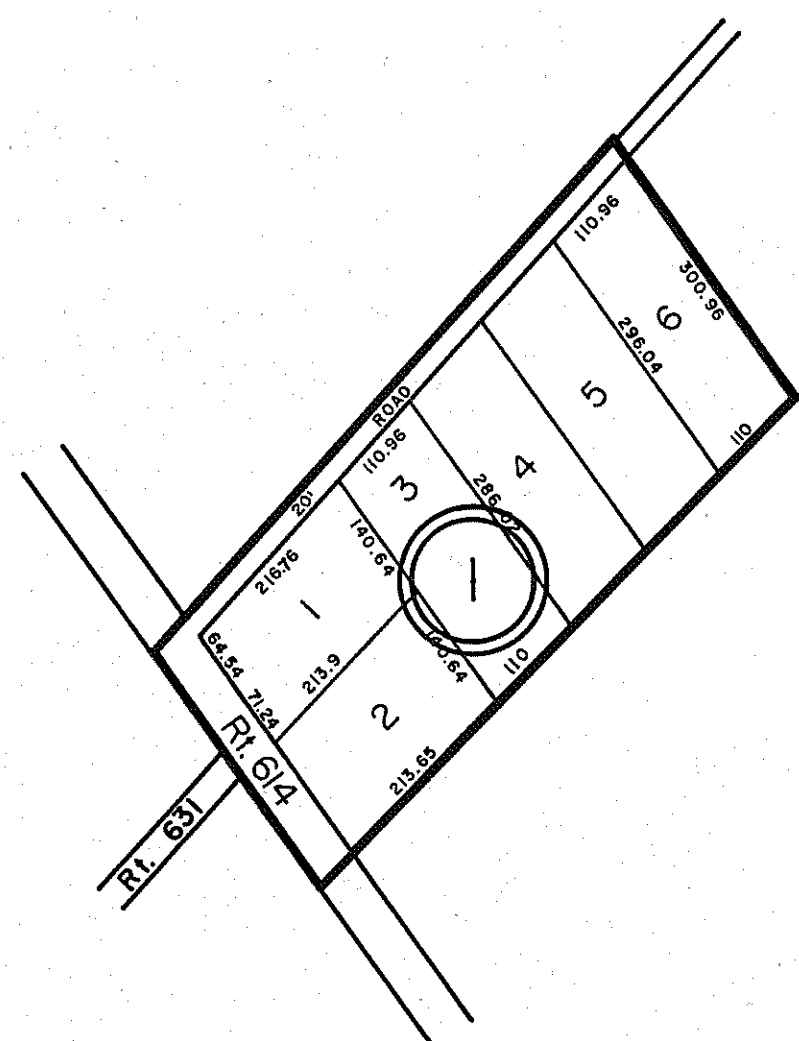


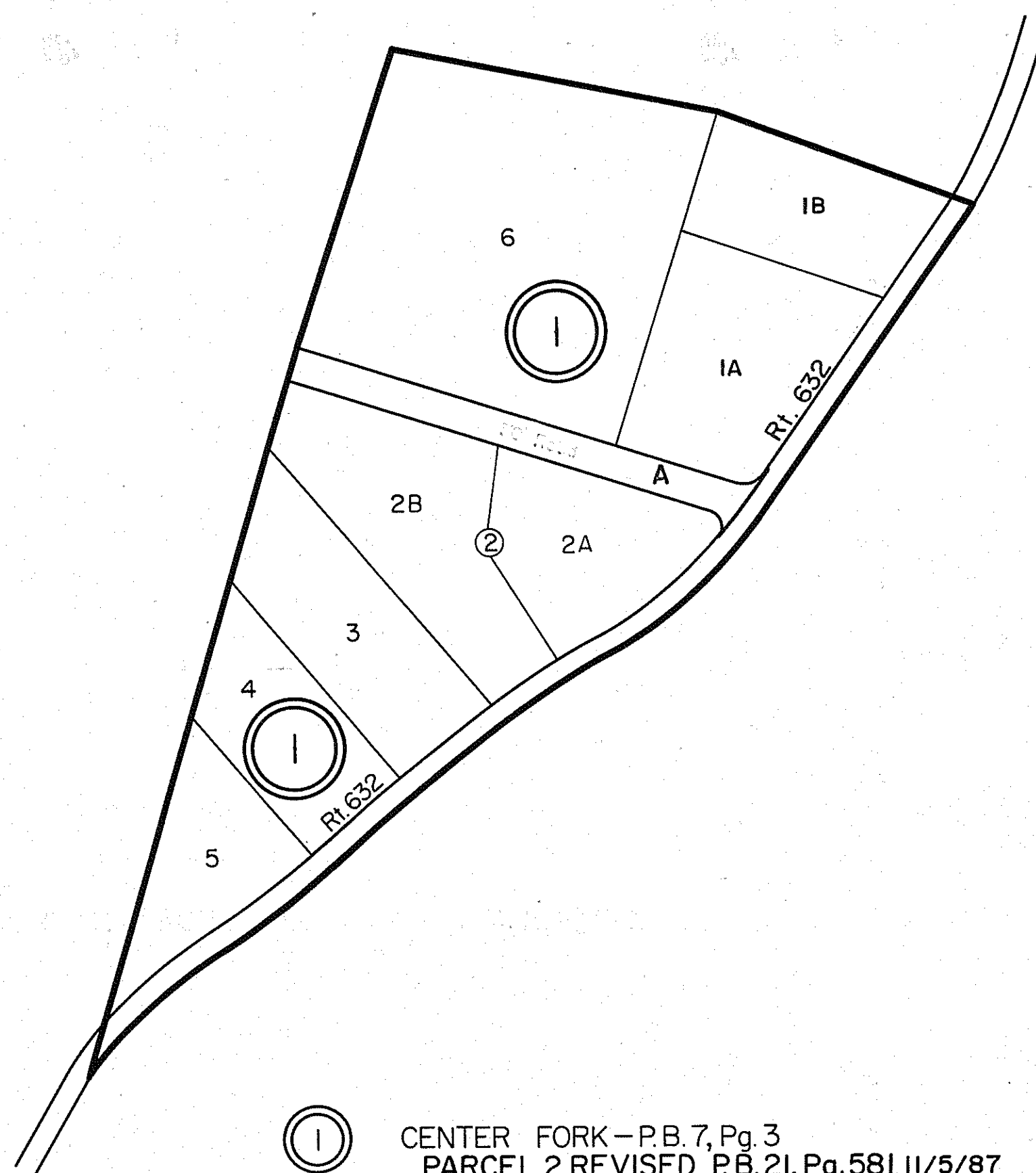
GLOUCESTER COUNTY



① NORMAN GROH PROPERTY - P.B. 2, Pg. 59

ABINGDON DISTRICT

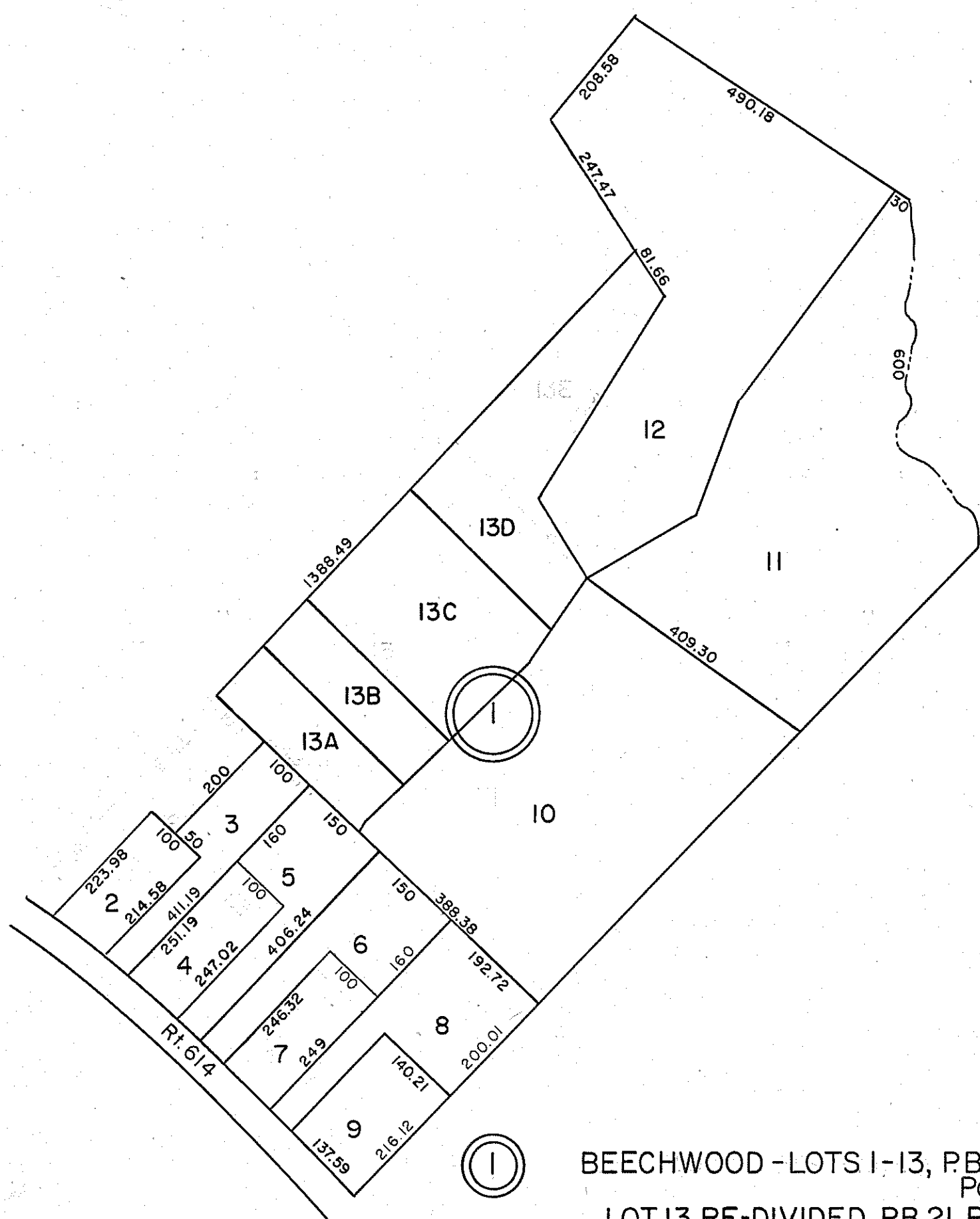
INSERT 38A



① CENTER FORK - P.B. 7, Pg. 3
PARCEL 2 REVISED P.B. 21, Pg. 581 11/5/87
LOT 1 REVISED P.B. 23, Pg. 282 2/11/97

ABINGDON DISTRICT

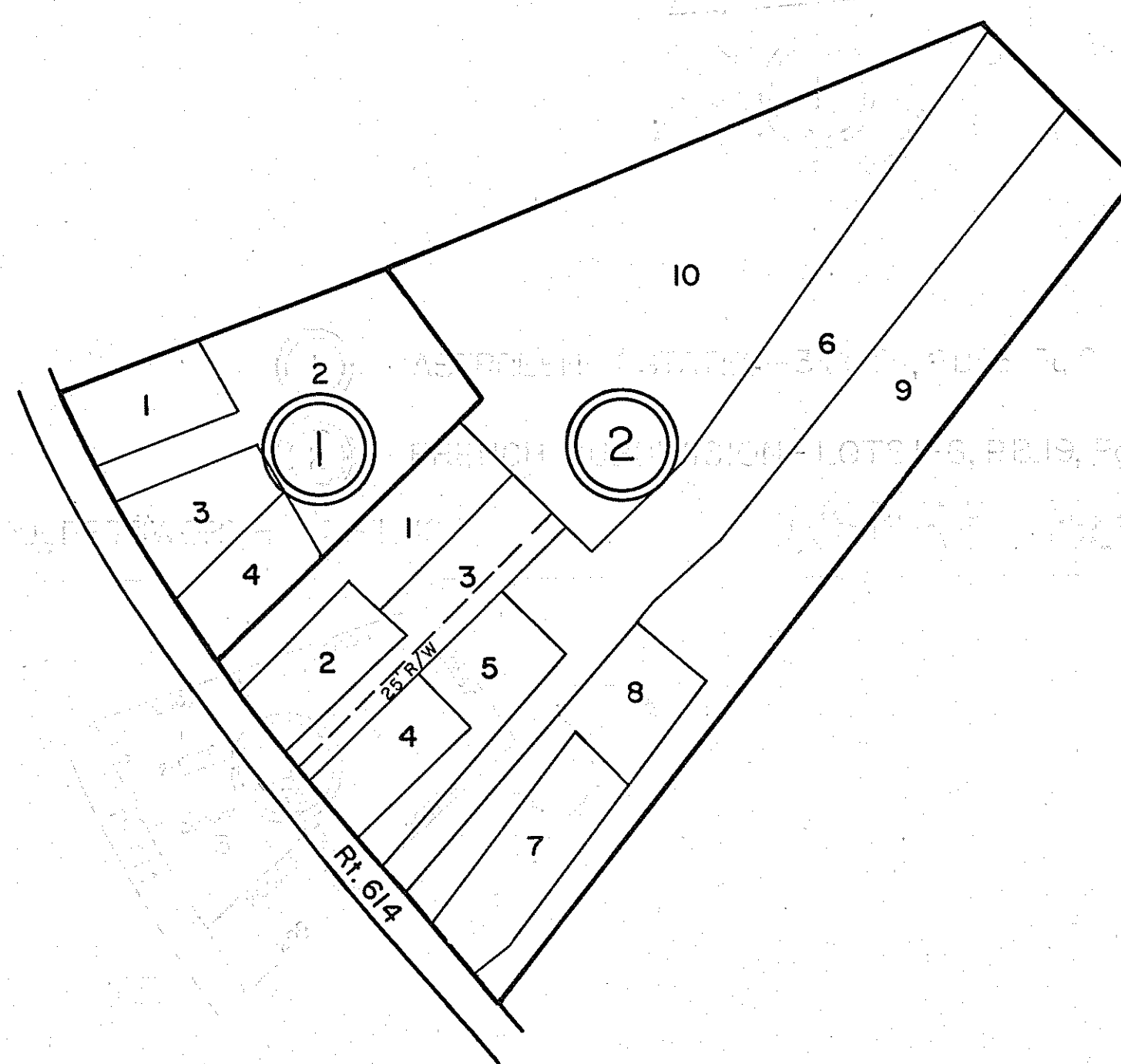
INSERT 38B



① BEECHWOOD - LOTS 1-13, P.B. 20, Pgs. 456 & 456A
LOT 13 RE-DIVIDED P.B. 21, Pg. 192 8/86
LOT 13D REVISED P.B. 22, Pg. 196 10/19/90

ABINGDON DISTRICT

INSERT 38F



① MATHEW SUBDIVISION - LOTS 1-4, P.B. 20, Pg. 215
② NEST HEIGHTS - P.B. 20, Pg. 511 2-9-84
LOTS 7&8 REVISED P.B. 21, Pg. 317 12/31/86
LOTS 7&8 REVISED P.B. 21, Pg. 1070 8/8/89
LOT 2 HPB 8/253, 1/13/04

ABINGDON DISTRICT

INSERT 38E

REV. 1/63, 3/25/80, 12/31, 83/84/86/87/89/90/91/92 /97/04/09/13



ABINGDON

DISTRICT

SECTION
INSERT 38A, B, E, F,