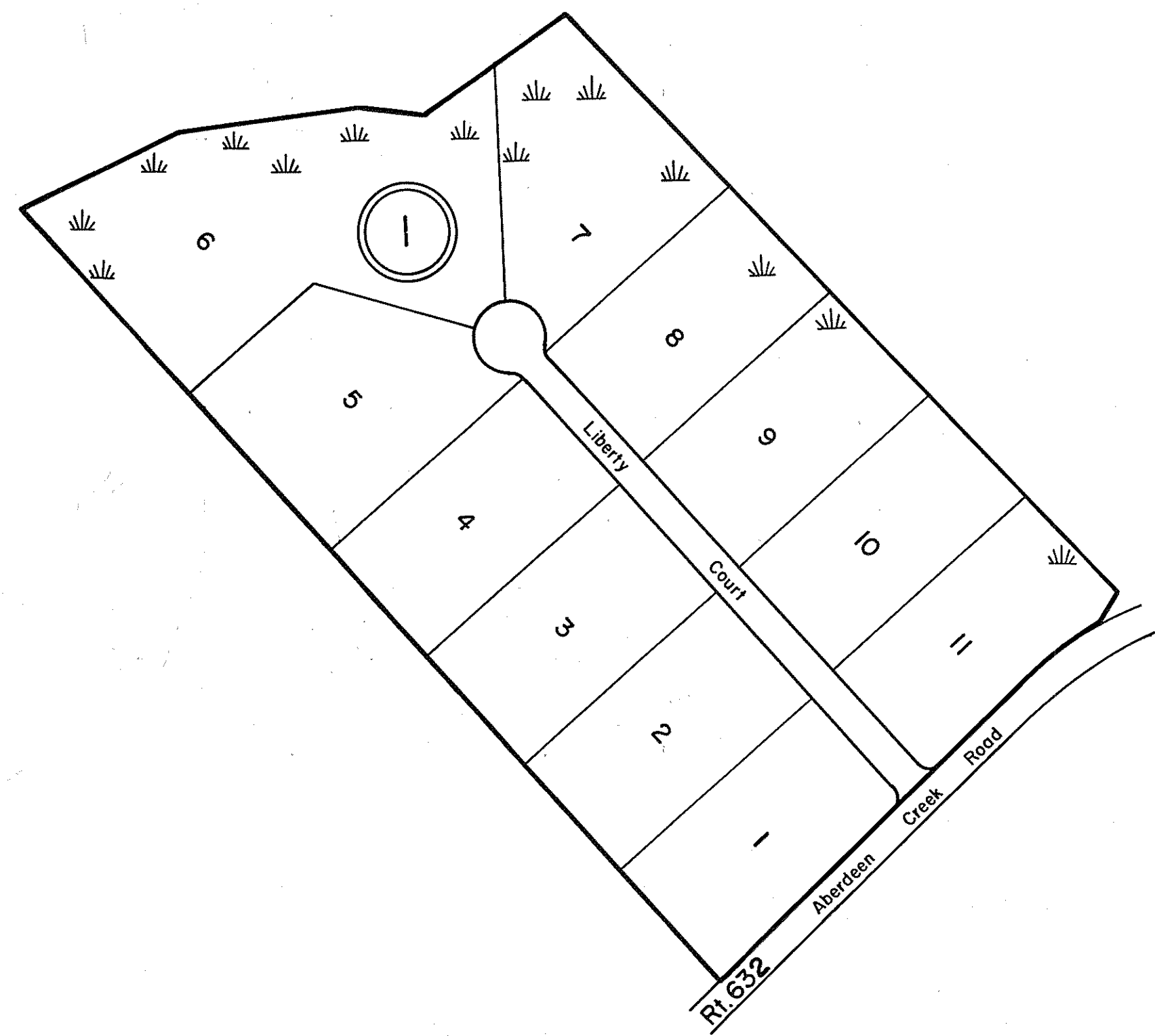
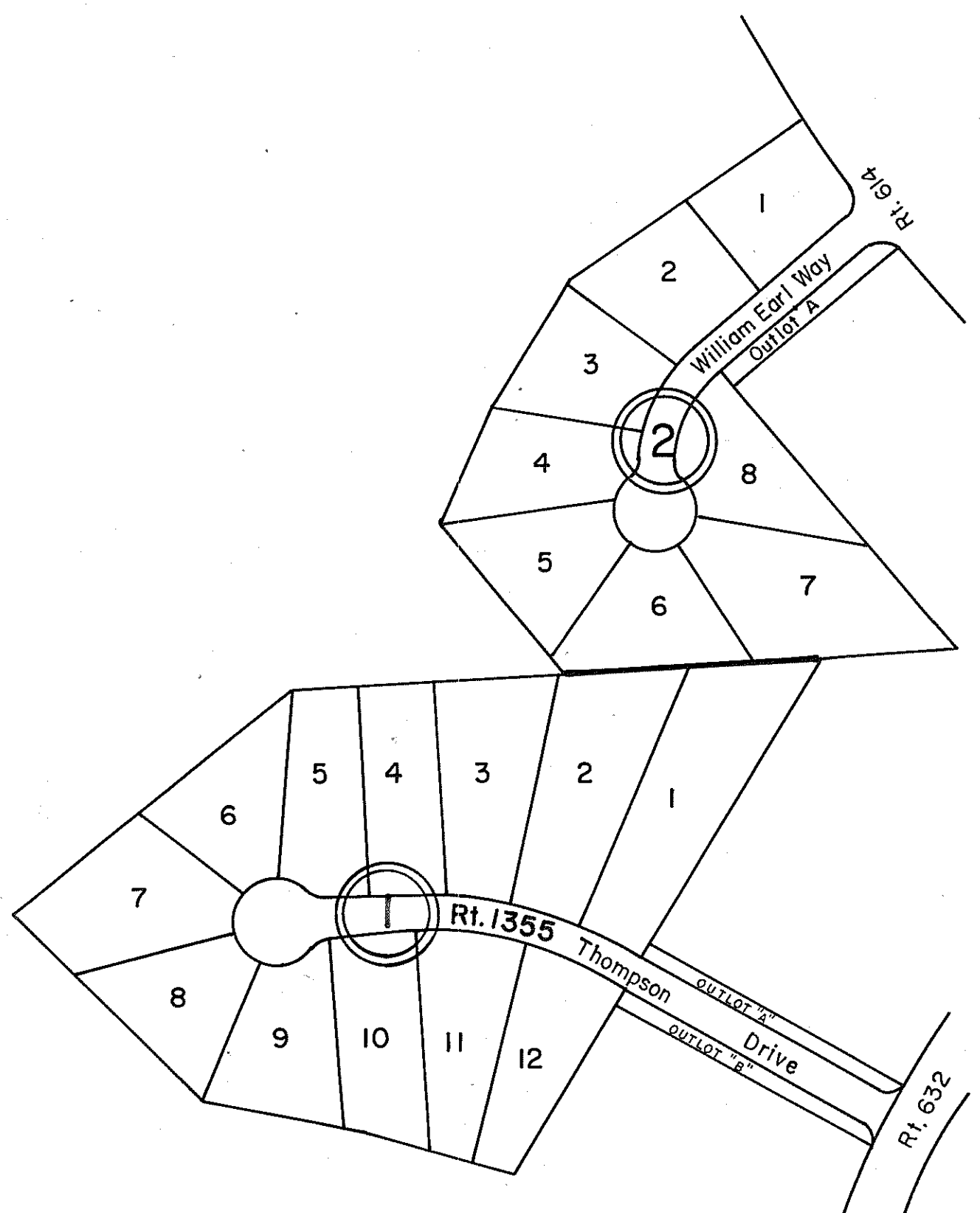


GLOUCESTER COUNTY



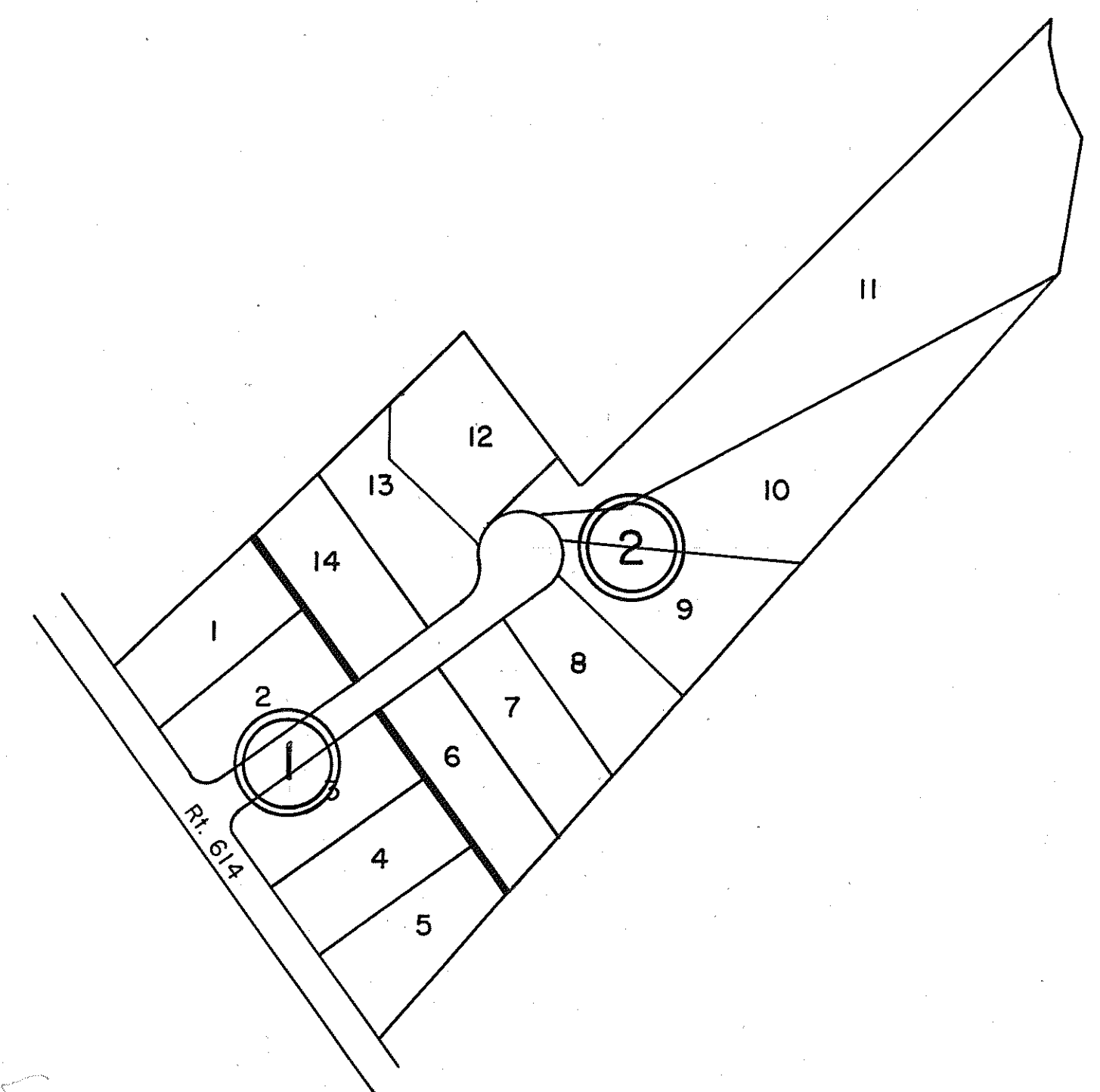
① WOODVILLE ESTATES  
 LOTS 1-11  
 ID/0044383, ID/073909  
 P.B. 25, Pgs. 654 & 654A  
 3/12/07

INSERT 38M



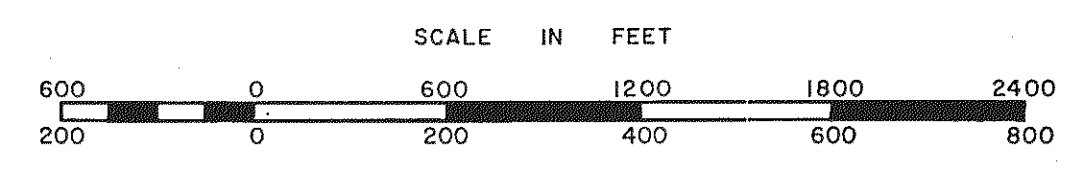
① CRESCENT RUN  
 SECTION ONE-LOTS 1-12  
 P.B. 21, Pg. 68 5/6/86  
 ② NEEDHAM ESTATES  
 LOTS 1-8  
 P.B. 21, Pg. 682  
 2/16/88

INSERT 38K



① N.T. JONES SUBDIVISION  
 SECTION ONE - LOTS 1-5  
 P.B. 21, Pg. 547 10/2/87  
 ② MEADOWVIEW  
 LOTS 6-14  
 P.B. 22, Pg. 83  
 5/11/90

INSERT 38L



ABINGDON DISTRICT

SECTION  
 INSERT 38K,L,M