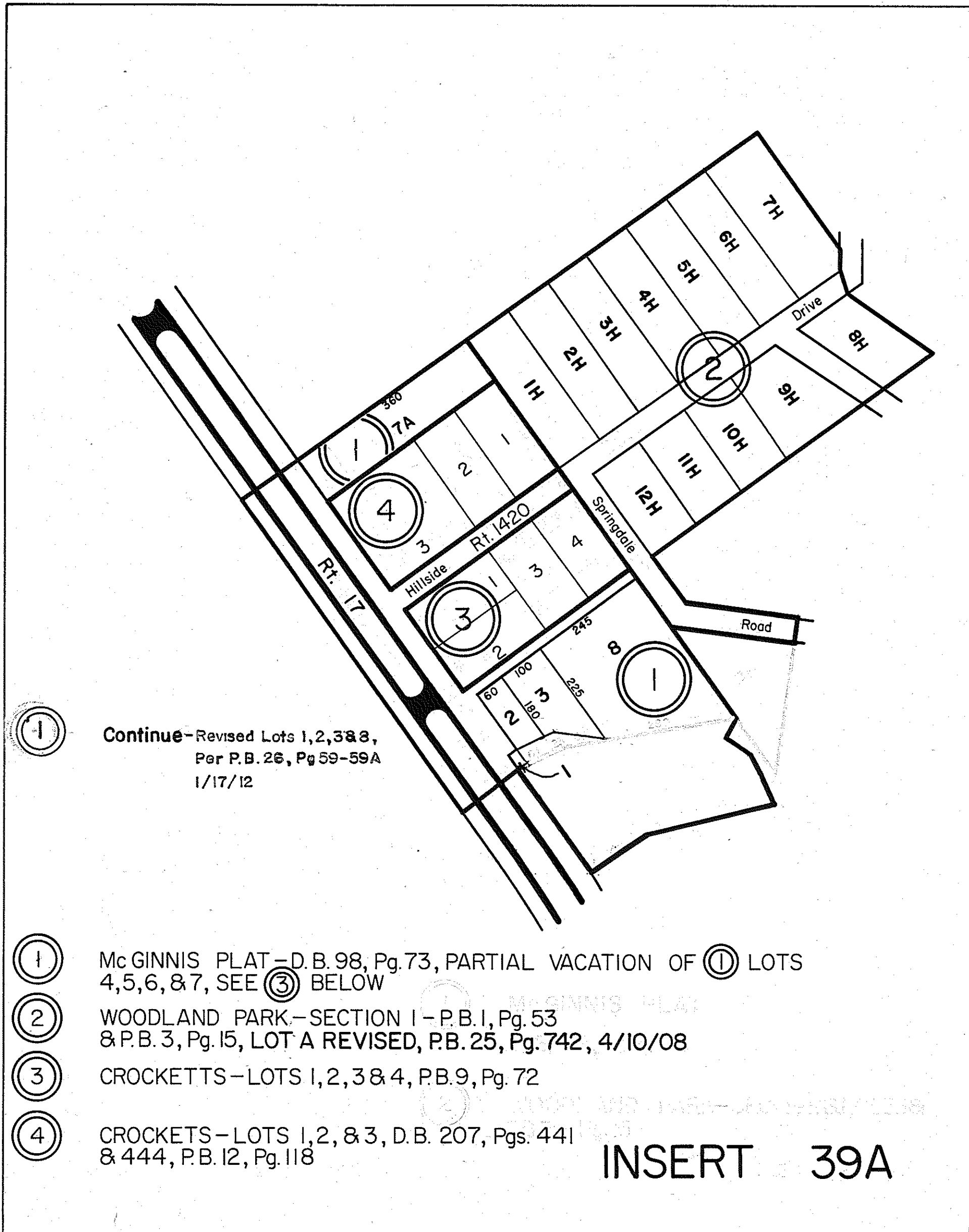


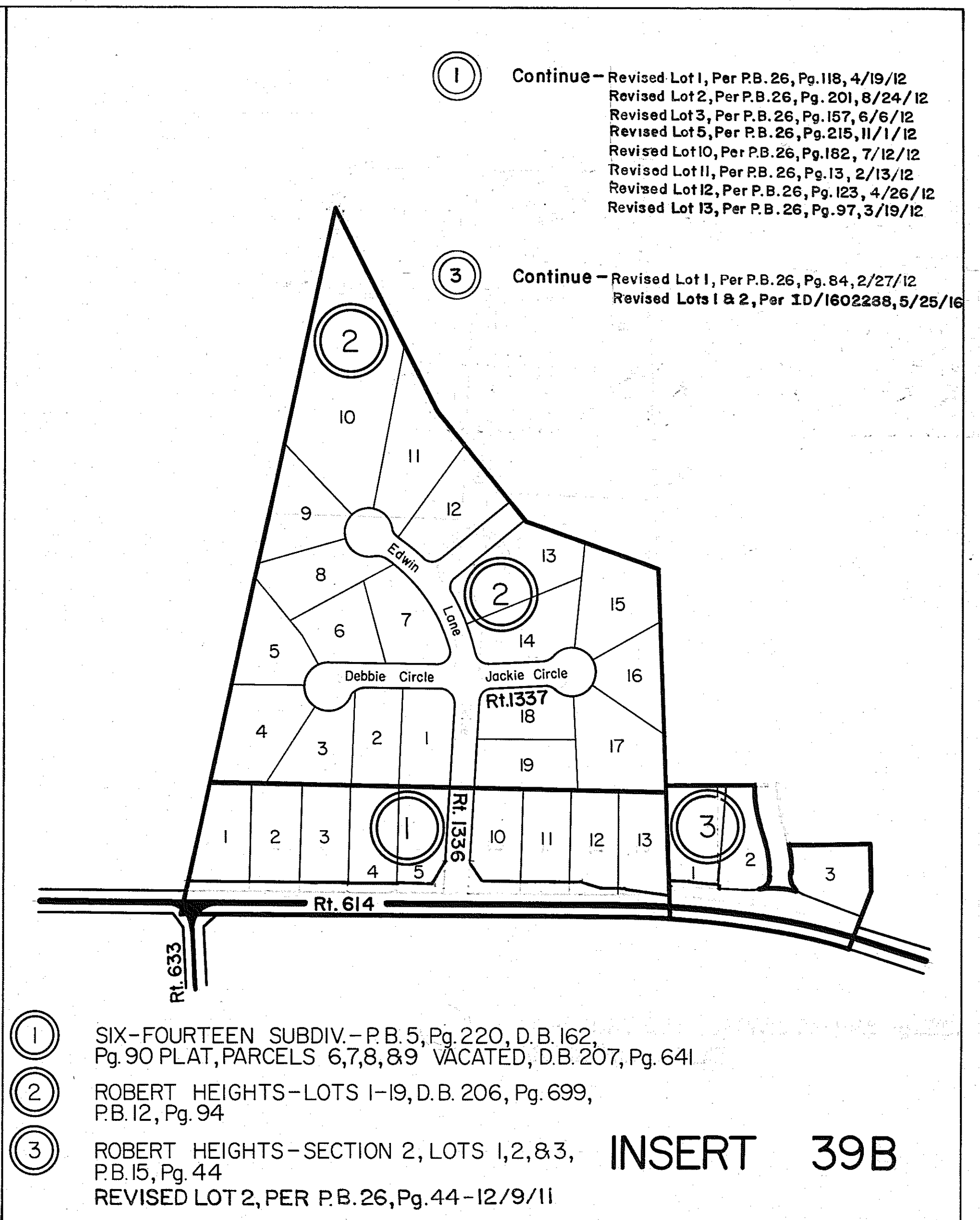
GLOUCESTER COUNTY



① Continue-Revised Lots 1, 2, 3 & 4, Per P.B. 26, Pg 59-59A 1/17/12

- ① McGINNIS PLAT-D.B. 98, Pg. 73, PARTIAL VACATION OF ① LOTS 4, 5, 6, & 7, SEE ③ BELOW
- ② WOODLAND PARK-SECTION I-P.B. 1, Pg. 53 & P.B. 3, Pg. 15, LOT A REVISED, P.B. 25, Pg. 742, 4/10/08
- ③ CROCKETTS-LOTS 1, 2, 3 & 4, P.B. 9, Pg. 72
- ④ CROCKETTS-LOTS 1, 2, & 3, D.B. 207, Pgs. 441 & 444, P.B. 12, Pg. 118

INSERT 39A

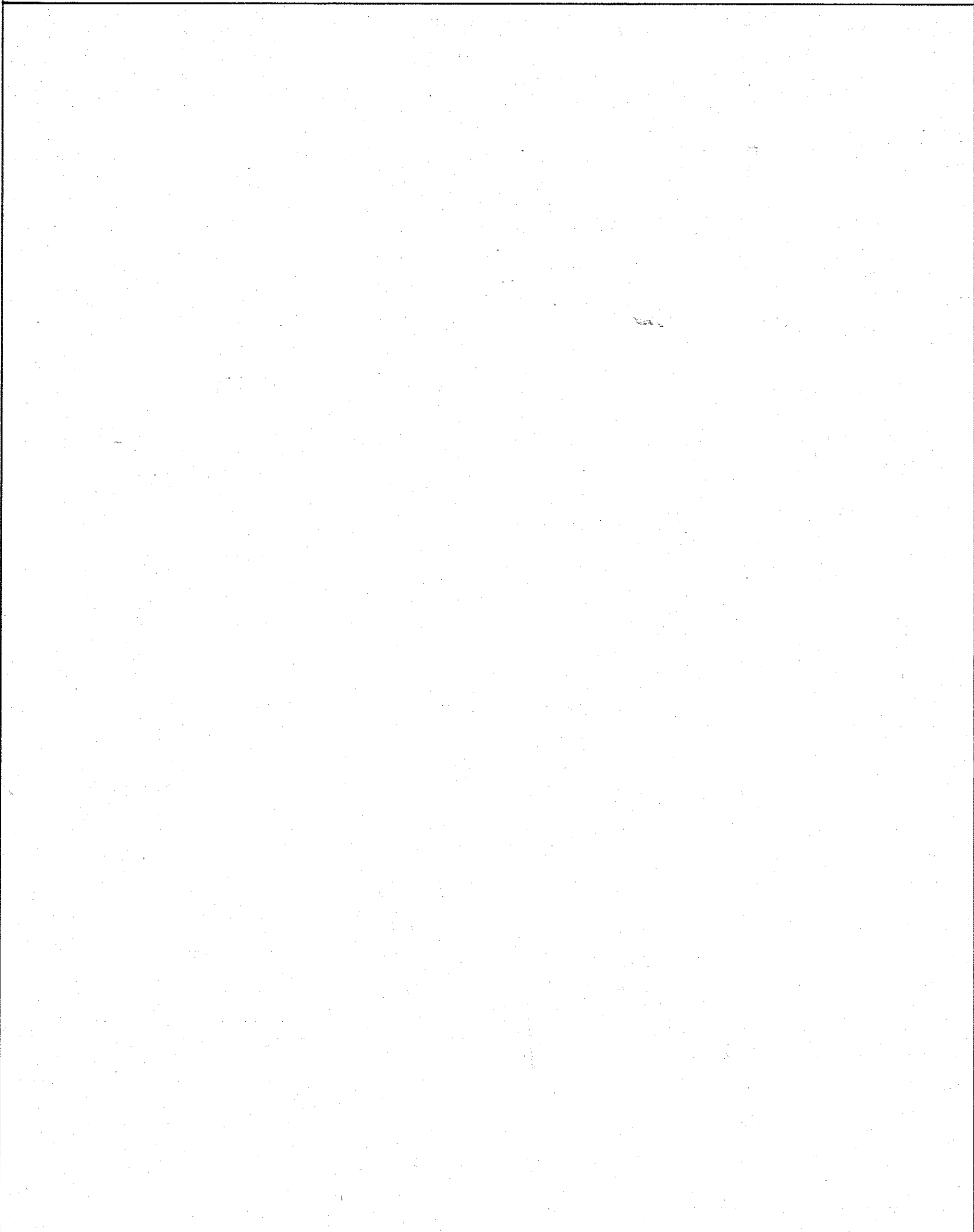


① Continue-Revised Lot 1, Per P.B. 26, Pg. 118, 4/19/12
 Revised Lot 2, Per P.B. 26, Pg. 201, 8/24/12
 Revised Lot 3, Per P.B. 26, Pg. 157, 6/6/12
 Revised Lot 5, Per P.B. 26, Pg. 215, 11/1/12
 Revised Lot 10, Per P.B. 26, Pg. 182, 7/12/12
 Revised Lot 11, Per P.B. 26, Pg. 13, 2/13/12
 Revised Lot 12, Per P.B. 26, Pg. 123, 4/26/12
 Revised Lot 13, Per P.B. 26, Pg. 97, 3/19/12

③ Continue-Revised Lot 1, Per P.B. 26, Pg. 84, 2/27/12
 Revised Lots 1 & 2, Per 1D/1602238, 5/25/16

- ① SIX-FOURTEEN SUBDIV.-P.B. 5, Pg. 220, D.B. 162, Pg. 90 PLAT, PARCELS 6, 7, 8, & 9 VACATED, D.B. 207, Pg. 641
- ② ROBERT HEIGHTS-LOTS 1-19, D.B. 206, Pg. 699, P.B. 12, Pg. 94
- ③ ROBERT HEIGHTS-SECTION 2, LOTS 1, 2, & 3, P.B. 15, Pg. 44
 REVISED LOT 2, PER P.B. 26, Pg. 44-12/9/11

INSERT 39B



① Continue-Revised Lot 1, Per P.B. 26, Pg. 170, 6/20/12
 Revised Lot 2, Per P.B. 26, Pg. 167, 6/19/11
 Revised Lot 3, Per P.B. 26, Pg. 112, 4/13/12
 Revised Lot 4, Per P.B. 26, Pg. 132, 5/12/12

- ① MARSCO ESTATES LOTS 1-4, P.B. 14, Pg. 88
- ② CLOPTON HEIGHTS LOTS 1-10 & 33-42 REVISED LOT LINES OF 8, 9 & 10 (P.B. 17, Pg. 36) & P.B. 17, Pg. 132 (VACATED) & P.B. 19, Pg. 37
- ③ CLOPTON HEIGHTS LOTS 11-32, P.B. 17, Pg. 133

INSERT 39C

REV. 1/63
 3/25/80, 12/31/83, 8/4/92, 10/8/12, 13/16

SCALE IN FEET
 0 200 400 600 800

REVISED: 9/8/71/11/12/13/16

ABINGDON DISTRICT

VIRGINIA STATE DEPARTMENT OF TAXATION, DIVISION OF REAL ESTATE APPRAISAL AND MAPPING

INSERT 39A, 39B, & 39C