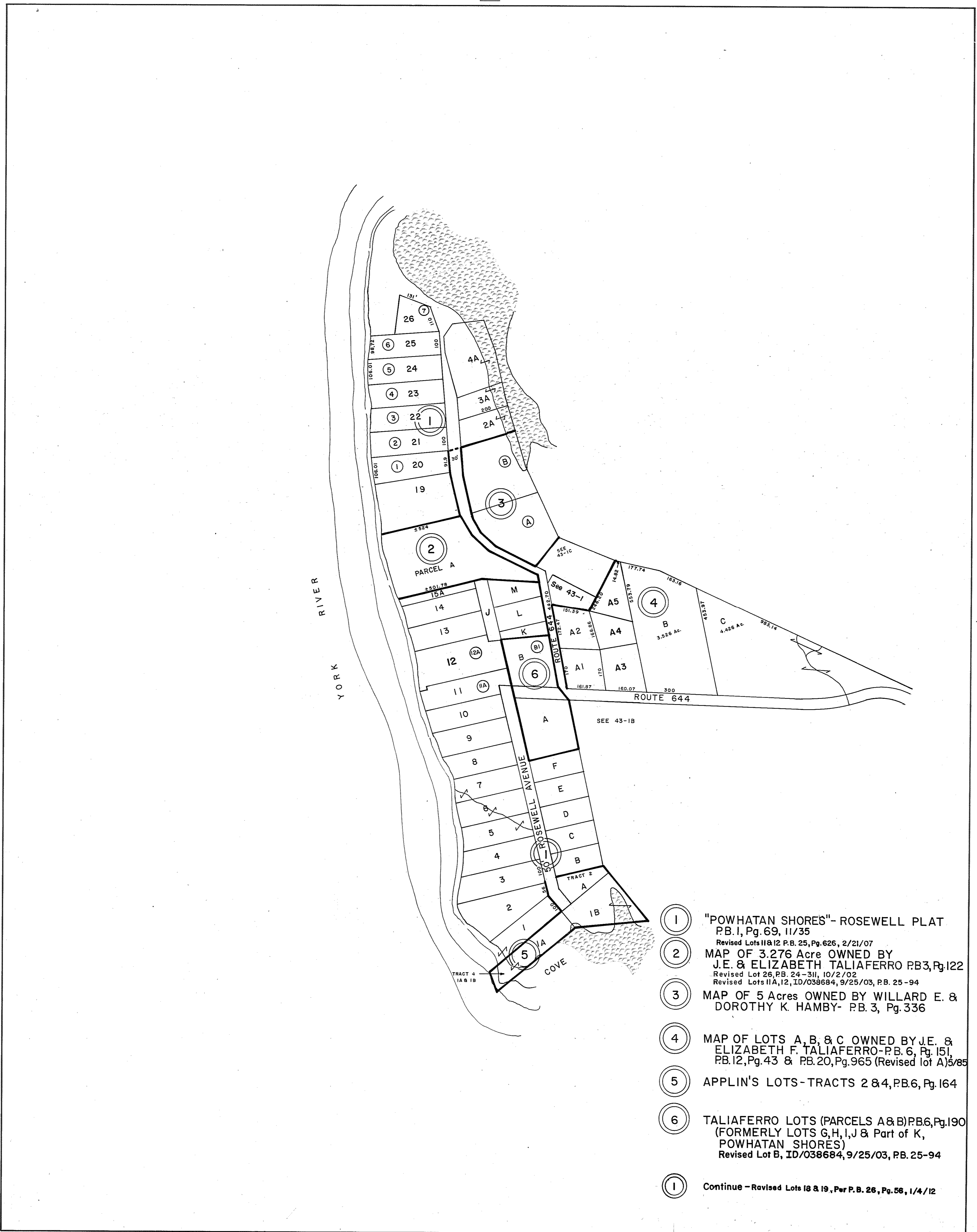
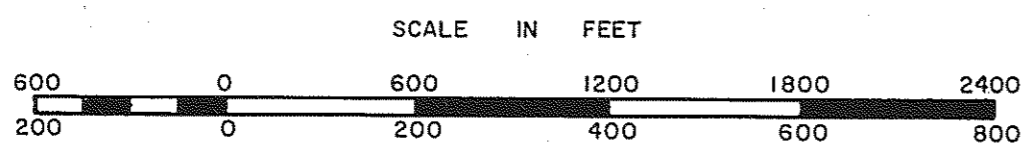


GLOUCESTER COUNTY



- ① "POWHATAN SHORES"- ROSEWELL PLAT
P.B. 1, Pg. 69, 11/35
Revised Lots 11 & 12 P.B. 25, Pg. 626, 2/21/07
- ② MAP OF 3.276 Acre OWNED BY
J.E. & ELIZABETH TALIAFERRO P.B. 3, Pg. 122
Revised Lot 26, P.B. 24-31, 10/2/02
Revised Lots 11A, 12, ID/038684, 9/25/03, P.B. 25-94
- ③ MAP OF 5 Acres OWNED BY WILLARD E. &
DOROTHY K. HAMBY- P.B. 3, Pg. 336
- ④ MAP OF LOTS A, B, & C OWNED BY J.E. &
ELIZABETH F. TALIAFERRO- P.B. 6, Pg. 151,
P.B. 12, Pg. 43 & P.B. 20, Pg. 965 (Revised lot A) 5/85
- ⑤ APPLIN'S LOTS- TRACTS 2 & 4, P.B. 6, Pg. 164
- ⑥ TALIAFERRO LOTS (PARCELS A & B) P.B. 6, Pg. 190
(FORMERLY LOTS G, H, I, J & Part of K,
POWHATAN SHORES)
Revised Lot B, ID/038684, 9/25/03, P.B. 25-94
- ① Continue - Revised Lots 18 & 19, Per P.B. 26, Pg. 56, 1/4/12



ABINGDON DISTRICT

SECTION
INSERT 43A