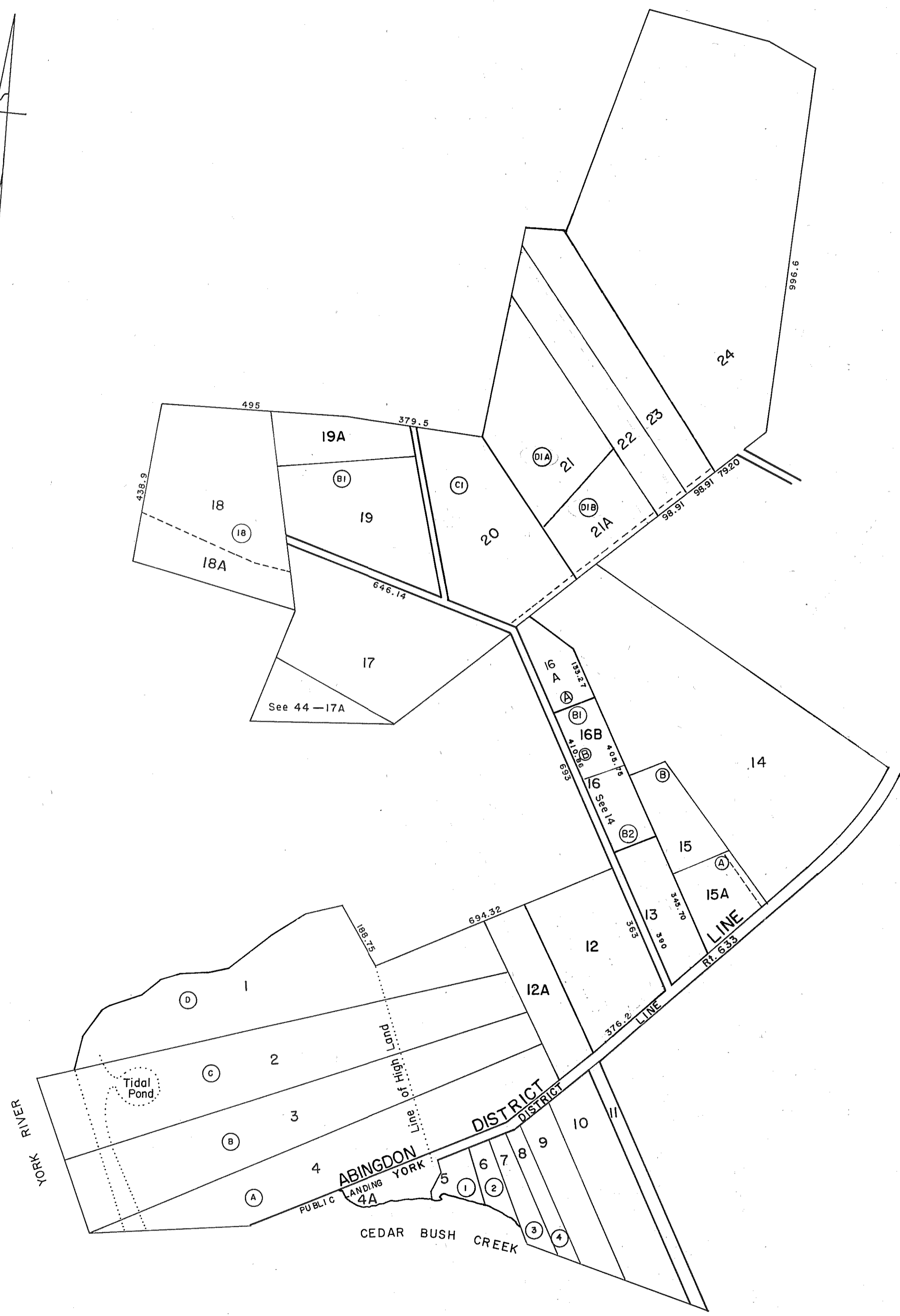


GLOUCESTER COUNTY



PARTITION DEED T.A.J. OLIVER'S, EST. P.B. I, Pg. 224, 12/18/46
 D.B. 51, Pg. 265 P.B. 20, Pg. 1128, 12/85 LOTD Rev.
 8-4-26 LOT B-1 Revised 4/87
 D.B. 68, Pg. 175 D.B. 325, Pg. 445 No Recorded Plat
 11-22-38
 D.B. 214, Pg. 268
 P.B. 13, Pg. 71
 P.B. 20, Pg. 158
 P.B. 20, Pg. 318
 P.B. 20, Pg. 653 6/20/84

REV. 1/63, 3/25/80, 12-31-83/84/85/87/88/89/91/92/10
 REV. 12/75 SCALE IN FEET
 200 0 200 400 600 800

ABINGDON DISTRICT
 & YORK

INSERT 44A