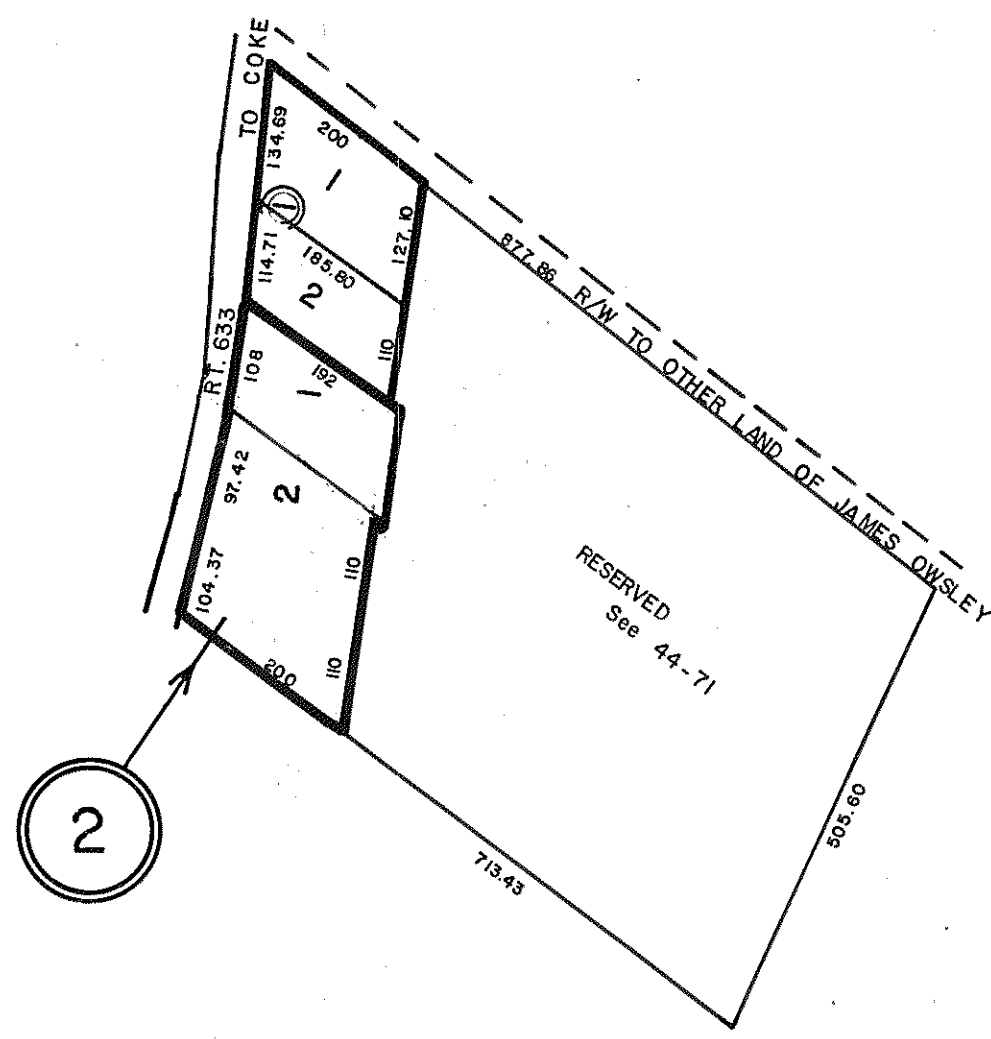


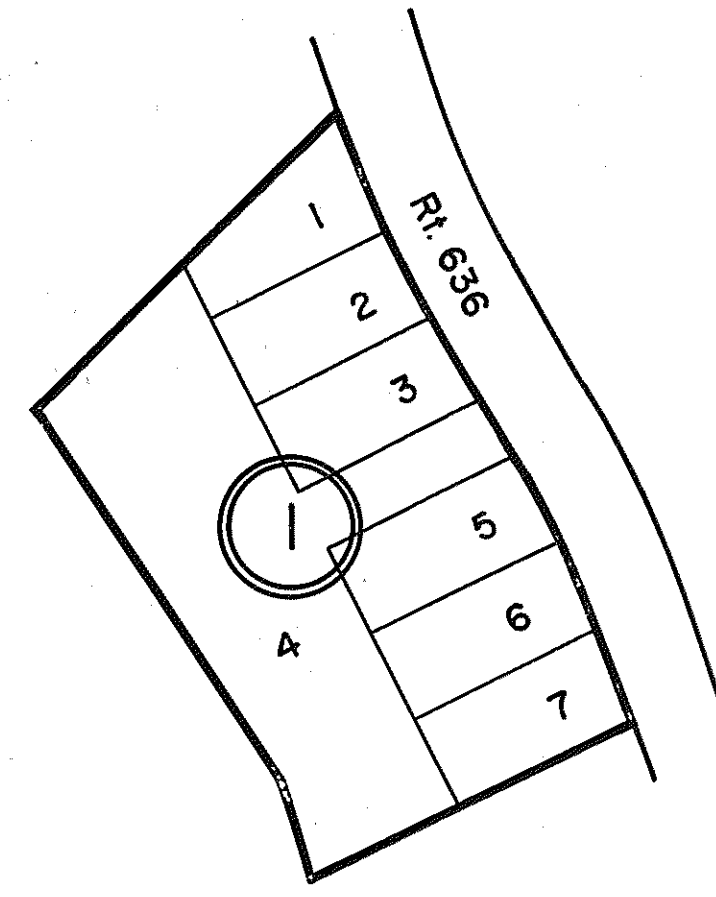
GLOUCESTER COUNTY



- ① LOTS OF JAMES & RACHEL OWSLEY
PLAT D.B. 139-313
- ② REDIVISION OF PLAT - see PB 8-127
PARCELS - 1&2

YORK DISTRICT

INSERT 44B

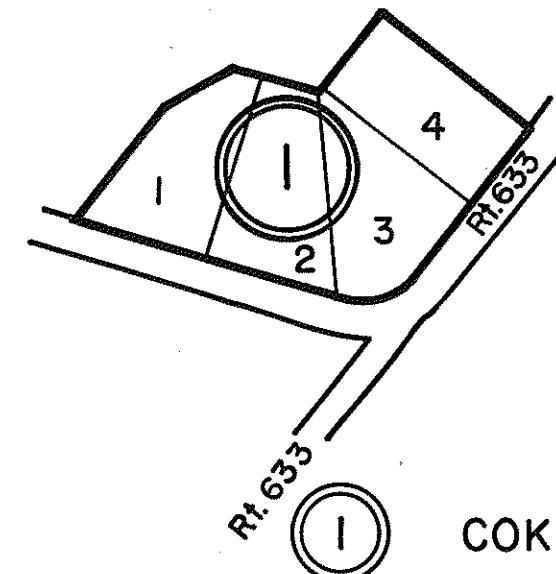


- ① COKE ACRES LOTS 1-7, P.B. 14 - Pg. 39

REV. 3/25/80

YORK DISTRICT

INSERT 44D

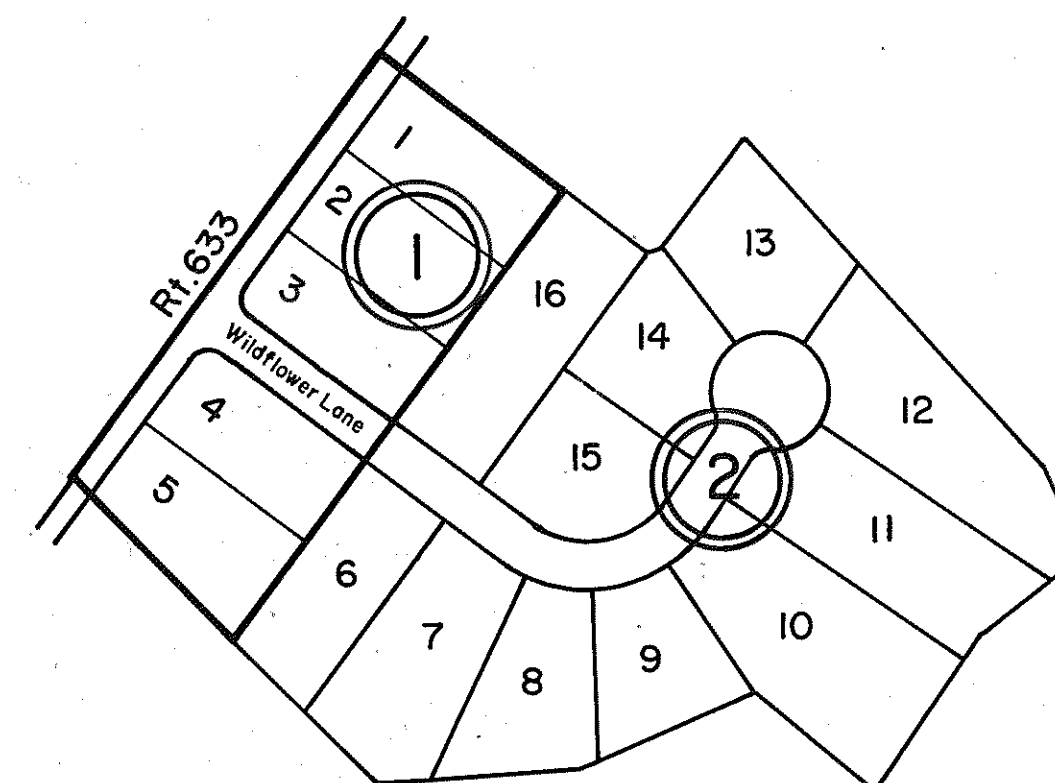


- ① COKE LOTS - LOTS 1-4 - P.B. 13, Pg. 10

REV. 3/25/80

ABINGDON DISTRICT

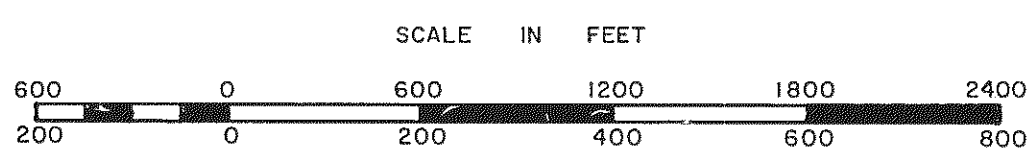
INSERT 44C



- ① WHISPERING WINDS - P.B. 20, Pg. 481
- ② WHISPERING WINDS -
LOTS 6-16 P.B. 21, Pg. 157, 8/86

YORK DISTRICT

INSERT 44E



ABINGDON &
YORK

DISTRICT

SECTION
INSERT 44B,C,D,E