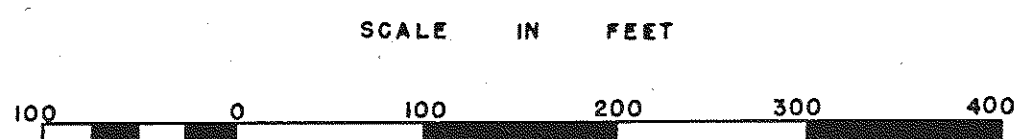
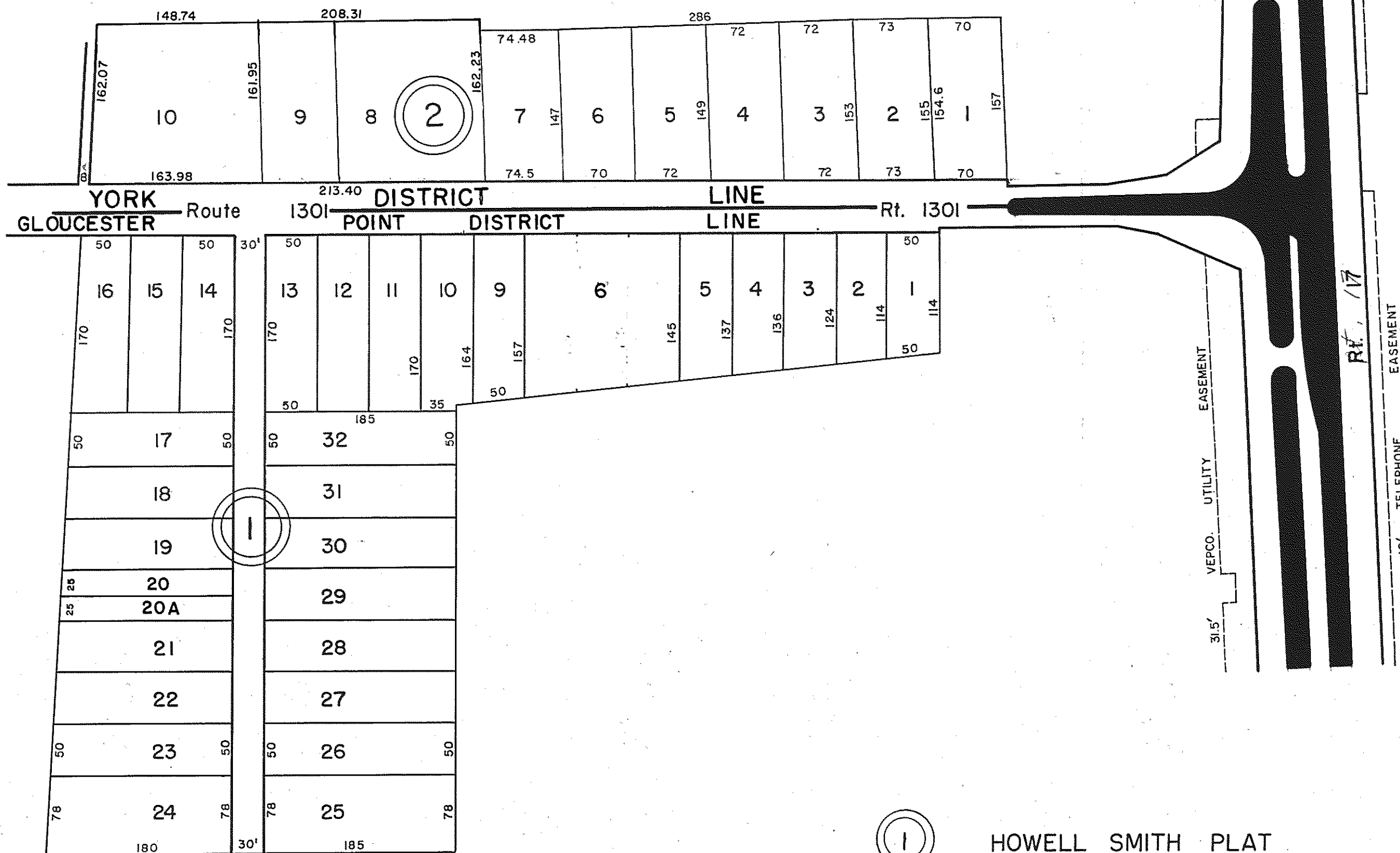


GLOUCESTER COUNTY

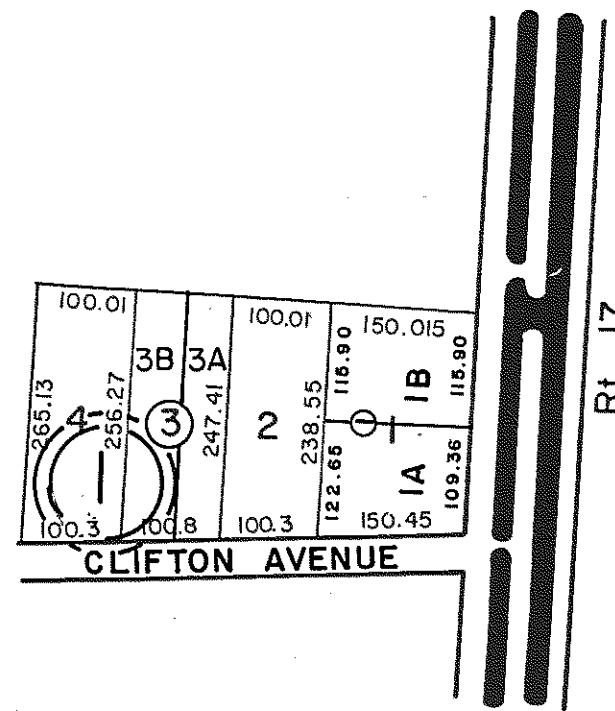


① HOWELL SMITH PLAT  
 P.D.B. 90, Pg. 66 7/2/48  
 LOTS 20A & 21, P.B. 5, Pg. 102  
 Revised Lots 6, 7 & 8, Per P.B. 26, Pg. 202, 8/31/12

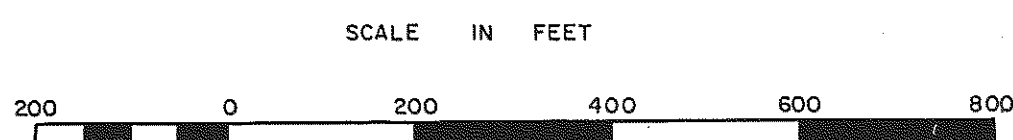
② MARY JONES SUB.  
 REVISED LOTS 8, 9 & 10, DB 247-392  
 P.B. 19, Pg. 114 3/3/82

INSERT 45A

YORK & GLOUCESTER POINT DISTRICT



① CLIFFTON HEIGHTS D.B. 117, Pg. 136  
 Section A  
 LOT 1- DIVIDED DB 150-399  
 LOT 3- DIVIDED DB 233-481



INSERT 45B

YORK DISTRICT  
 REV. 1/63, 12/31/83/84/88/91/92/12  
 REV. 12/75 SCALE IN FEET



YORK & GLOUCESTER POINT DISTRICT