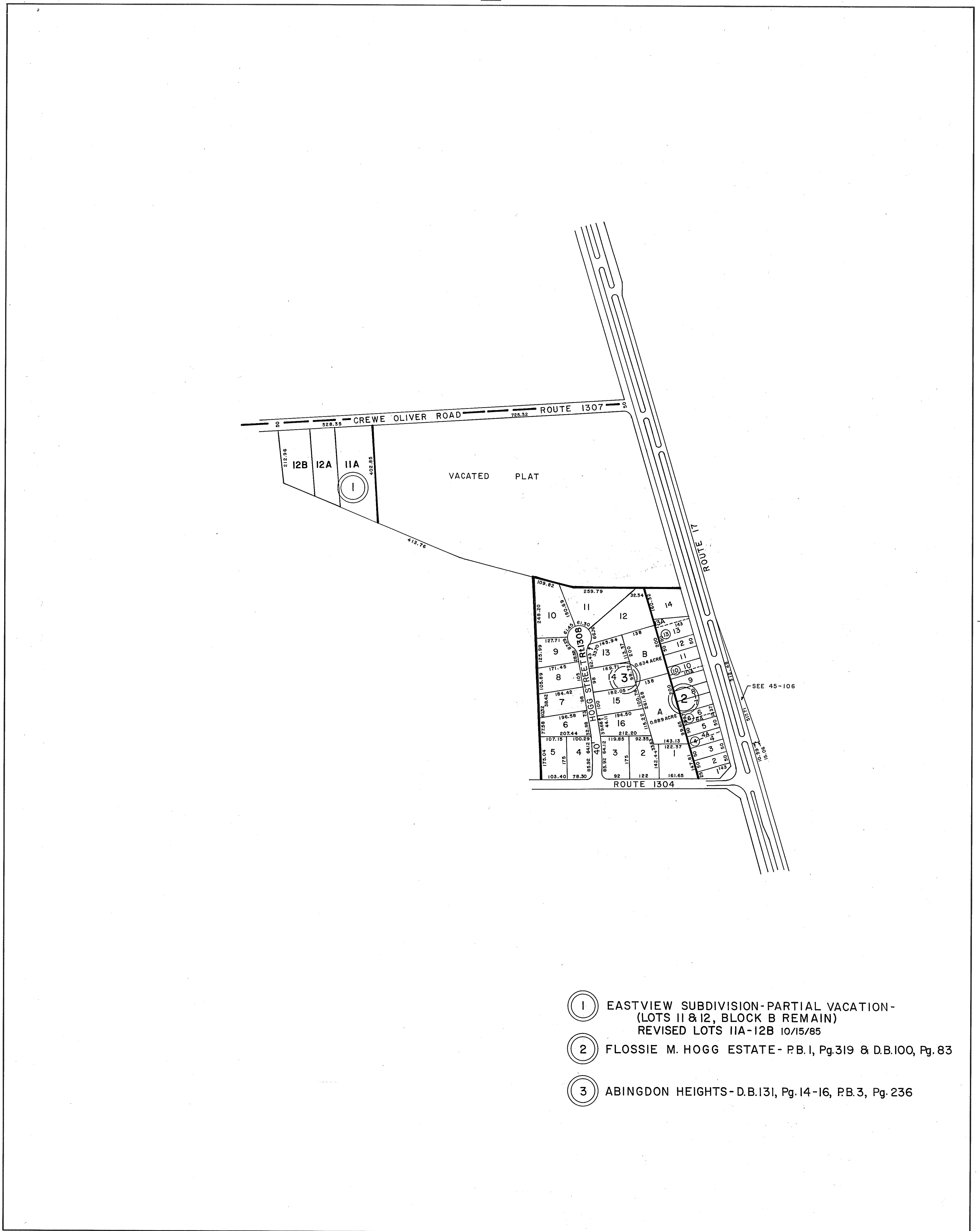
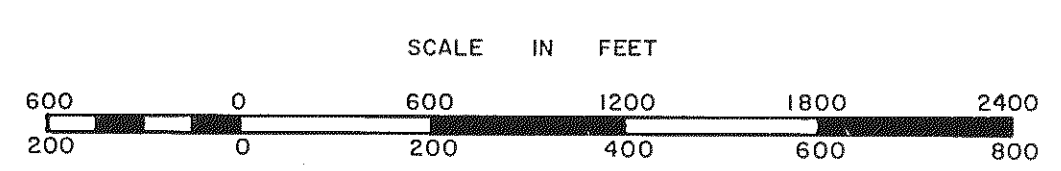


# GLOUCESTER COUNTY



- ① EASTVIEW SUBDIVISION-PARTIAL VACATION-  
(LOTS 11 & 12, BLOCK B REMAIN)  
REVISED LOTS 11A-12B 10/15/85
- ② FLOSSIE M. HOGG ESTATE- P.B.1, Pg.319 & D.B.100, Pg. 83
- ③ ABINGDON HEIGHTS-D.B.131, Pg.14-16, P.B.3, Pg. 236



GLOUCESTER POINT DISTRICT

SECTION  
INSERT **45E**