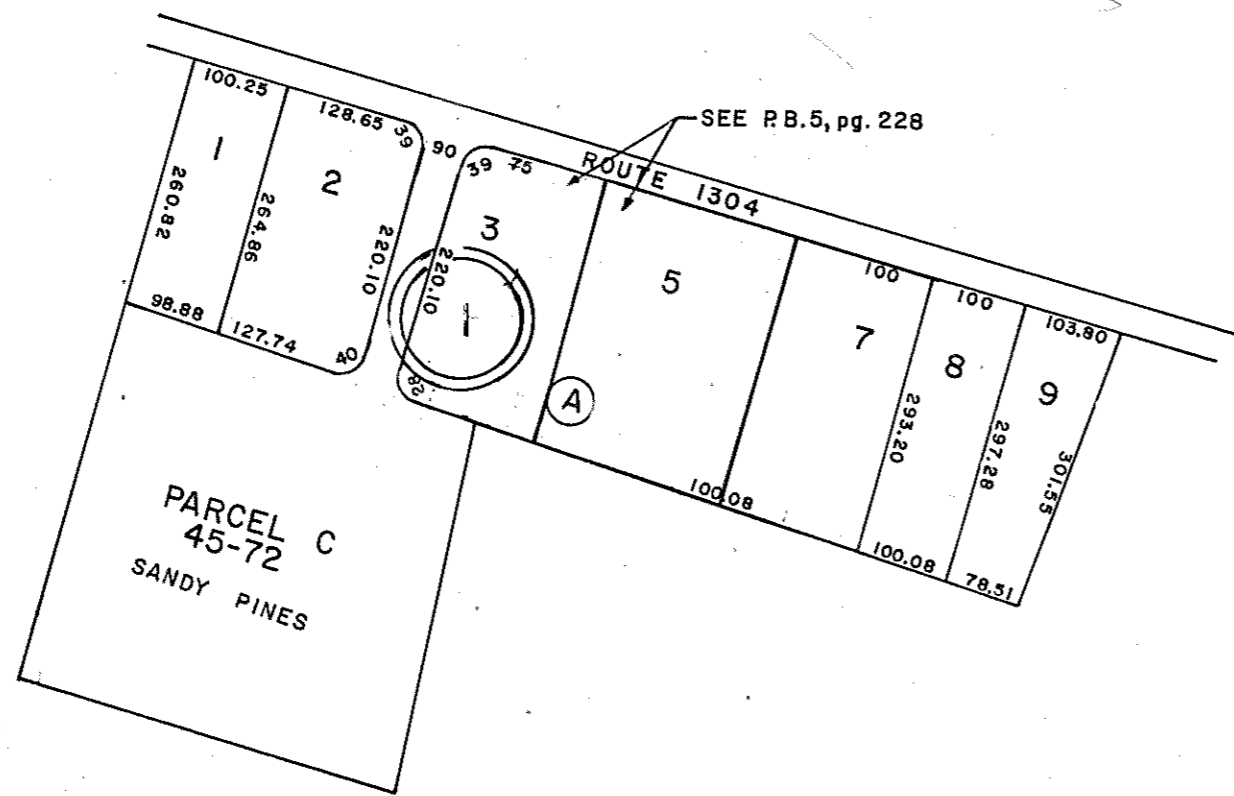


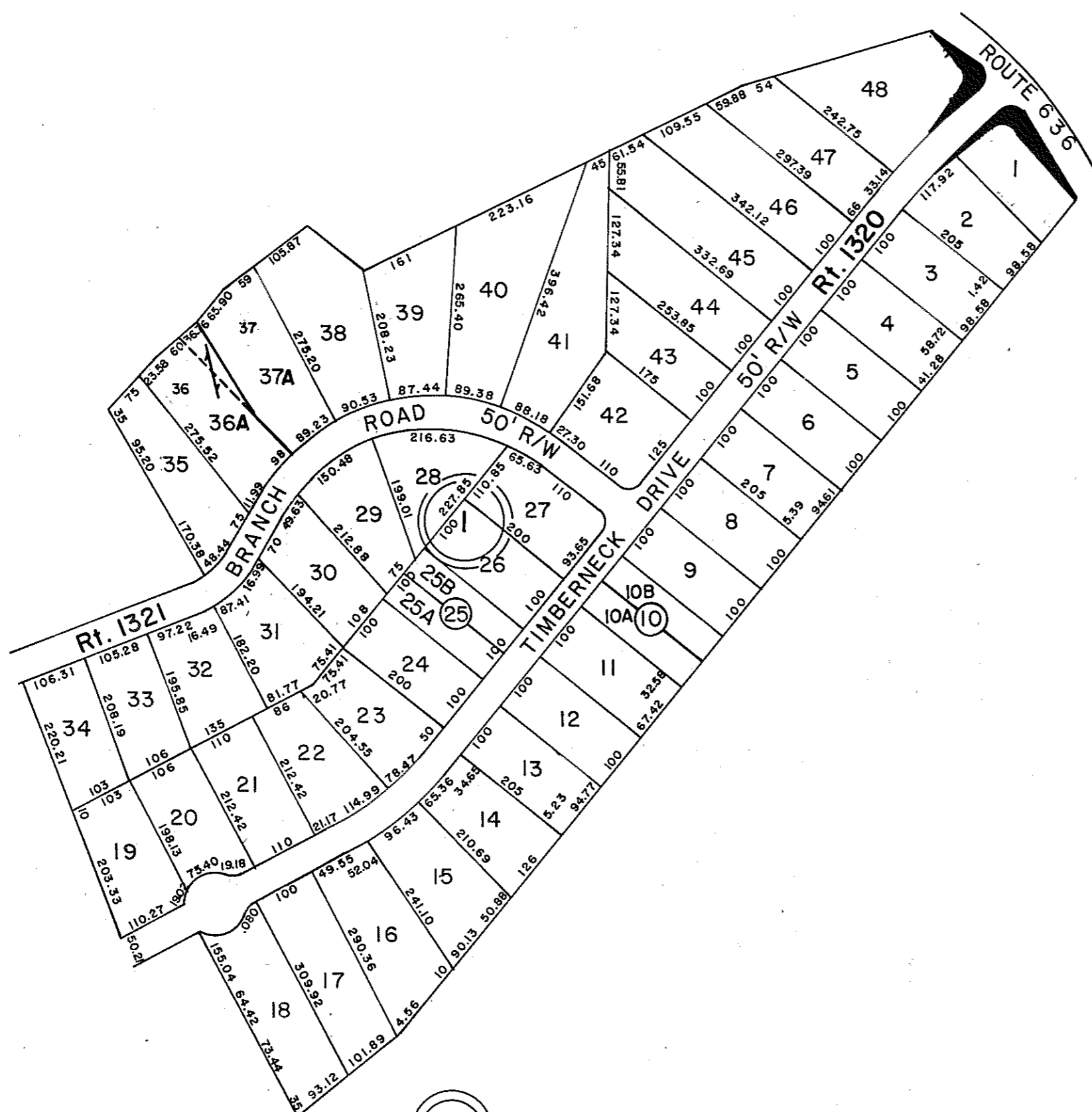
GLOUCESTER COUNTY



① POWHATAN SUBDIVISION -
P.B. 4, Pg. 242 & P.B. 5, Pg. 138
Revised Lot 3, ID/022683, 4/17/02

GLOUCESTER POINT DISTRICT

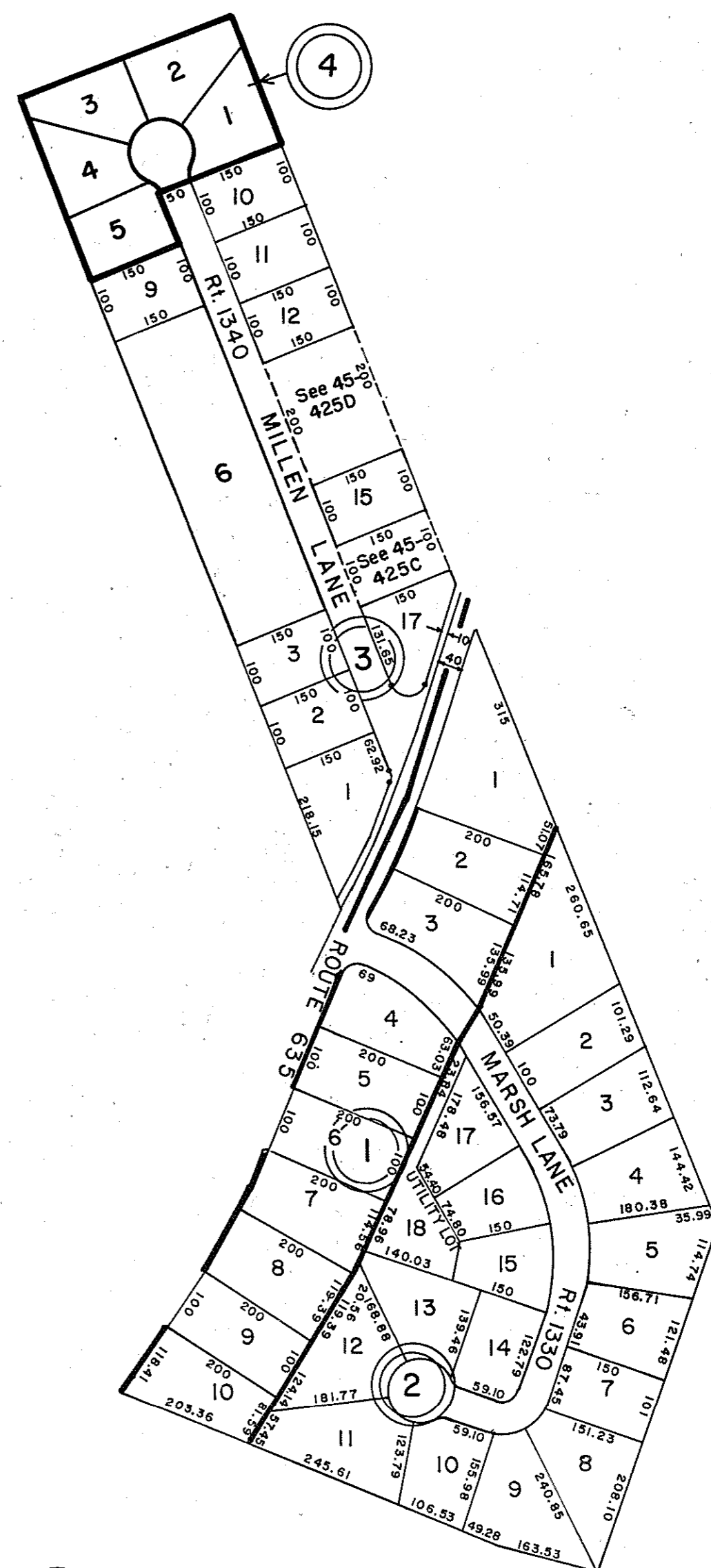
INSERT 45H



① TIMBERNECK ESTATES - P.B. 9, Pg. 14
RESUBDIVISION. LOTS 36 37 DB 206, Pg. 534
P.B. 12, Pg. 90, P.B. 16-64 & P.B. 20-431

REV. 11/9

YORK DISTRICT INSERT 45J

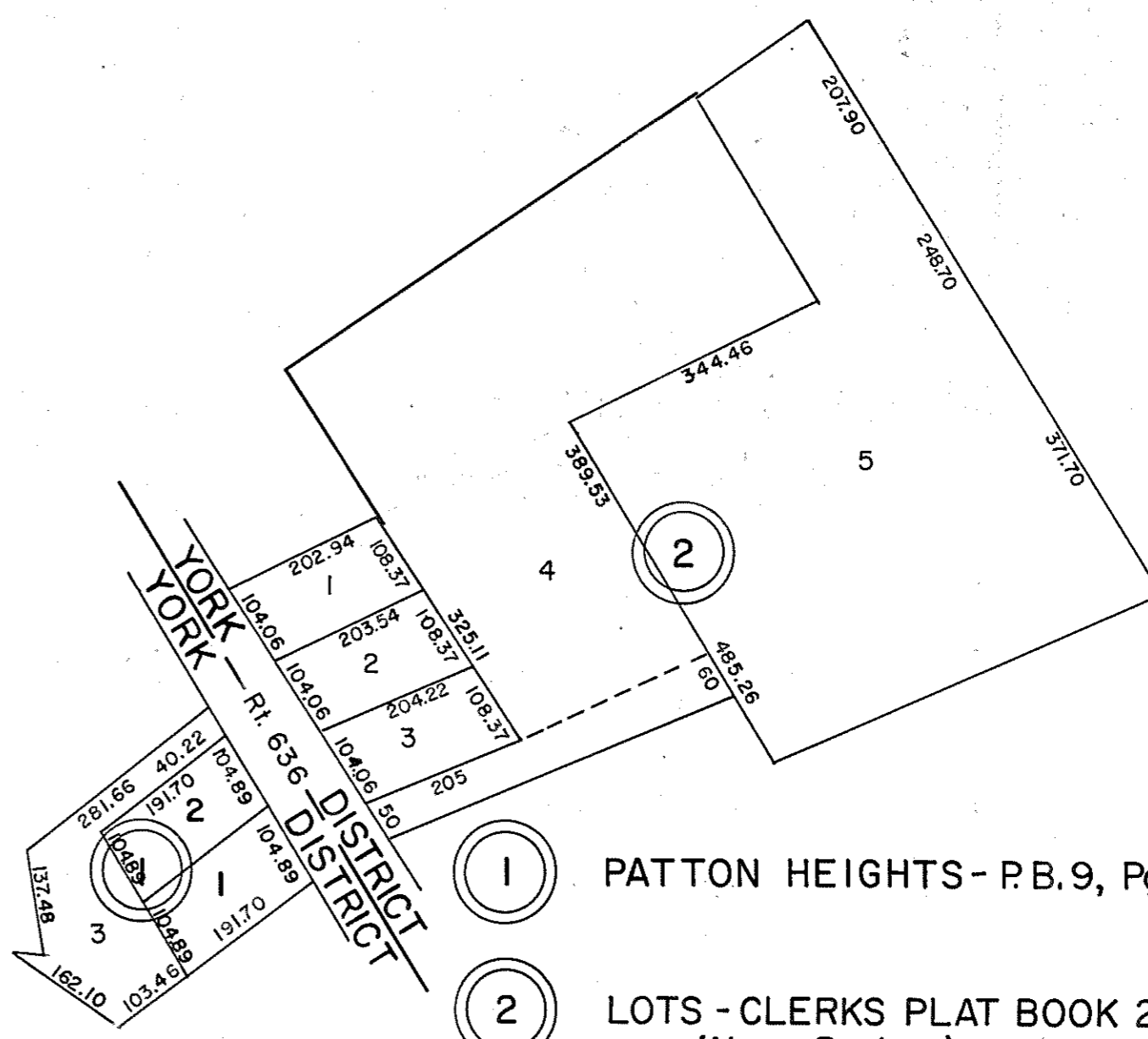


① WHITE MARSH SUBDIVISION
LOTS 1-10, P.B. 8, Pg. 106
② WHITE MARSH SUBDIVISION
SECTION 2, LOTS 1-17 & UTILITY LOT,
P.B. 9, Pg. 11
③ WHITE MARSH SUBDIVISION
SECTION 3, LOTS 1, 2, 3, 6, 9, 10, 11, 12, 15 & 17
P.B. 10, Pg. 87
Revised Lot 6, P.B. 23-553, 4/29/98
Revised Lot 6, 6/23/03 P.B. 25/61
④ WHITE MARSH SUBDIVISION, SECTION 4, LOTS 1-5, P.B. 12-71

REV. 11/79
REV. 12/76

YORK DISTRICT

INSERT 45I

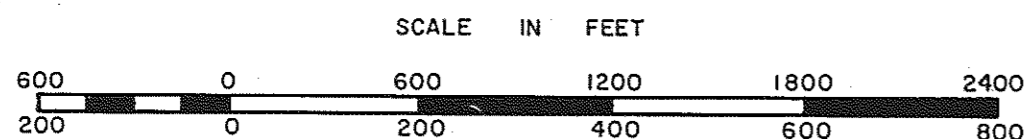


① PATTON HEIGHTS - P.B. 9, Pg. 47
② LOTS - CLERKS PLAT BOOK 20, Pg. 72
(Near Bridges)

YORK

DISTRICT

INSERT 45K



GLOUCESTER POINT DISTRICT
YORK

SECTION _____
INSERT 45H, I, J, K