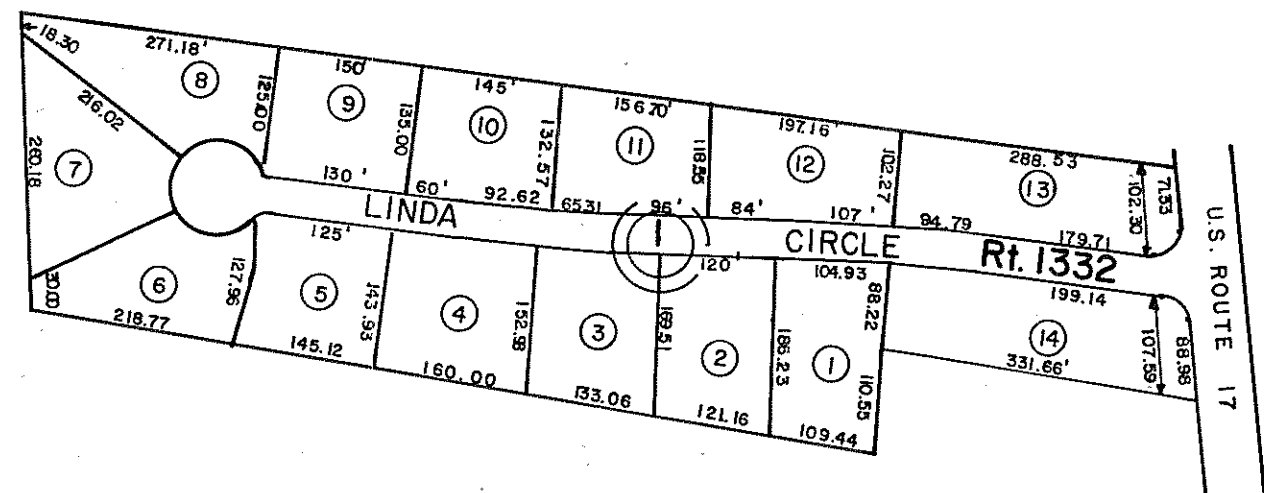


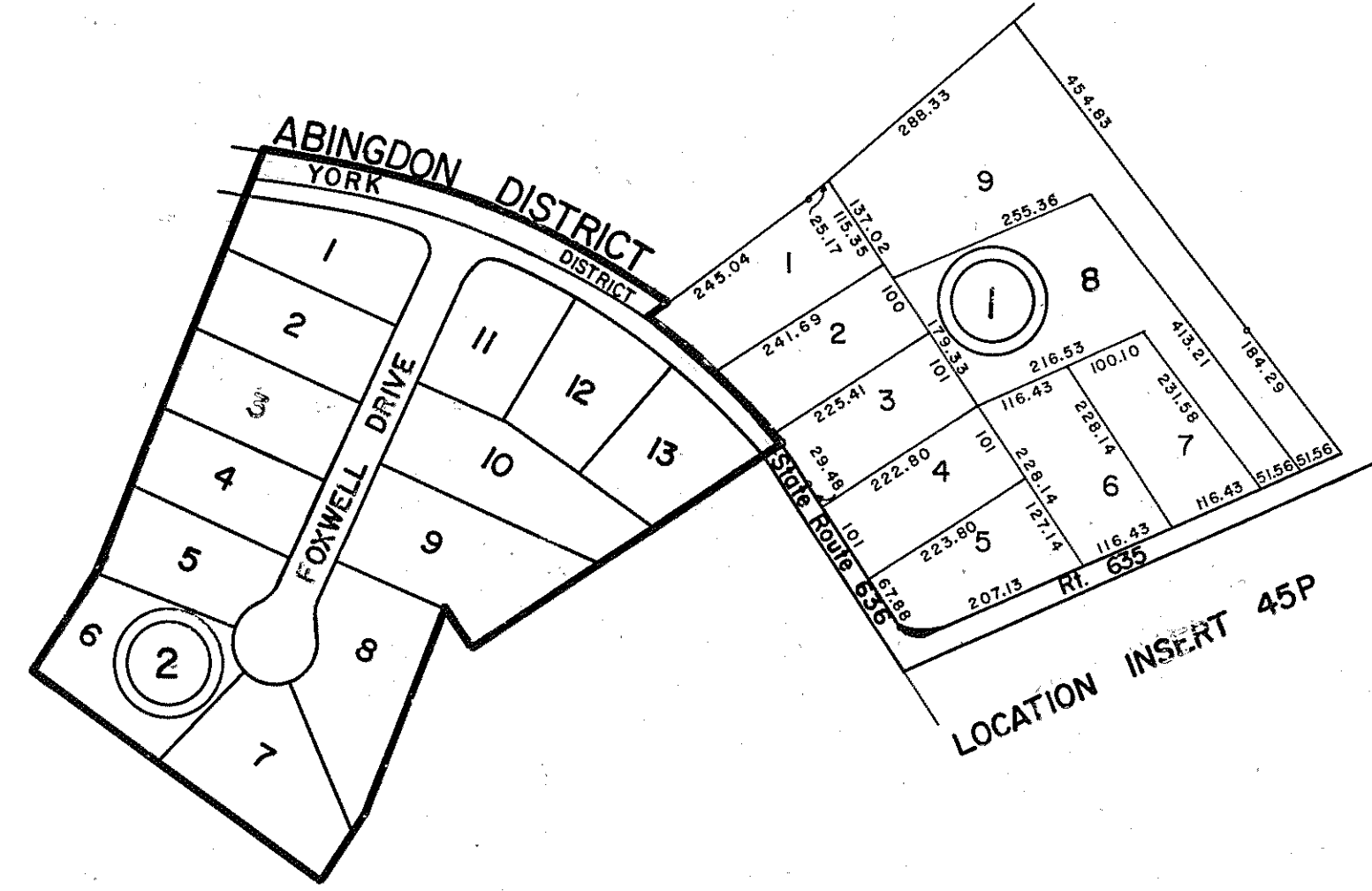
GLOUCESTER COUNTY



① LINDA COURT
PB 10 PG. 11
LOT 5 Revised
PLAT D.B. 195-424
10-20-76

YORK DISTRICT

INSERT 45L

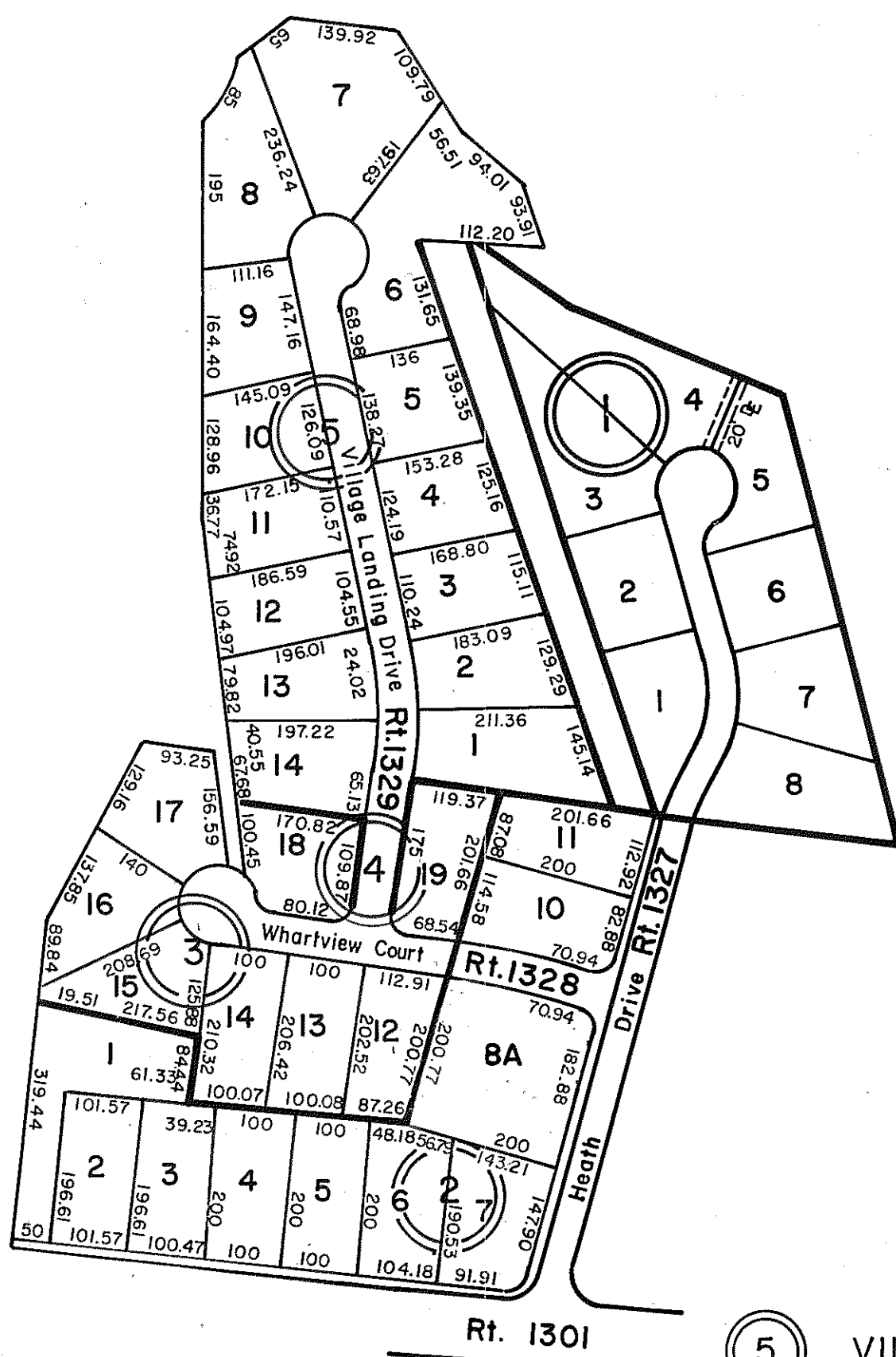


① FOXWELL ESTATES
PB 10 Pg. 42
LOTS 1-9

② FOXWELL ESTATES
SECTION 2, P.B. 13-8
LOTS 1-13

YORK DISTRICT

INSERT 45M



⑤ VILLAGE LANDING
P.B. 20-204, LOTS 1-14

④ WHARF VIEW, LOTS 18 & 19, P.B. 19-59

③ WHARF VIEW, LOTS 12-17, P.B. 19-16

① CROSWELL HEATH SUBDIVISION - P.B. 14, Pg. 119 - LOTS 1-8

② WHARF VIEW, SEC. ONE - P.B. 18-52, LOTS 1-8A, 10, 11
LOTS 8 & 9 - Revised PLAT D.B. 486-651-10-13-94

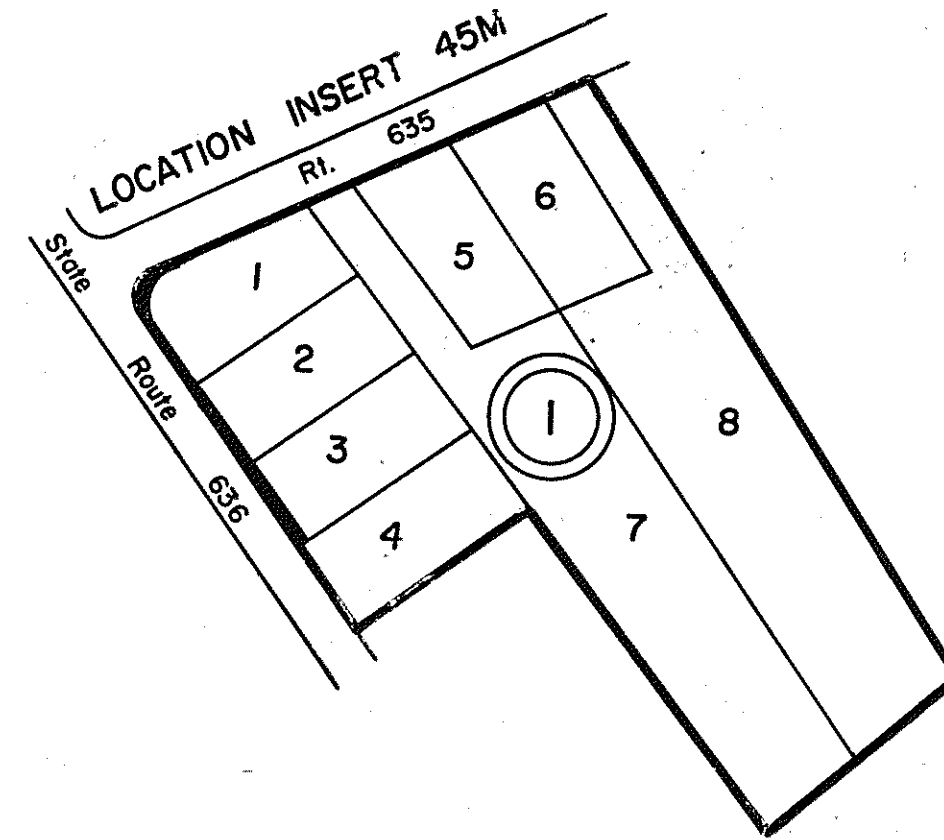
REV. 3/25/80

YORK DISTRICT

INSERT 45Q

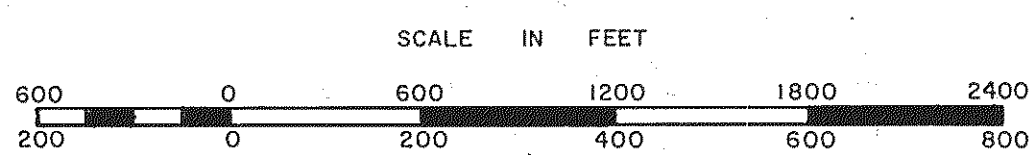
REV. 11/79

YORK DISTRICT



① MILLVILLE ESTATES
P.B. 14-17 LOTS 1-8

INSERT 45P



YORK DISTRICT

SECTION
INSERT 45L, M, P, Q