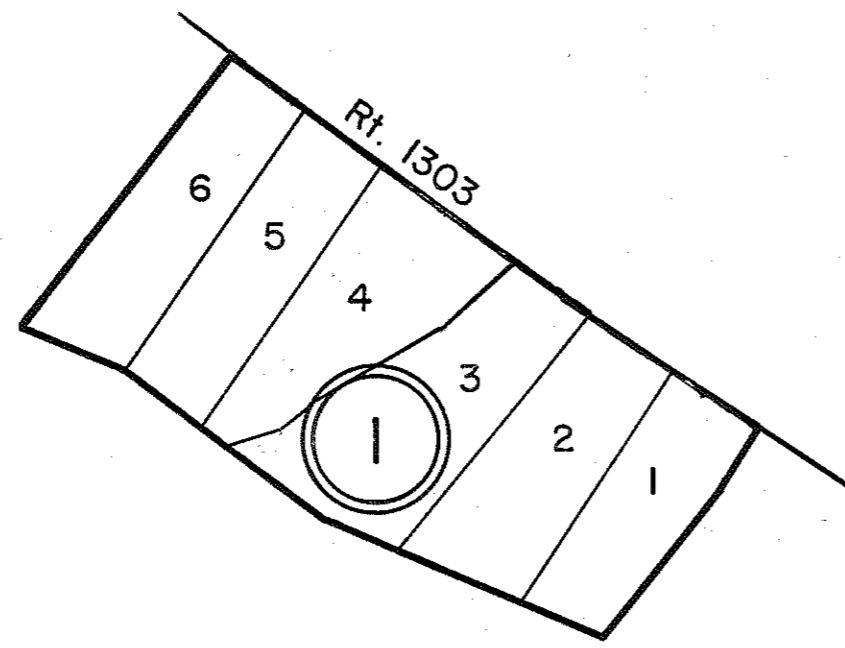
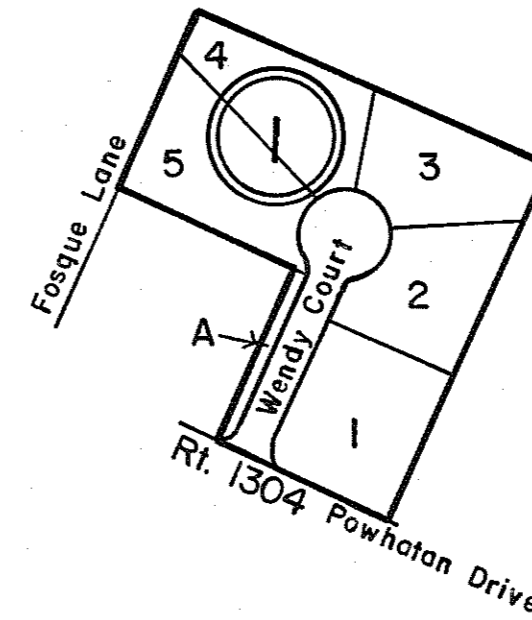


GLOUCESTER COUNTY



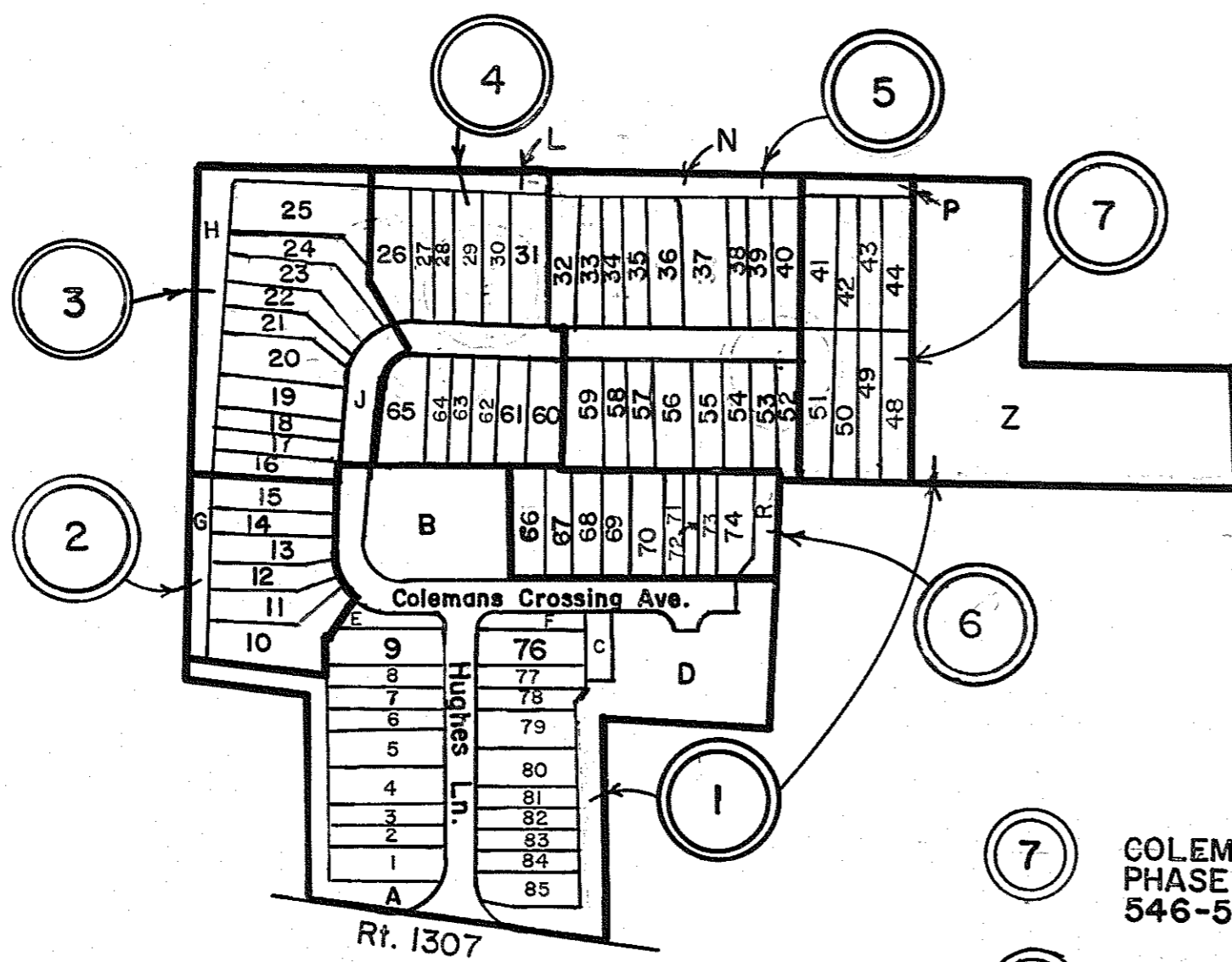
① THE LANDING - P.B. 23, Pg. 106
OUT LOT 1, LOTS 2-6 4/17/96



① POCAHONTAS MEADOWS
PB.23, Pg. 382 8/15/97
LOTS 1-5, PARCEL A

INSERT 45X

INSERT 45Y



① COLEMANS CROSSING - P.B. 26, Pg. 12-12D
PHASE 1, 6/10/11
REVISED LOTS 76-85, P.B. 26, Pg. 389, 11/13/14

② COLEMANS CROSSING - P.B. 26, Pg. 89, 89A
PHASE 2, 6/28/12

③ COLEMANS CROSSING - P.B. 26, Pg. 164, 164-A-B
PHASE 3, 6/11/12

⑦ COLEMANS CROSSING
PHASE 7, P.B. 26, Pg.
546-546A, 9/29/16

⑥ COLEMANS CROSSING
PHASE 6, P.B. 26, Pg.
491-491A, 2/12/16

④ COLEMANS CROSSING
PHASE 4, P.B. 2, Pg. 289,
289A, 8/9/13

⑤ COLEMANS CROSSING
PHASE 5, P.B. 26, Pg. 376,
376A, 9/29/14

INSERT 45Z



GLOUCESTER POINT

DISTRICT

SECTION
INSERT

45X,Y,Z