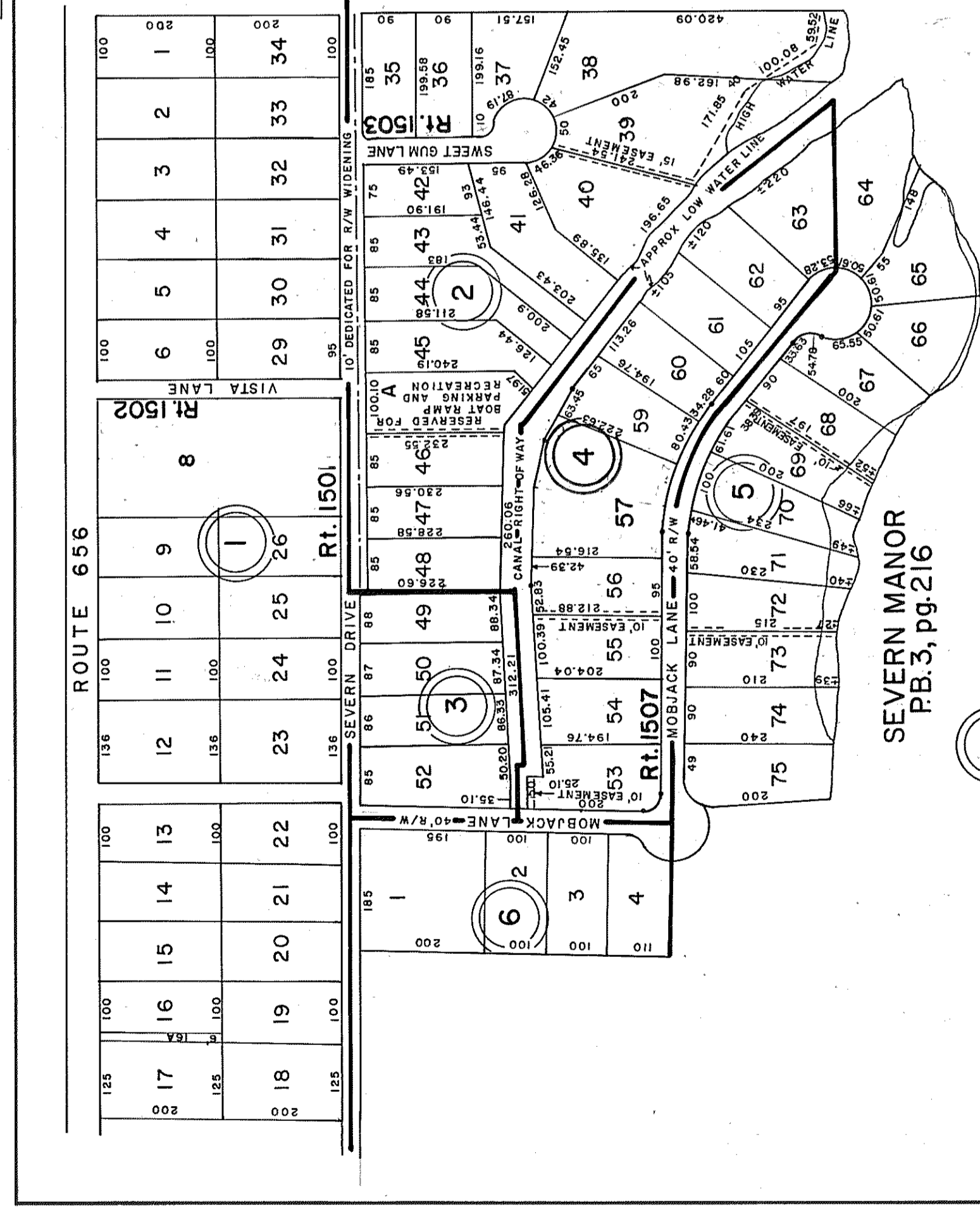


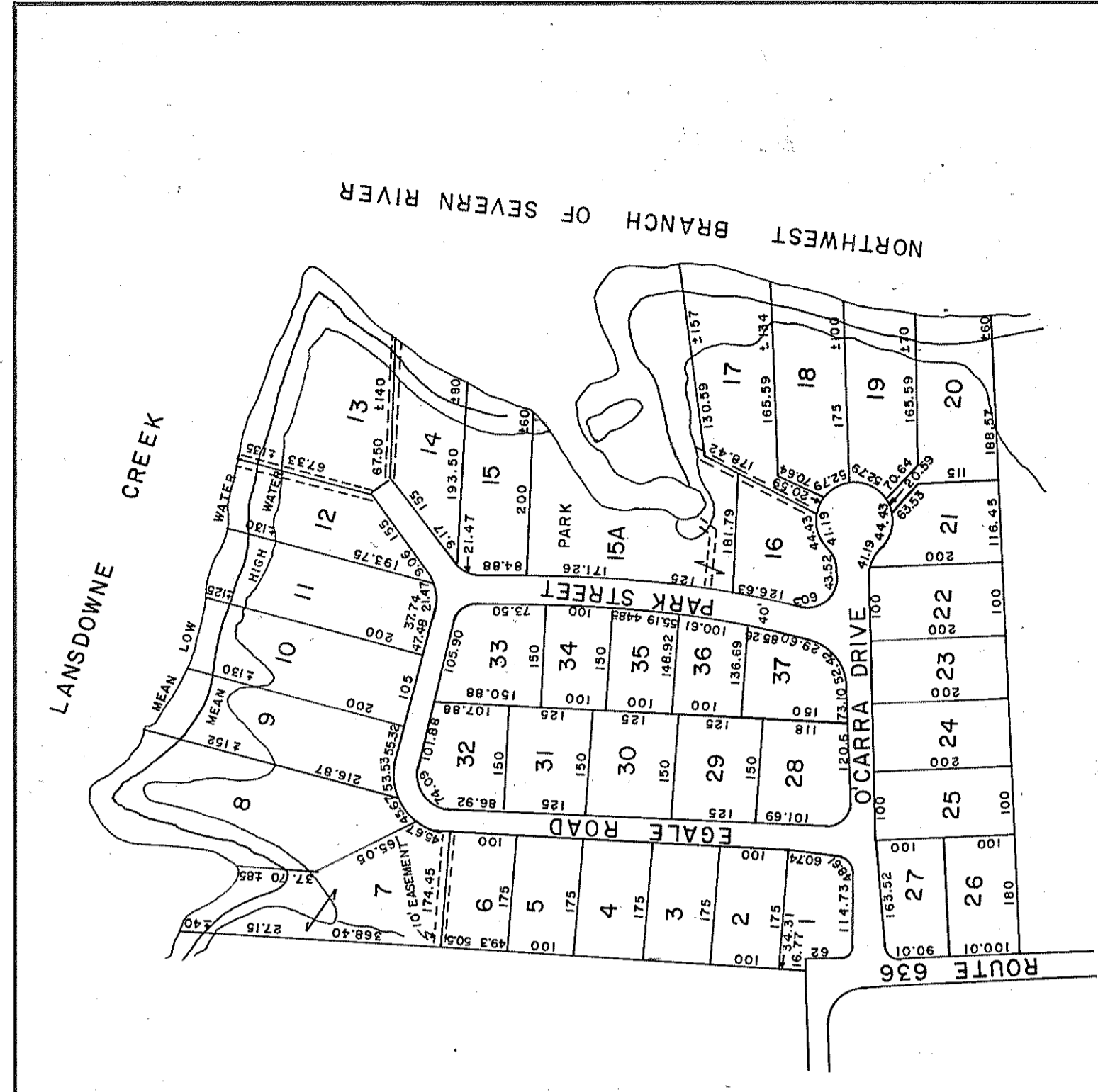
GLoucester COUNTY



- ① SECTION I - LOTS 1-34
- ② SECTION II - LOTS 35-48
- ③ SECTION III - LOTS 49-52, P.B.3, pg.280
- ④ SECTION IV - LOTS 53-63, P.B.3, pg.307
- ⑤ SECTION V - LOTS 64-75, P.B.3, pg.306
- ⑥ SECTION VI - LOTS 1-4, P.B.5, pg.43  
DEDICATION OF ROADS - DB142-515

YORK DISTRICT

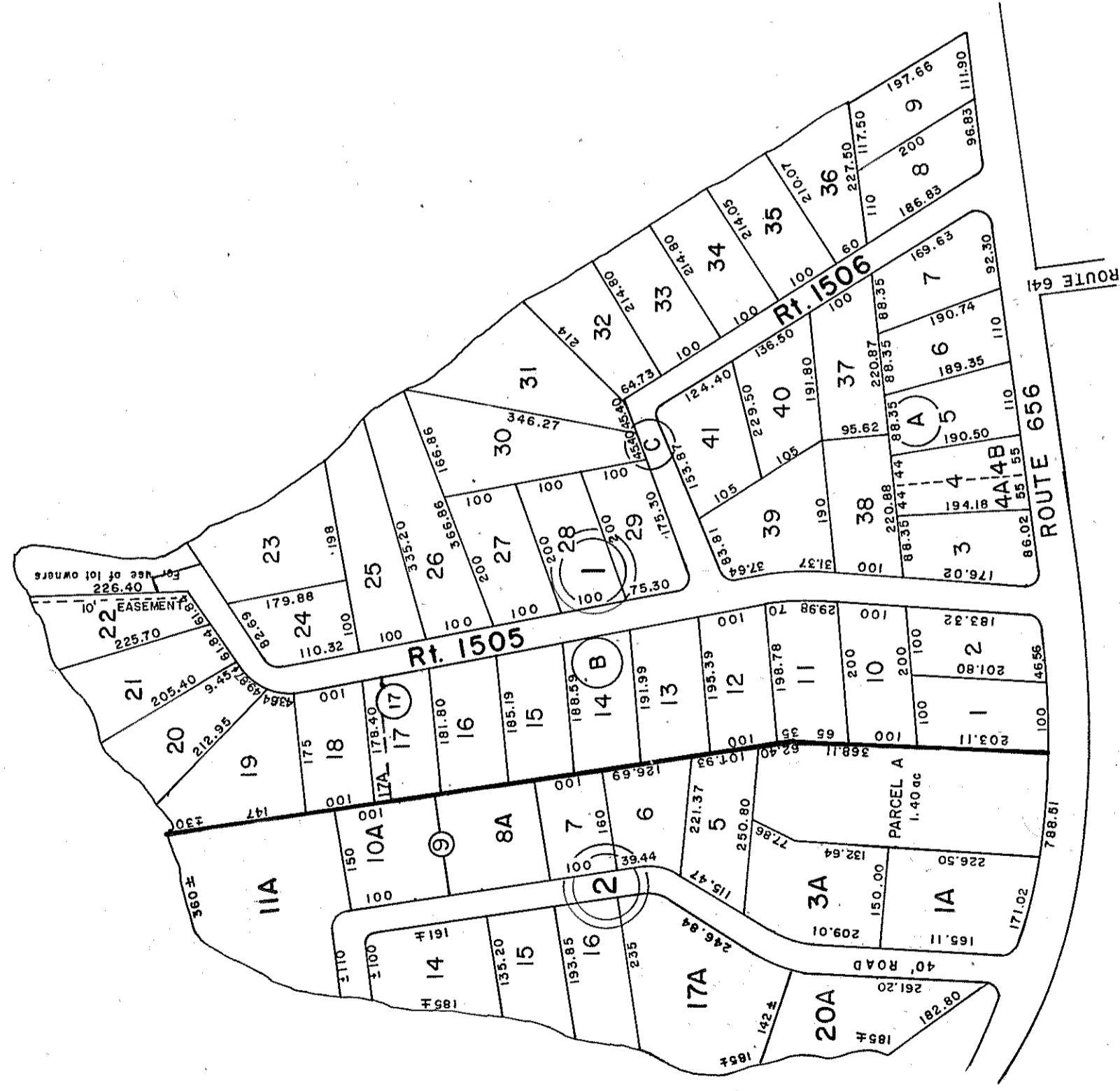
INSERT 46A



- ① BRAYSHORE PARK - P.B.3, Pg.53 9/6/62

ABINGDON DISTRICT

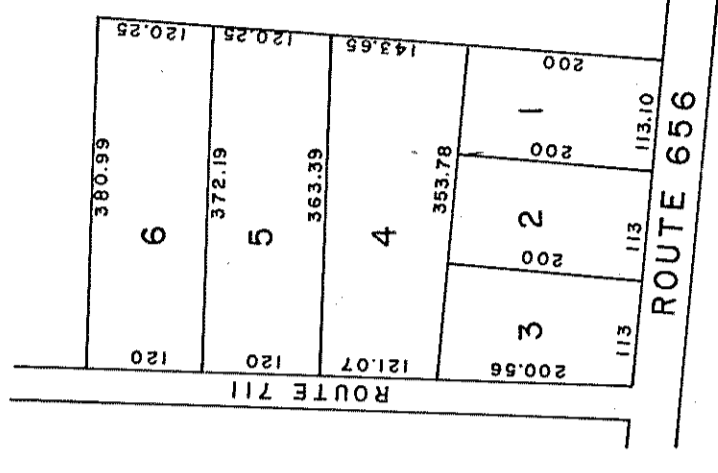
INSERT 46B



- ① VAUGHAN CREEK SUBDIVISION  
P.B.3, Pg.299, LOTS 1-41 8/25/65
- ② QUIET COVE SUBDIVISION  
PARCEL A LOTS 1-21, P.B.3, Pg.316  
LOTS 8,9,10 REV.P.B.2, Pg.1008 10/21/65  
P.B.23-688 12/28/68  
P.B.23-688 12/28/68

YORK DISTRICT

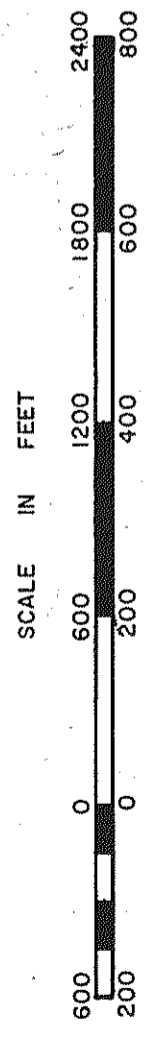
INSERT 46C



- ① WEST SUBDIVISION  
PLAT DB 151-332 11/14/68

YORK DISTRICT

INSERT 46D



REVISED: 12/75, 12/31/83/84/85/88/89/91/92/98/11/14

DISTRICTS

ABINGDON  
& YORK

SECTION  
INSERT 46A,B,C,D