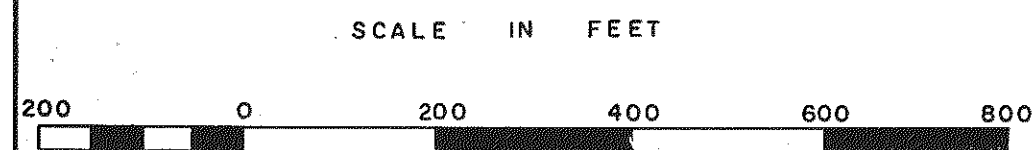
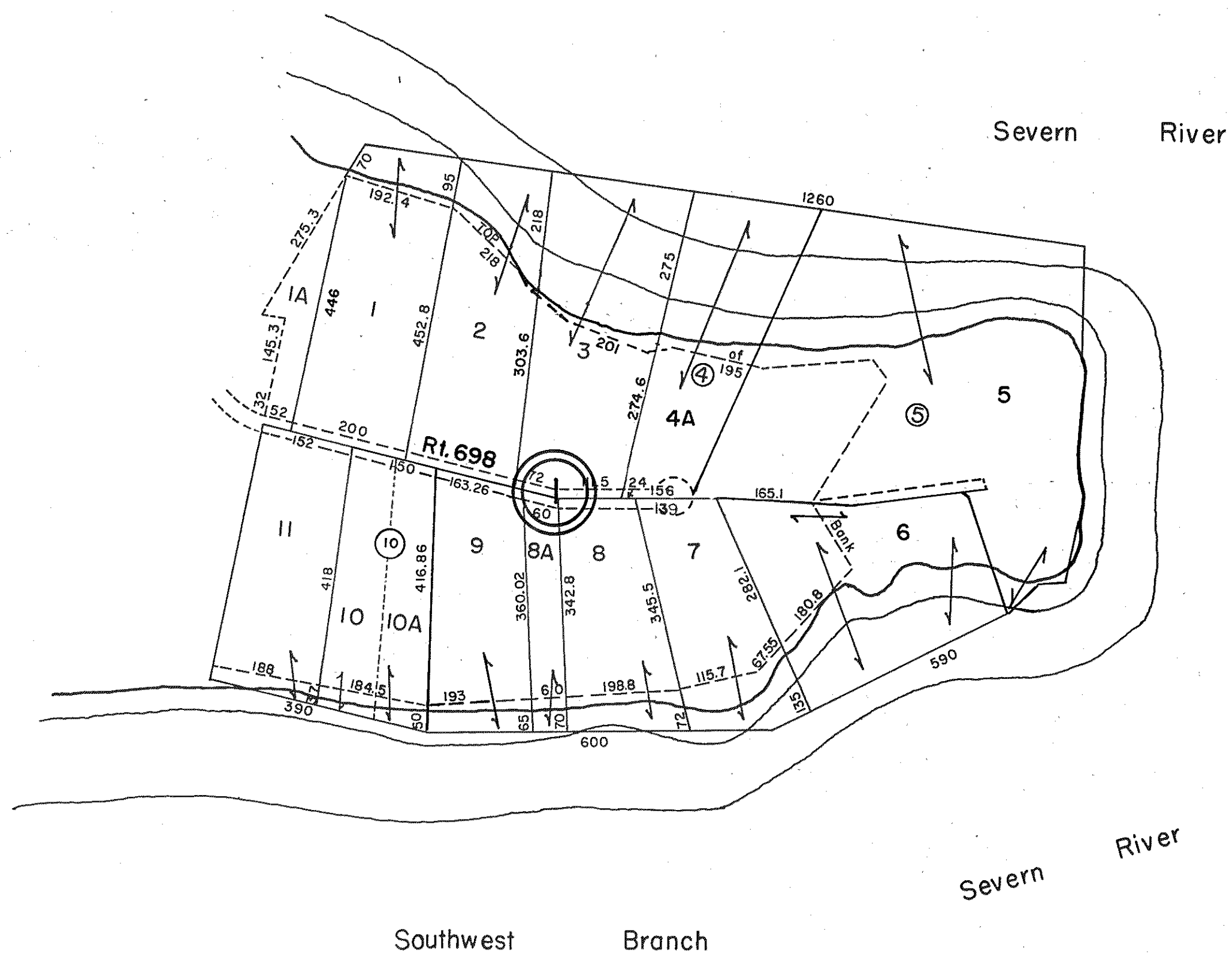
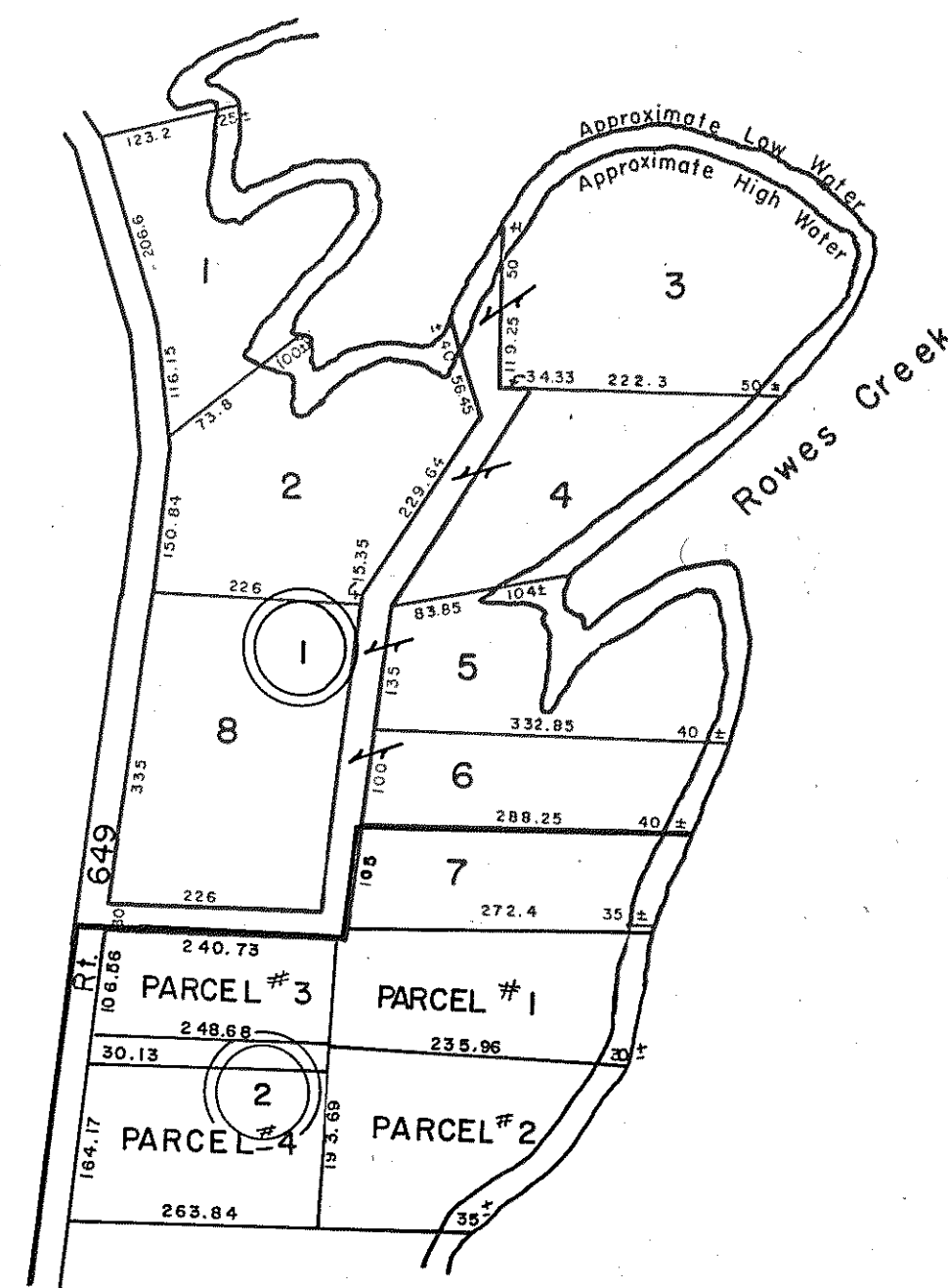


GLOUCESTER COUNTY



① STUMP POINT
 P.B.1, Pg.252, 6/6/49
 LOTS 4,5 & 6 P.B.21, Pg.187 9/25/86
 REVISED LOT 9, P.B.24-174 12/6/01
 Revised Lots 5 & 6, P.B.24/281, 8/1/02
 Revised Lots 1,2 & 3, P.B.25, Pg.958, 4/22/10
INSERT 47A

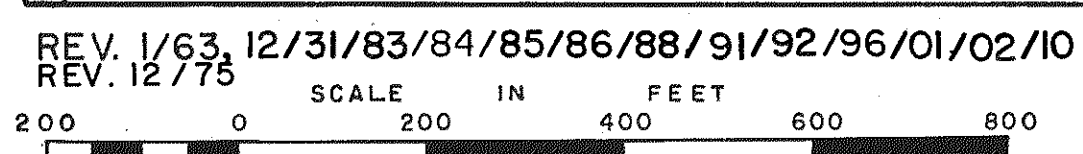
YORK DISTRICT



① WM. L. BALL PROPERTY
 CLERKS BOOK I, Pg. 334 12/18/54
 ② W. L. WILBURN PLAT
 P.B. 3 pg. 90 2/19/63

INSERT 47B

YORK DISTRICT



YORK DISTRICTS

INSERT 47A & 47B