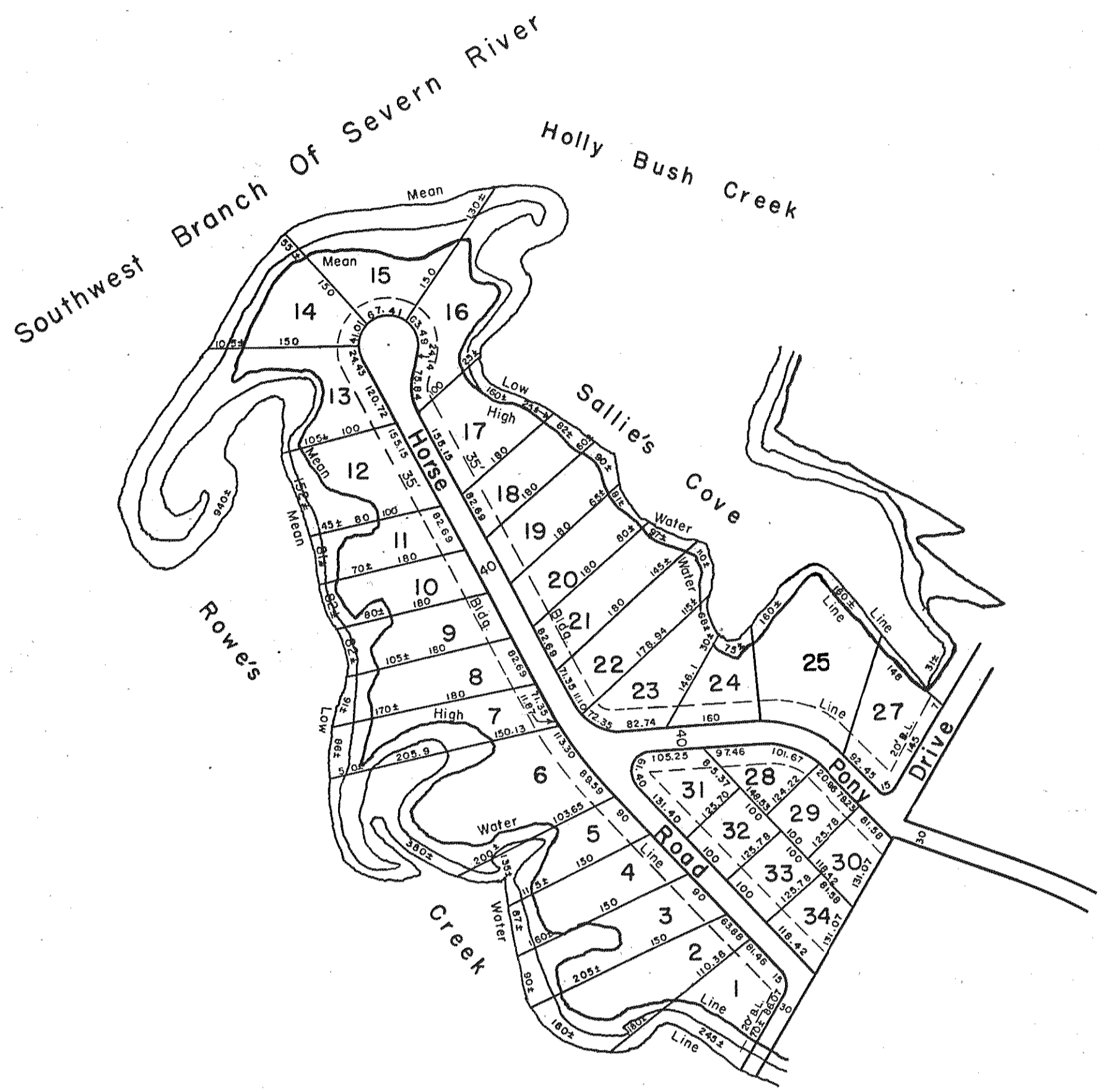


GLOUCESTER COUNTY



1 SEVERN VIEW - P.B. 2, Pg. 370 8/15/61

REV. 1/63; 12/75, 12/31/83/84/89/92/06

VA. STATE DEPT. OF TAXATION, DIVISION OF REAL ESTATE APPRAISAL AND MAPPING



YORK DISTRICT

INSERT 47E