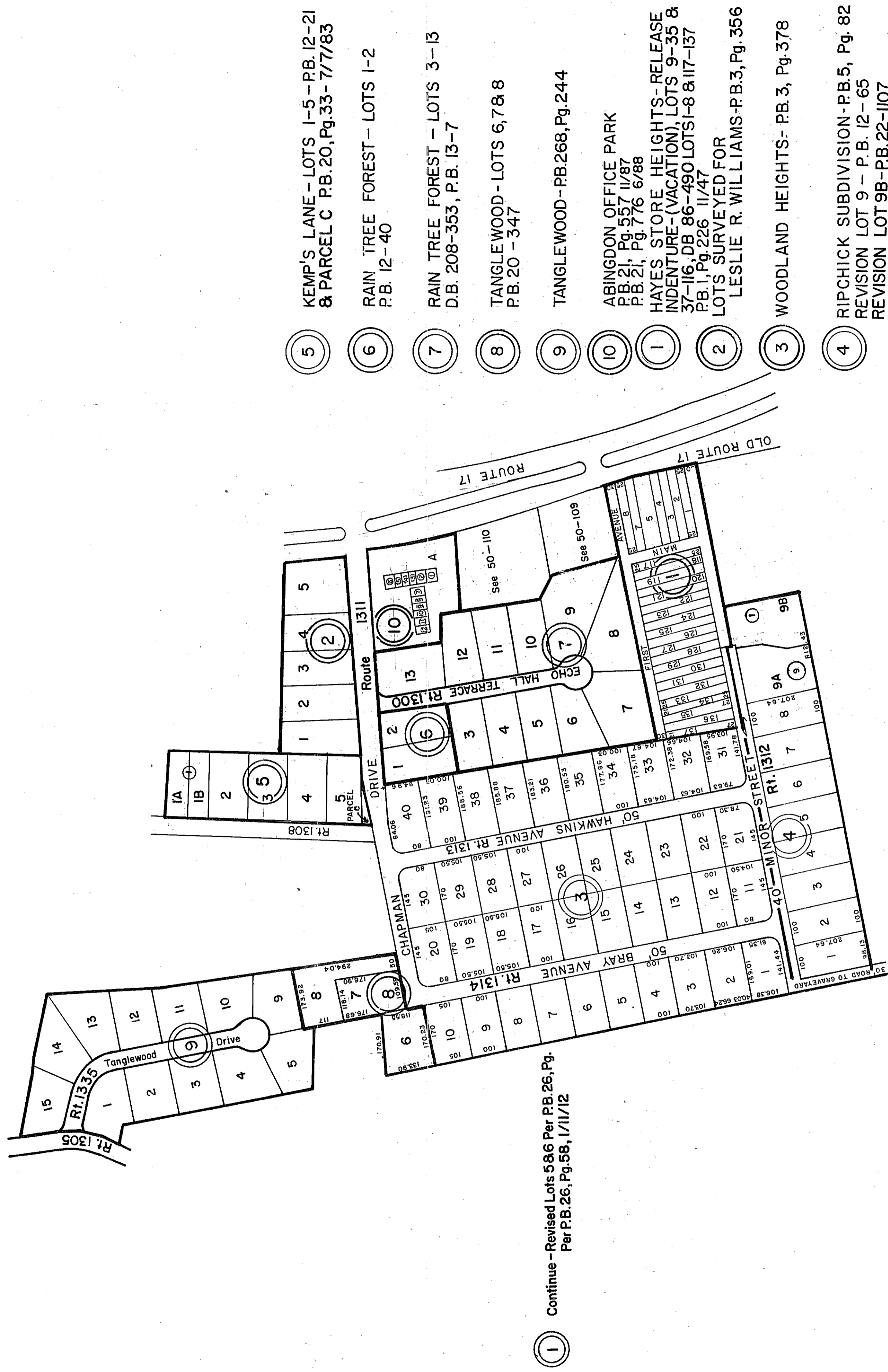
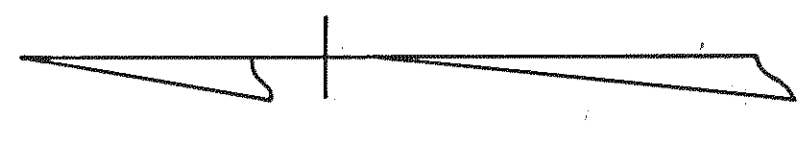


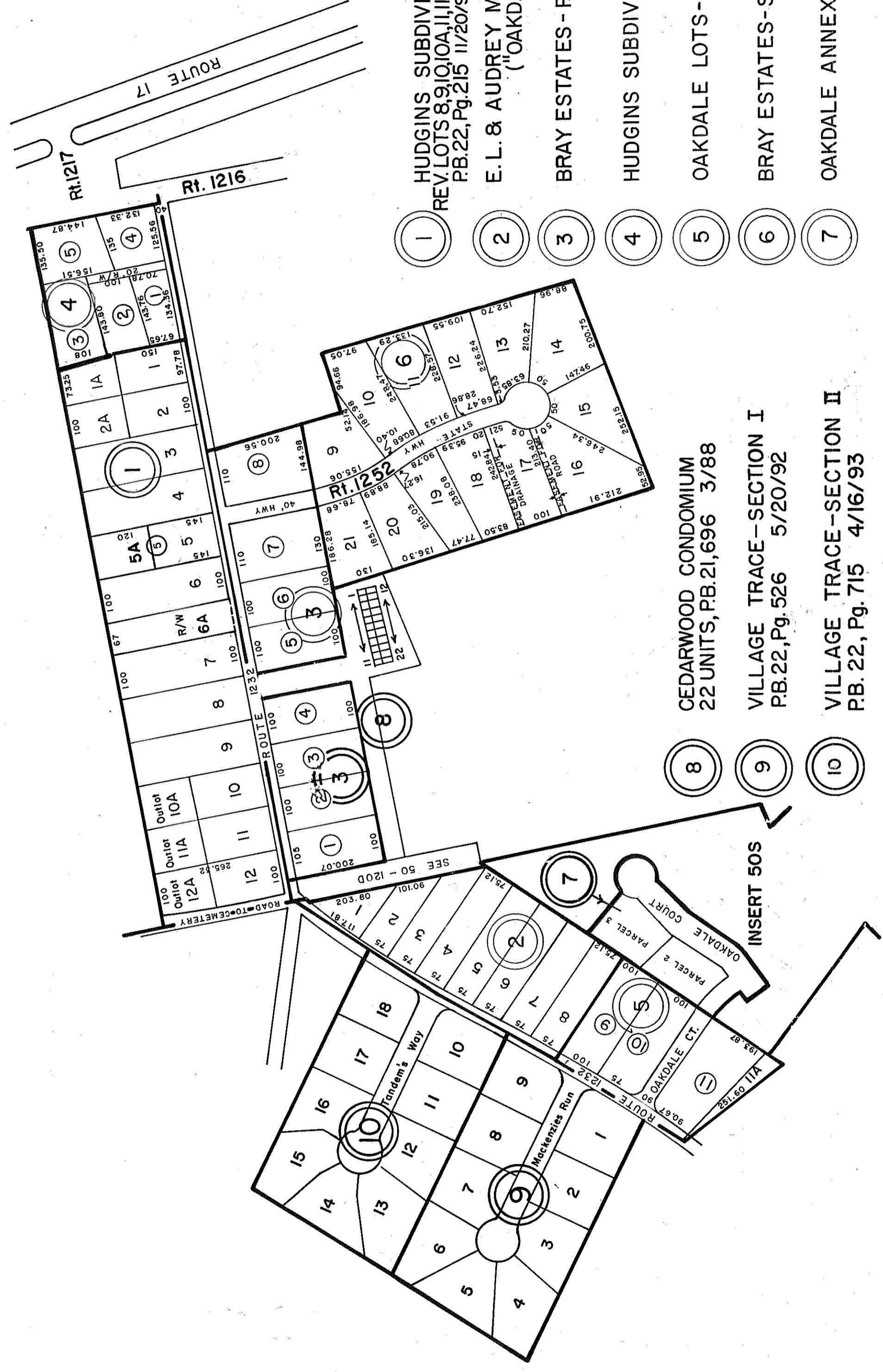
GLoucester County



① Continue - Revised Lots 5&6 Per P.B. 26, Pg. Per P.B. 26, Pg. 58, 1/11/12

- ⑤ KEMP'S LANE - LOTS 1-5 - P.B. 12-21 & PARCEL C P.B. 20, Pg. 33 - 7/7/83
- ⑥ RAIN TREE FOREST - LOTS 1-2 P.B. 12-40
- ⑦ RAIN TREE FOREST - LOTS 3-13 D.B. 208-353, P.B. 13-7
- ⑧ TANGLEWOOD - LOTS 6, 7 & 8 P.B. 20 - 347
- ⑨ TANGLEWOOD - P.B. 268, Pg. 244
- ⑩ ABINGDON OFFICE PARK P.B. 21, Pg. 557 11/87 P.B. 21, Pg. 776 6/88
- ① HAYES STORE HEIGHTS-RELEASE INDENTURE -(VACATION), LOTS 9-35 & 37-116, DB 86-490 LOTS 1-8 & 117-137 P.B. 1, Pg. 226 11/47
- ② LOTS SURVEYED FOR LESLIE R. WILLIAMS - P.B. 3, Pg. 356
- ③ WOODLAND HEIGHTS- P.B. 3, Pg. 378
- ④ RIPCHICK SUBDIVISION - P.B. 5, Pg. 82 REVISION LOT 9 - P.B. 12-65 REVISION LOT 9B - P.B. 22-1107

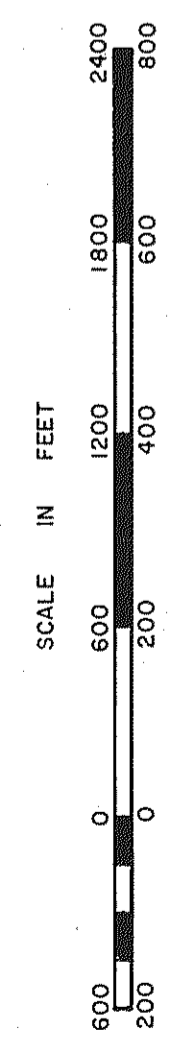
INSERT 50D



- ① HUDGINS SUBDIVISION - REVISED SECTION II REV. LOTS 8, 9, 10A, 11, 11A, 12, 12A P.B. 5, Pg. 64 P.B. 22, Pg. 215 11/20/90
- ② E. L. & AUDREY M. SEAWELL LOTS ("OAKDALE") P.B. 1, Pg. 347
- ③ BRAY ESTATES - P.B. 4, Pg. 207; P.B. 5, Pg. 111 (REV)
- ④ HUDGINS SUBDIVISION - P.B. 4, Pg. 224
- ⑤ OAKDALE LOTS - P.B. 4, Pg. 237 (lots 9, 10 & 11)
- ⑥ BRAY ESTATES - SECTION II - P.B. 6, Pg. 65 (lots 9-21)
- ⑦ OAKDALE ANNEX - P.B. 6, Pg. 28 (lots 1-8)

INSERT 50E

- ⑧ CEDARWOOD CONDOMINIUM 22 UNITS, P.B. 21, 696 3/88
- ⑨ VILLAGE TRACE - SECTION I P.B. 22, Pg. 526 5/20/92
- ⑩ VILLAGE TRACE - SECTION II P.B. 22, Pg. 715 4/16/93



GLoucester Point District

SECTION INSERT 50D,E