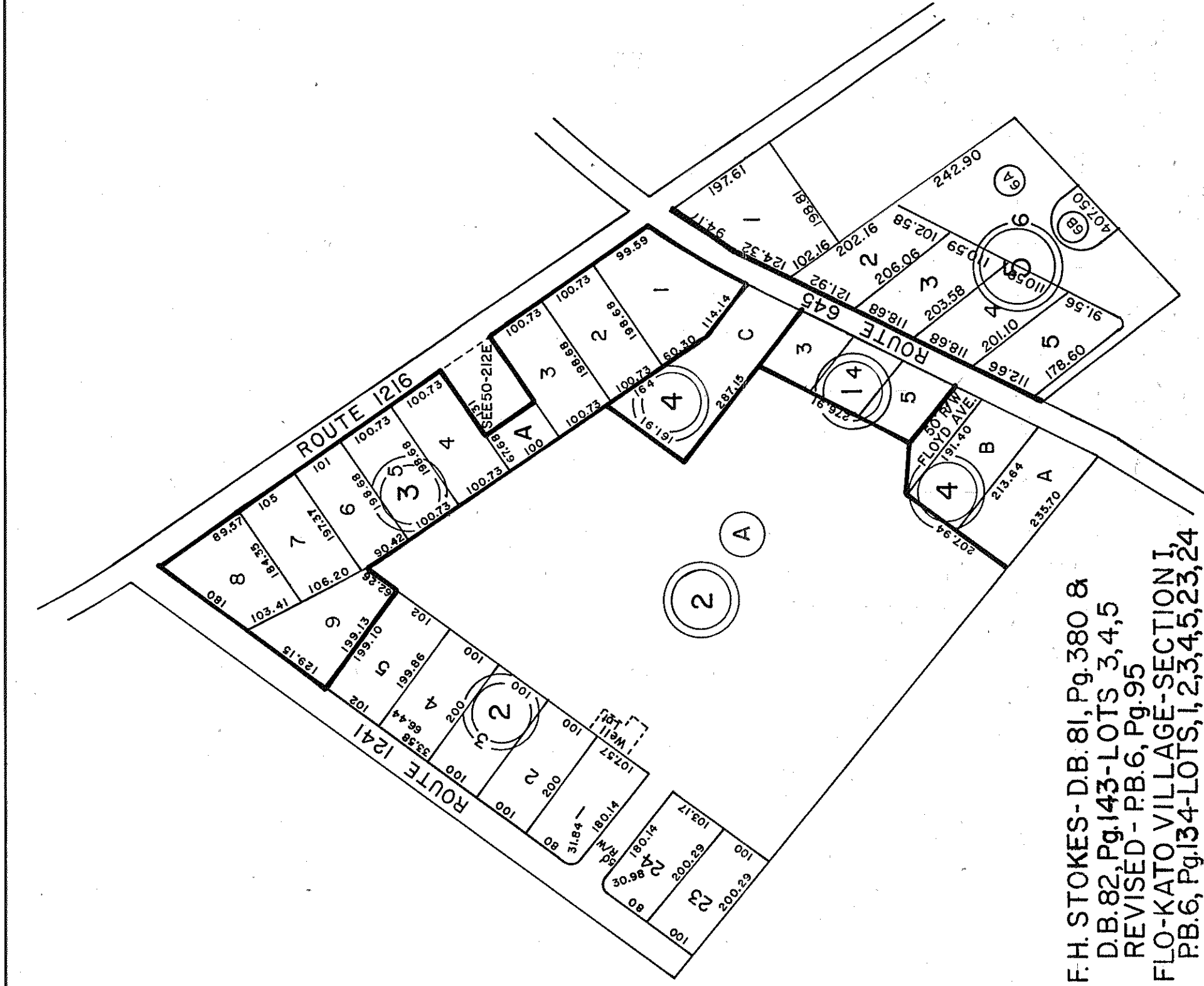
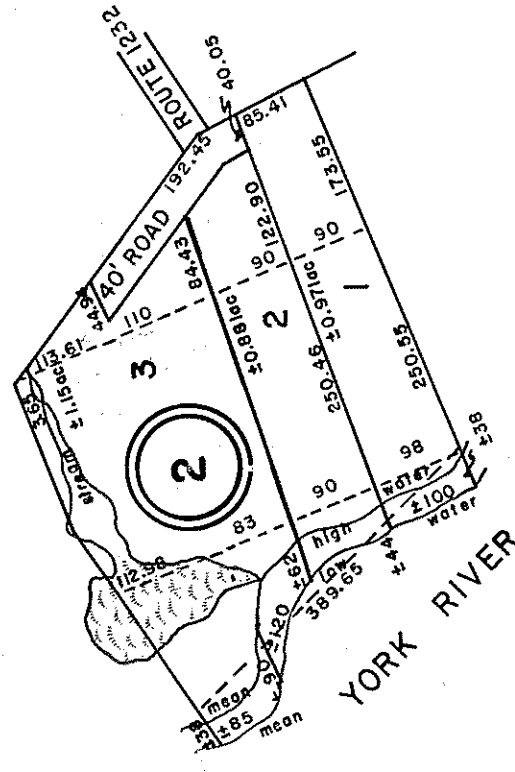


GLoucester County



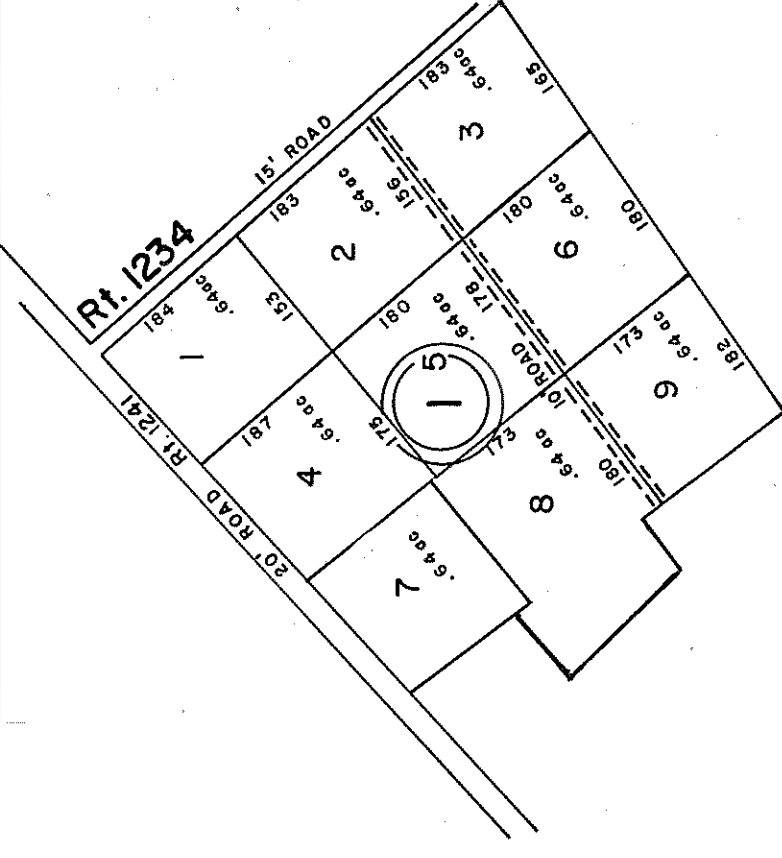
- 1 F.H. STOKES- DB 81, Pg. 380 & D.B. 82, Pg. 143- LOTS 3, 4, 5 REVISED - P.B. 6, Pg. 95
- 2 FLO-KATO VILLAGE-SECTION I, P.B. 6, Pg. 134- LOTS 1, 2, 3, 4, 5, 23, 24 & PARCEL A
- 3 FLO-KATO VILLAGE-SECTION II, P.B. 6, Pg. 184- LOTS 1, 2, 3, 4, 5, 6, 7, 8, 9 & PARCEL A
- 4 F.H. STOKES D.B. 167, Pg. 161 LOTS A, B, C
- 5 HOWELL LOTS P.B. 19, Pg. 73 LOTS 1-6

INSERT 50F



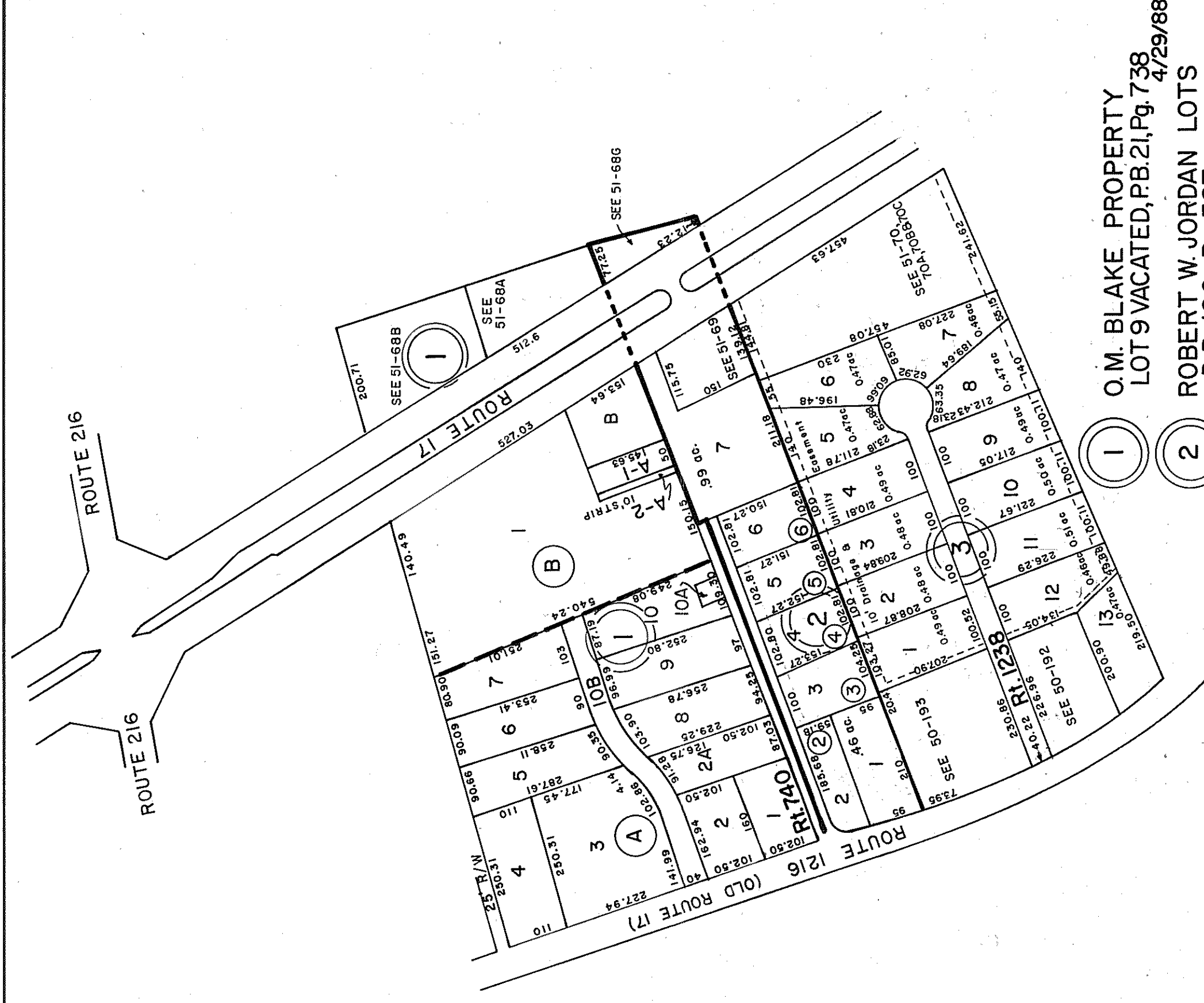
- 1 McDERMOTT LOTS P.B. 16, Pg. 135 LOTS 1-4

INSERT 50J



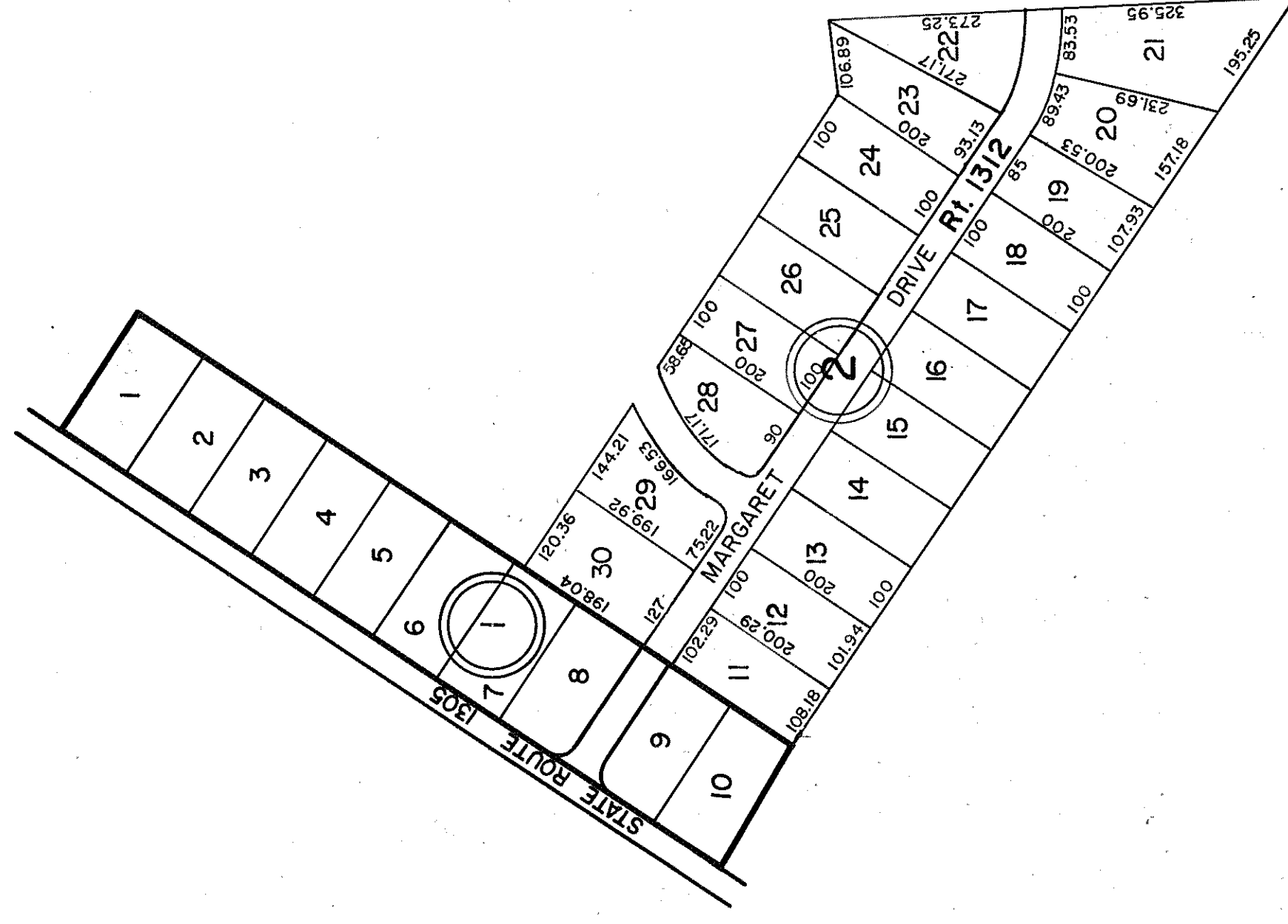
- 1 RAYMOND STOKES LOTS D.B. 134, Pg. 103 REVISED LOT 8 per P.B. 26, Pg. 361, 7/25/14
- 2 FITZHUGH C. MOORE & SPINDLER KRAUSE LOTS - P.B. 6, Pg. 31 Revised Lots 3 & 4, P.B. 25-45, 4/30/03

INSERT 50H



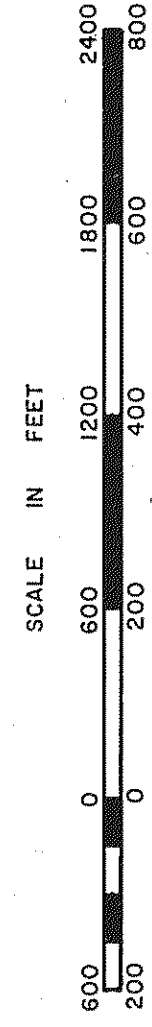
- 1 O.M. BLAKE PROPERTY LOT 9 VACATED, P.B. 21, Pg. 738 4/29/88
- 2 ROBERT W. JORDAN LOTS D.B. 106, Pg. 387
- 3 PINEWOOD SUBDIVISION P.B. 4, Pg. 6

INSERT 50G



- 1 NEVA TERRACE- SEC. I, D.B. 210-438 LOTS I-10 P.B. 13-61, RESUBDIVISION OF LOTS 5 & 6, DB 214-61I, P.B. 214-614
- 2 NEVA TERRACE- SEC. II, D.B. 233-82 LOTS II-30 P.B. 17-16

INSERT 50I



GLoucester Point District

REVISED: 12/75, 12/79, 12/31/83/84/85/86/87/88/89/92/03/10/14

SECTION 50F, G, H, I, J
INSERT

PREPARED BY VIRGINIA STATE DEPARTMENT OF TAXATION, DIVISION OF REAL ESTATE APPRAISAL AND MAPPING