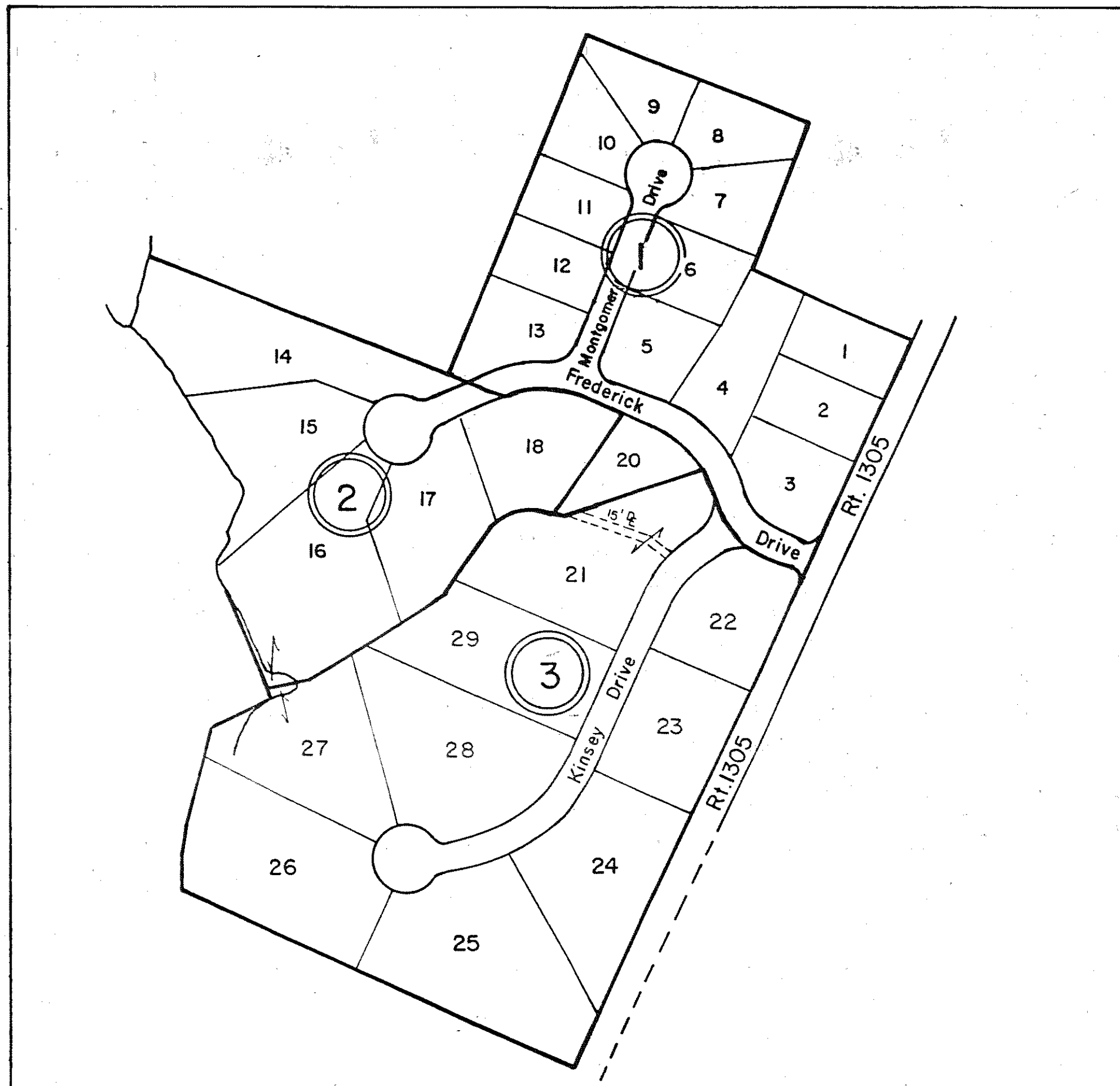
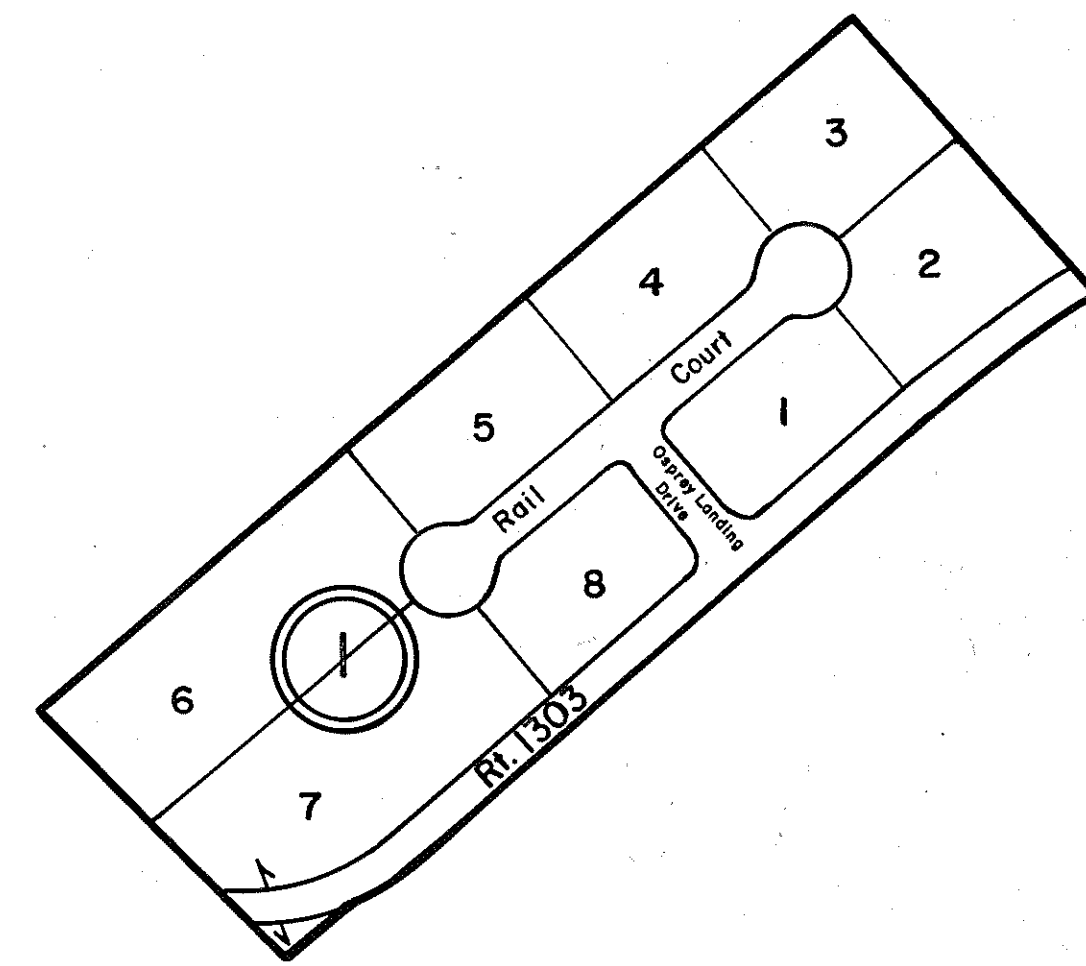


GLOUCESTER COUNTY



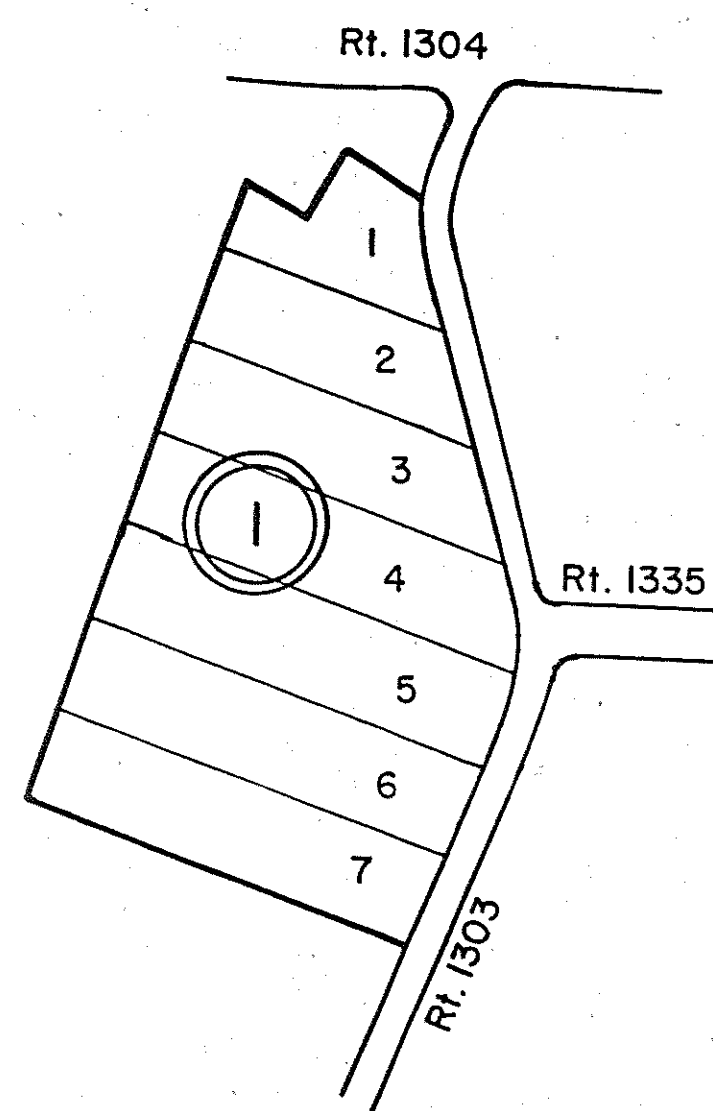
- ① DUNLAP WOODS
LOTS 1-13 & 20, P.B. 21, Pg. 258 12/86
- ② DUNLAP WOODS - Section I
LOTS 14-18, P.B. 23, Pg. 164 7/96
- ③ DUNLAP WOODS - Section II
LOTS 21-29, P.B. 23, Pgs. 335 & 336 5/16/97

INSERT 50L



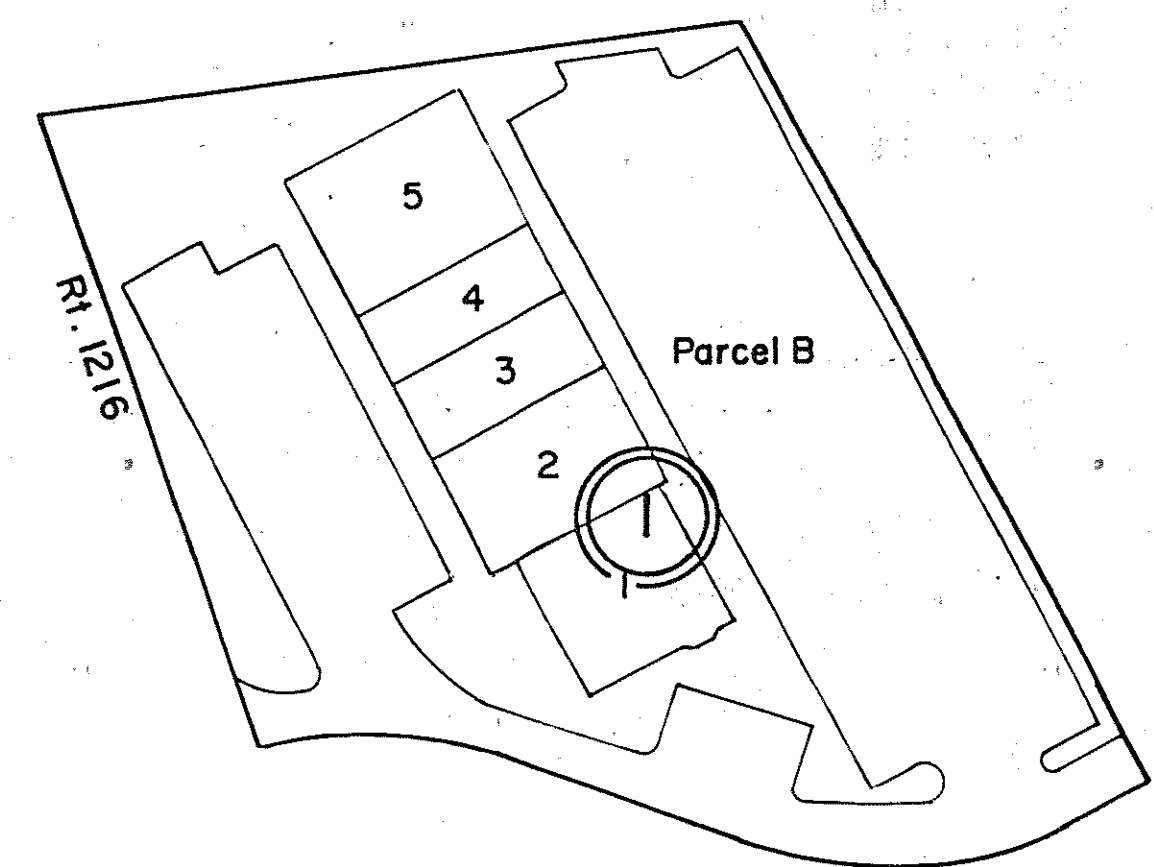
- ① RIVERS EDGE SUBDIVISION
LOTS 1-8 & A, P.B. 25, Pg. 397 8/19/05

INSERT 50Q



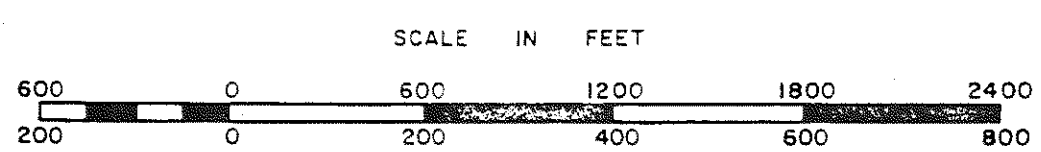
- ① BARRACK RUN
LOTS 1-7, P.B. 23, Pg. 42 12/18/95

INSERT 50P



- ① TYNDALL SQUARE CONDOMINIUM
UNITS 1-5 P.B. 22, Pg. 80 5/8/90

INSERT 50N



GLOUCESTER POINT DISTRICT

1"=50'

SECTION 50L,N,P,Q
INSERT