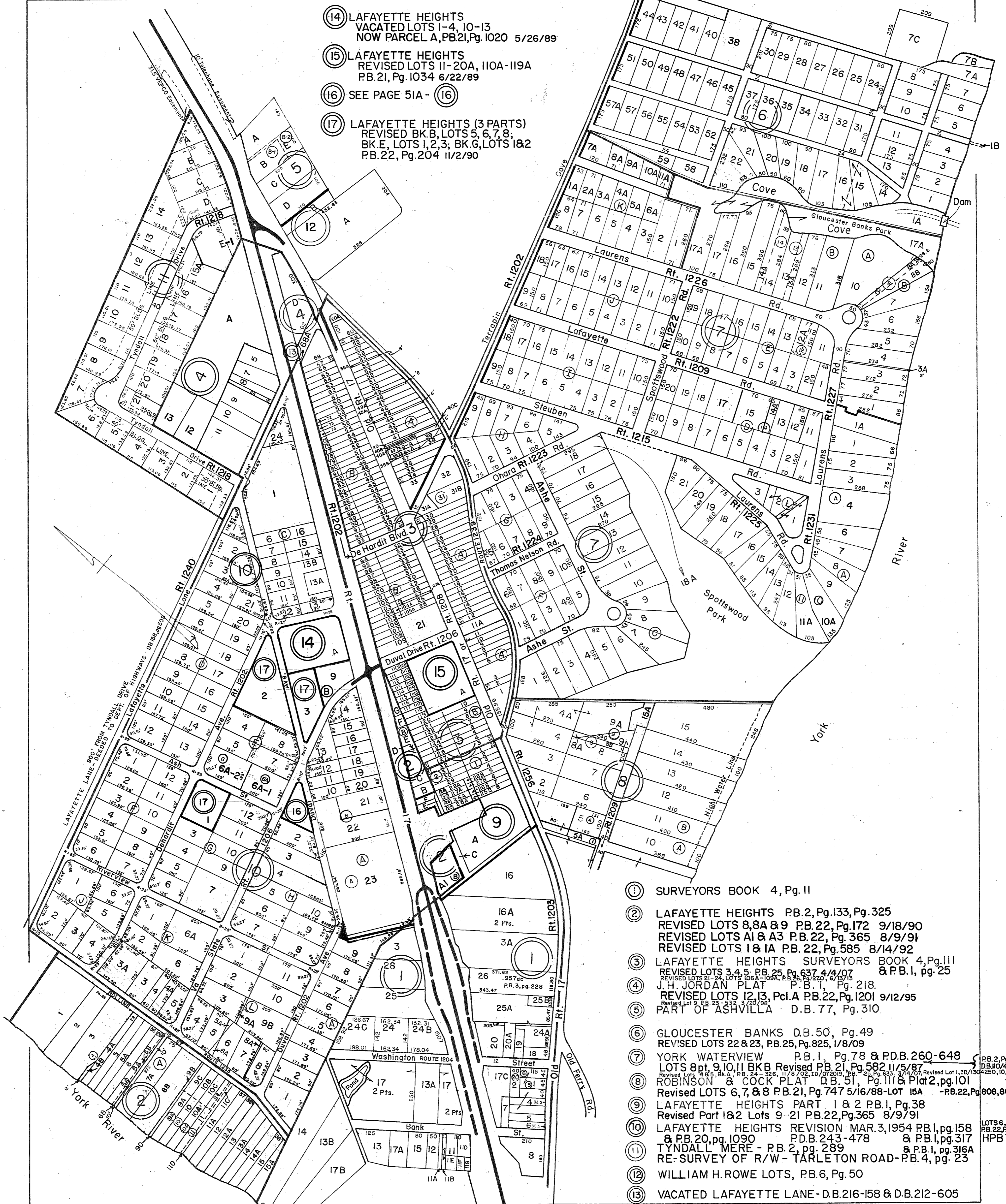


# GLOUCESTER COUNTY



- ⑭ LAFAYETTE HEIGHTS  
VACATED LOTS 1-4, 10-13  
NOW PARCEL A, PB.21, Pg. 1020 5/26/89
- ⑮ LAFAYETTE HEIGHTS  
REVISED LOTS 11-20A, 110A-119A  
PB. 21, Pg. 1034 6/22/89
- ⑯ SEE PAGE 51A - ⑯
- ⑰ LAFAYETTE HEIGHTS (3 PARTS)  
REVISED BK. B, LOTS 5, 6, 7, 8;  
BK. E, LOTS 1, 2, 3; BK. G, LOTS 1&2  
PB. 22, Pg. 204 11/2/90

- ① SURVEYORS BOOK 4, Pg. 11
- ② LAFAYETTE HEIGHTS PB. 2, Pg. 133, Pg. 325  
REVISED LOTS 8, 8A & 9 PB. 22, Pg. 172 9/18/90  
REVISED LOTS A1 & A3 PB. 22, Pg. 365 8/9/91  
REVISED LOTS 1& 1A PB. 22, Pg. 585 8/14/92
- ③ LAFAYETTE HEIGHTS SURVEYORS BOOK 4, Pg. 111  
REVISED LOTS 3, 4, 5 PB. 25, Pg. 637 4/4/07  
REVISED LOTS 21-24, LOTS 106A-109A, PB. 26, Pg. 270, 6/15/15
- ④ J. H. JORDAN PLAT P. B. 1, Pg. 218.  
REVISED LOTS 12, 13, Pct. A PB. 22, Pg. 1201 9/12/95
- ⑤ PART OF ASHVILLA D. B. 77, Pg. 310
- ⑥ GLOUCESTER BANKS D.B. 50, Pg. 49  
REVISED LOTS 22 & 23, PB. 25, Pg. 825, 1/8/09
- ⑦ YORK WATERVIEW P. B. 1, Pg. 78 & P.D.B. 260-648  
LOTS 8pt, 9, 10, 11 BKB Revised PB. 21, Pg. 582 11/5/87  
REVISED LOTS 4 & 5, BK. A, P.B. 24-326, 11/8/02, 10/07/2019, Pg. 25, Pg. 633 3/14/07, Revised Lot 1, 10/13/04, 250, 10/1/13
- ⑧ ROBINSON & COCK PLAT D.B. 51, Pg. 111 & Plat 2, pg. 101  
REVISED LOTS 6, 7, & 8 PB. 21, Pg. 747 5/16/88-LOT 15A -PB. 22, Pg. 808, 808A-9/10/93
- ⑨ LAFAYETTE HEIGHTS PART 1 & 2 P.B. 1, Pg. 38  
REVISED Part 1&2 Lots 9-21 PB. 22, Pg. 365 8/9/91
- ⑩ LAFAYETTE HEIGHTS REVISION MAR. 3, 1954 P.B. 1, pg. 158  
& P.B. 20, pg. 1090 P.D.B. 243-478 & P.B. 1, pg. 317  
TYNDALL MERE - P.B. 2, pg. 289 & P.B. 1, pg. 316A  
RE-SURVEY OF R/W - TARLETON ROAD - P.B. 4, pg. 23
- ⑪ WILLIAM H. ROWE LOTS, PB. 6, Pg. 50
- ⑫ VACATED LAFAYETTE LANE - D.B. 216-158 & D.B. 212-605