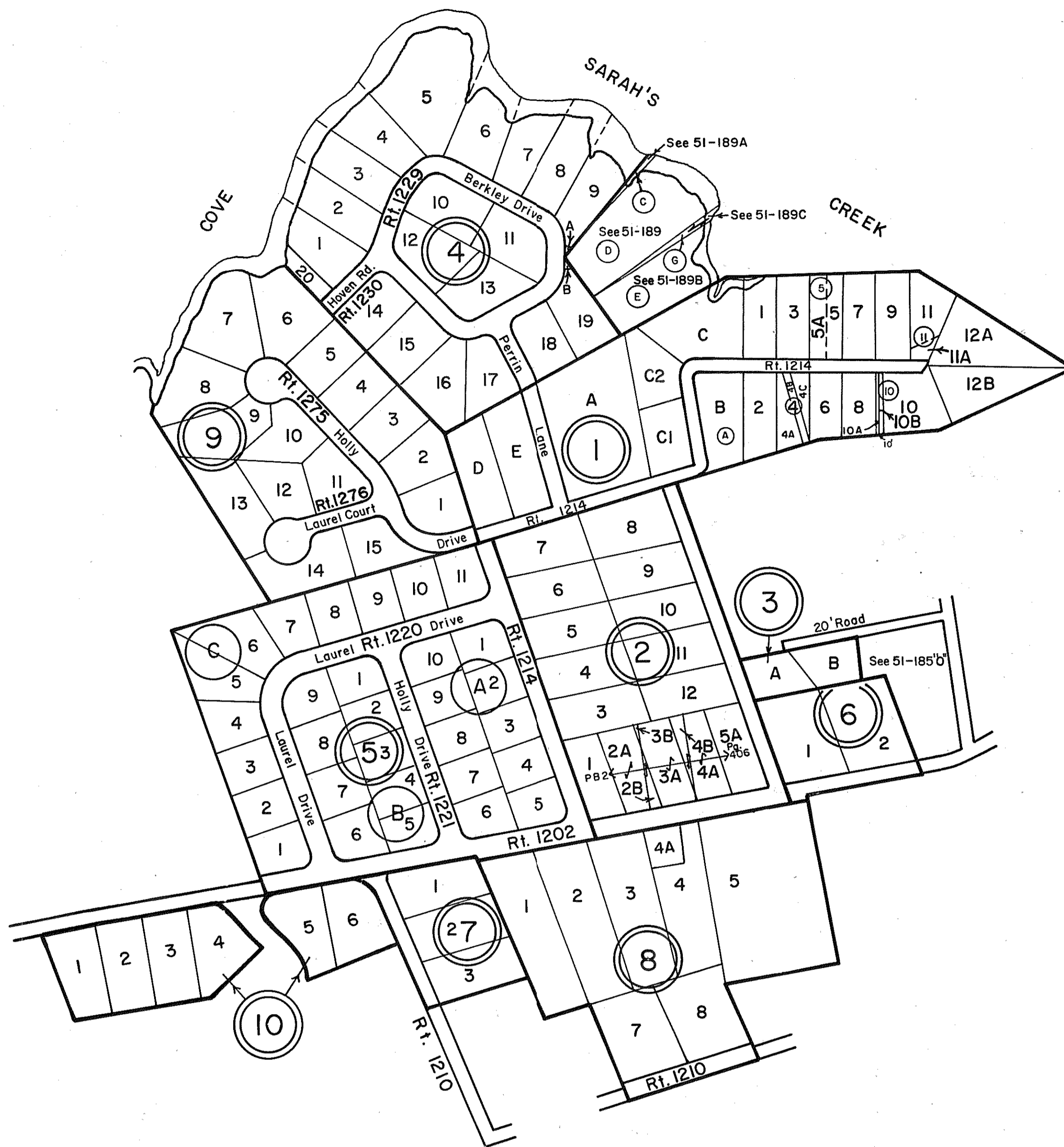
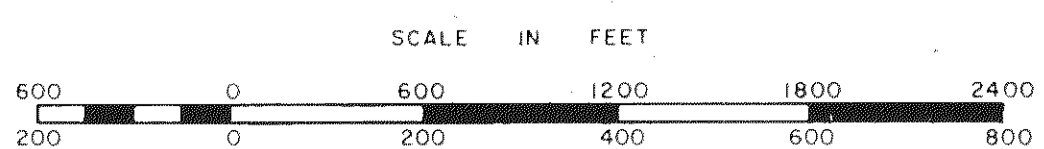


GLOUCESTER COUNTY



- ① J.H. JORDAN PLAT #2 - P.B. 1, Pg. 280
LOT 10 REVISED P.B. 21, Pg. 655 1/21/85 LOT 5 REVISED - D.B. 122, Pg. 130 6/61
LOT 4 REVISED D.P.B. 125, Pg. 144 3/62 CORRECTED 1/90
- ② W.A. NEWBILL - D.B. 114, Pg. 350
LOT 6&7 REVISED P.B. 24, Pg. 54 2/22/01
- ③ W.A. NEWBILL SURVEY - D.B. 114, Pg. 389
- ④ BERKLEY POINT - P.B. 3, Pg. 128
- ⑤ RIVERDALE - P.B. 2, Pg. 169
- ⑥ W.A. NEWBILL LOTS - P.B. 4, Pg. 228
- ⑦ GUNPOINT - P.B. 5, Pg. 81
- ⑧ GUNPOINT, SEC. ONE - P.B. 16, Pg. 83
LOTS 5&6 REVISED - P.B. 22, Pg. 965 6/29/94
LOT 4 REVISED P.D.B. Pg. 440 12/8/95
- ⑨ HOLLY COVE - P.B. 19, Pg. 92
- ⑩ HOLLY ROD FARM - P.B. 22, Pg. 424



GLOUCESTER POINT DISTRICT

SECTION
INSERT **51C**