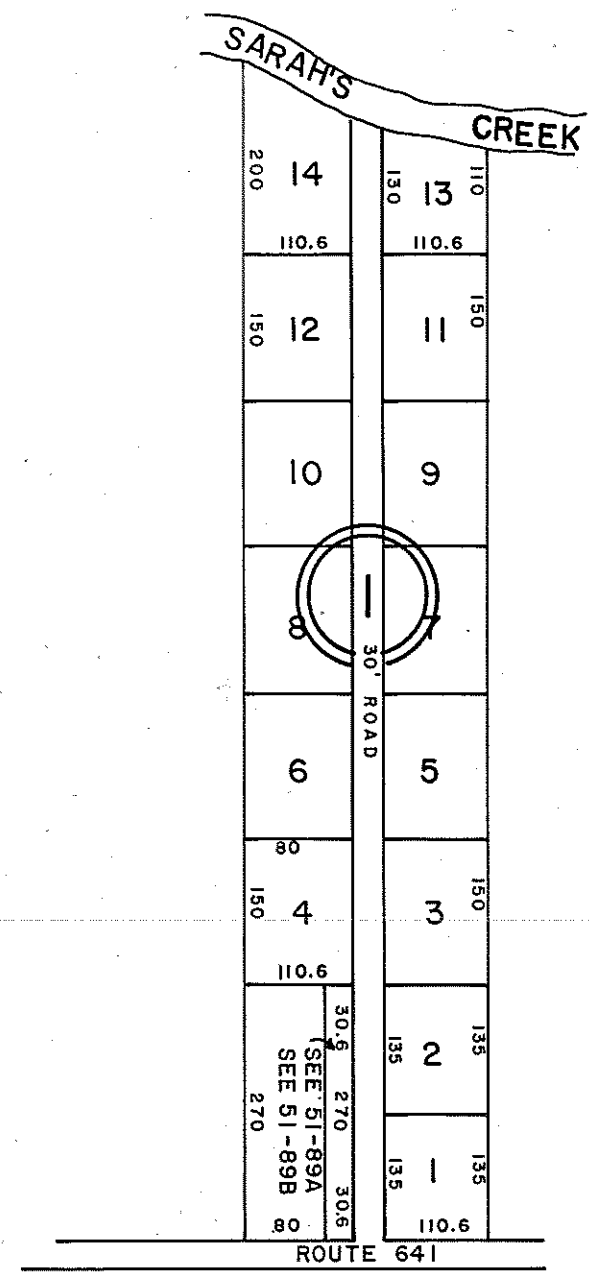
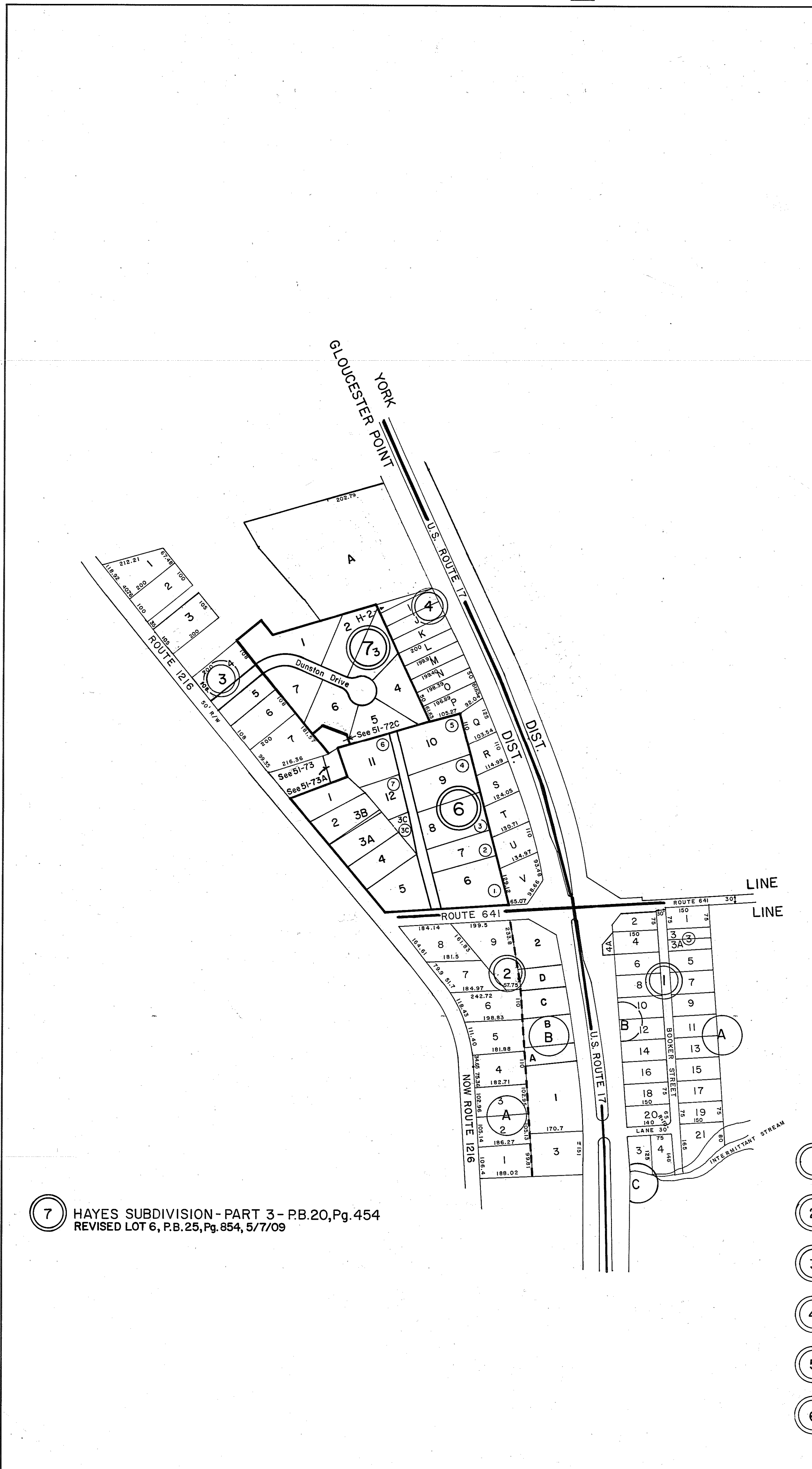


GLOUCESTER COUNTY



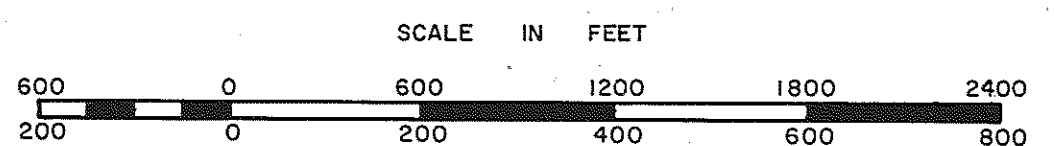
① W.A. CONNER JR. PLAT
D.B. 99, Pg. 235

YORK DISTRICT INSERT 51D

⑦ HAYES SUBDIVISION - PART 3 - P.B. 20, Pg. 454
REVISED LOT 6, P.B. 25, Pg. 854, 5/7/09

- ① FOX HILL DEVELOPMENT P.B. 1, Pg. 375
REVISED LOTS 3 & 4, P.B. 26, Pg. 444, 7/2/15
- ② FOX HILL DEVELOPMENT
BLOCKS A & B - P.B. 2, Pgs. 338, 341
- ③ HAYES SUBDIVISION - P.B. 4, Pg. 249
REVISED LOT 3, PER P.B. 26, Pg. 552, 10/19/16
- ④ HAYES SUBDIVISION - PART 1, P.B. 4, Pg. 87
REVISED LOTS A-HI, P.B. 26, Pg. 466, 466A
9/30/15
- ⑤ VACATED - PER P.B. 26, Pg. 543, 9/16/16
- ⑥ MARSHALL HEIGHTS - P.B. 16, Pg. 25
P.B. 21, Pg. 658 1/22/88

INSERT 51E



GLOUCESTER POINT
YORK DISTRICT

SECTION
INSERT 51D, 51E