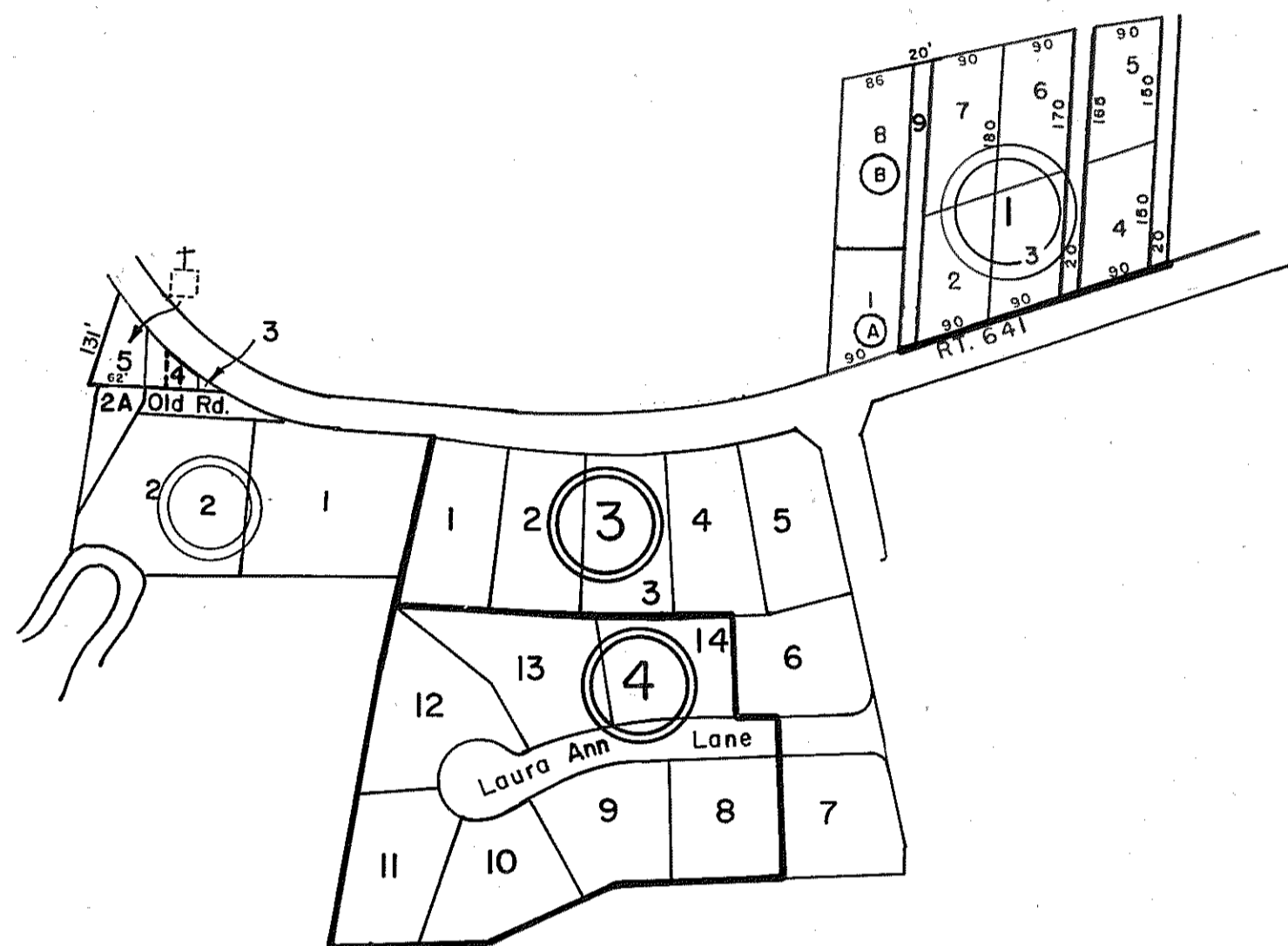


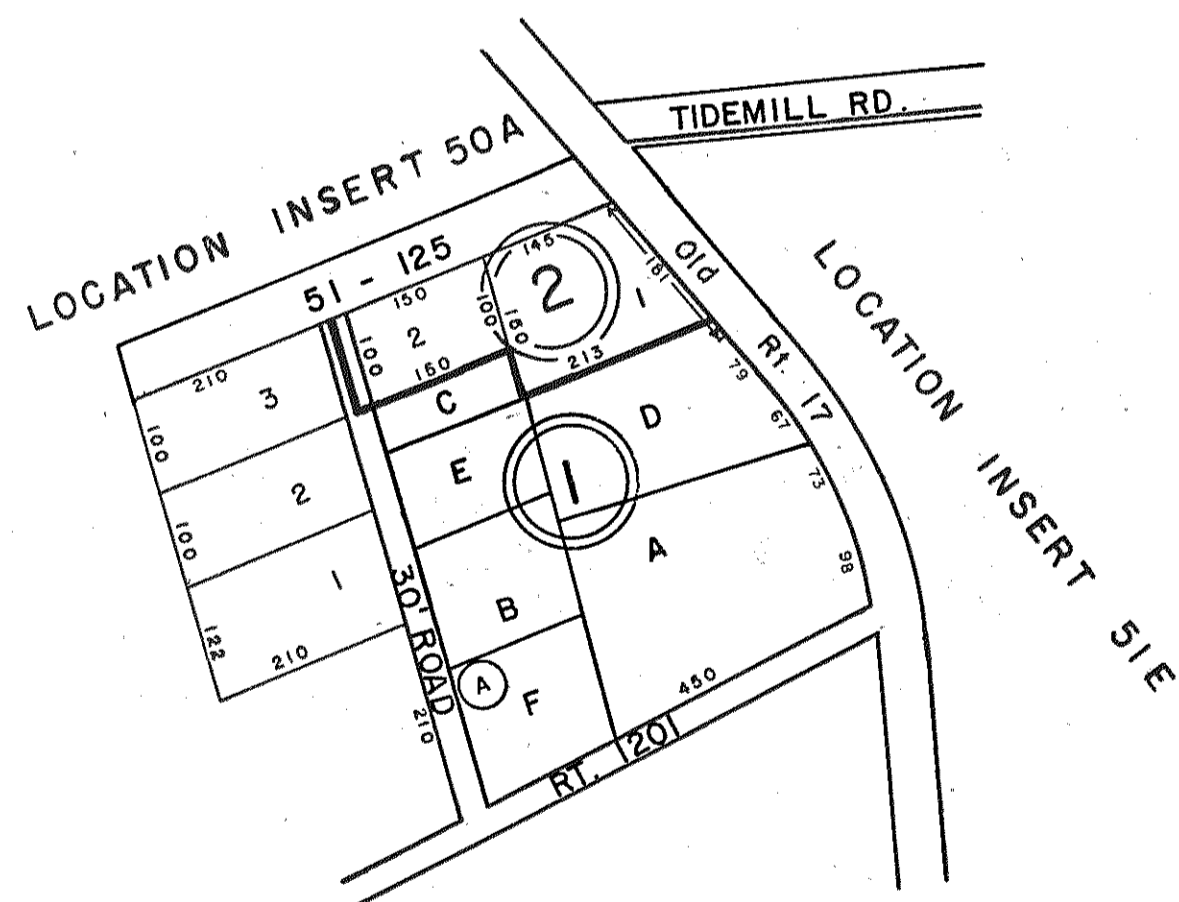
GLOUCESTER COUNTY

- ① LOTS SURVEYED FOR FAUNTLEROY & ADDIE
MAE BROWN - P.B.2, Pg. 252
Revised Lots 1 & 8, P.B. 25, Pg. 660, 6/28/07
- ② T. R. HARRIS - PLAT - P.B.6, Pg. 85 5/72 & P.B.22, Pg. 744-6/1/93
- ③ TIDEMILL ACRES - LOTS 1-7 - P.B.22, Pg. 209 11/8/90
- ④ TIDEMILL ESTATES, SECTION 2 - LOTS 8-14 -
P.B.22, Pg. 270 3/20/91



YORK DISTRICT

INSERT 5II



- ① HUGO SMITH SURVEY - D. B. 102, Pg. 442
- ② ACREAGE PARCELS - P. B. 2, Pg. 308

GLOUCESTER POINT DISTRICT

INSERT 5IK

REV. 1/63, 12/31/83/84/85/86/87/88/90/91/92/93/07/10

REV. 12/75, 12/79

SCALE IN FEET



YORK & GLOUCESTER POINT DISTRICTS

VA. STATE DEPT. OF TAXATION, DIVISION OF REAL ESTATE APPRAISAL AND MAPPING

INSERT 5II & 5IK