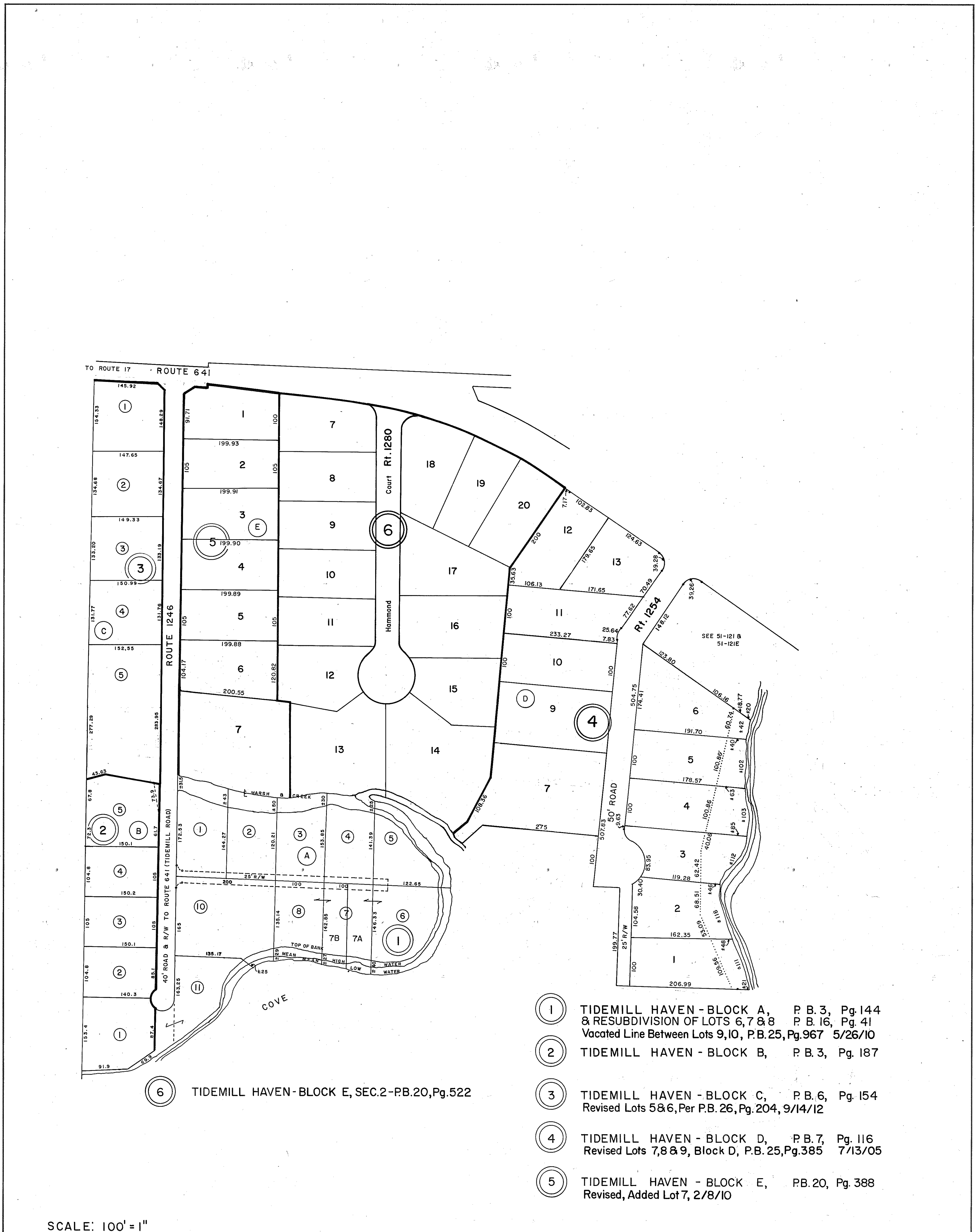
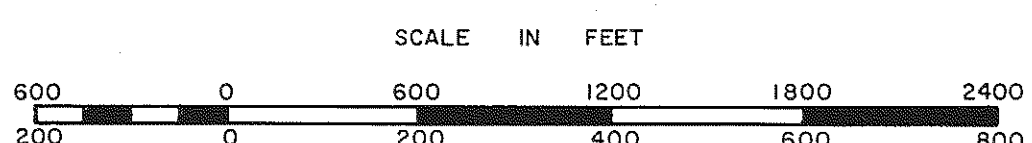


GLOUCESTER COUNTY



- ① TIDEMILL HAVEN - BLOCK A, P.B. 3, Pg. 144 & RESUBDIVISION OF LOTS 6, 7 & 8, P.B. 16, Pg. 41
Vacated Line Between Lots 9, 10, P.B. 25, Pg. 967 5/26/10
- ② TIDEMILL HAVEN - BLOCK B, P.B. 3, Pg. 187
- ③ TIDEMILL HAVEN - BLOCK C, P.B. 6, Pg. 154
Revised Lots 5 & 6, Per P.B. 26, Pg. 204, 9/14/12
- ④ TIDEMILL HAVEN - BLOCK D, P.B. 7, Pg. 116
Revised Lots 7, 8 & 9, Block D, P.B. 25, Pg. 385 7/13/05
- ⑤ TIDEMILL HAVEN - BLOCK E, P.B. 20, Pg. 388
Revised, Added Lot 7, 2/8/10

SCALE: 100' = 1"



GLOUCESTER POINT DISTRICT

SECTION _____
INSERT **51L**