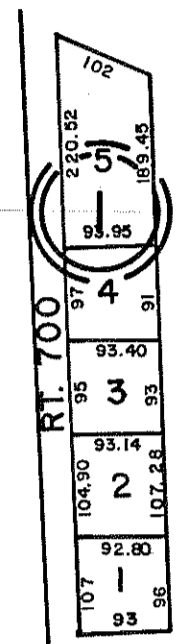
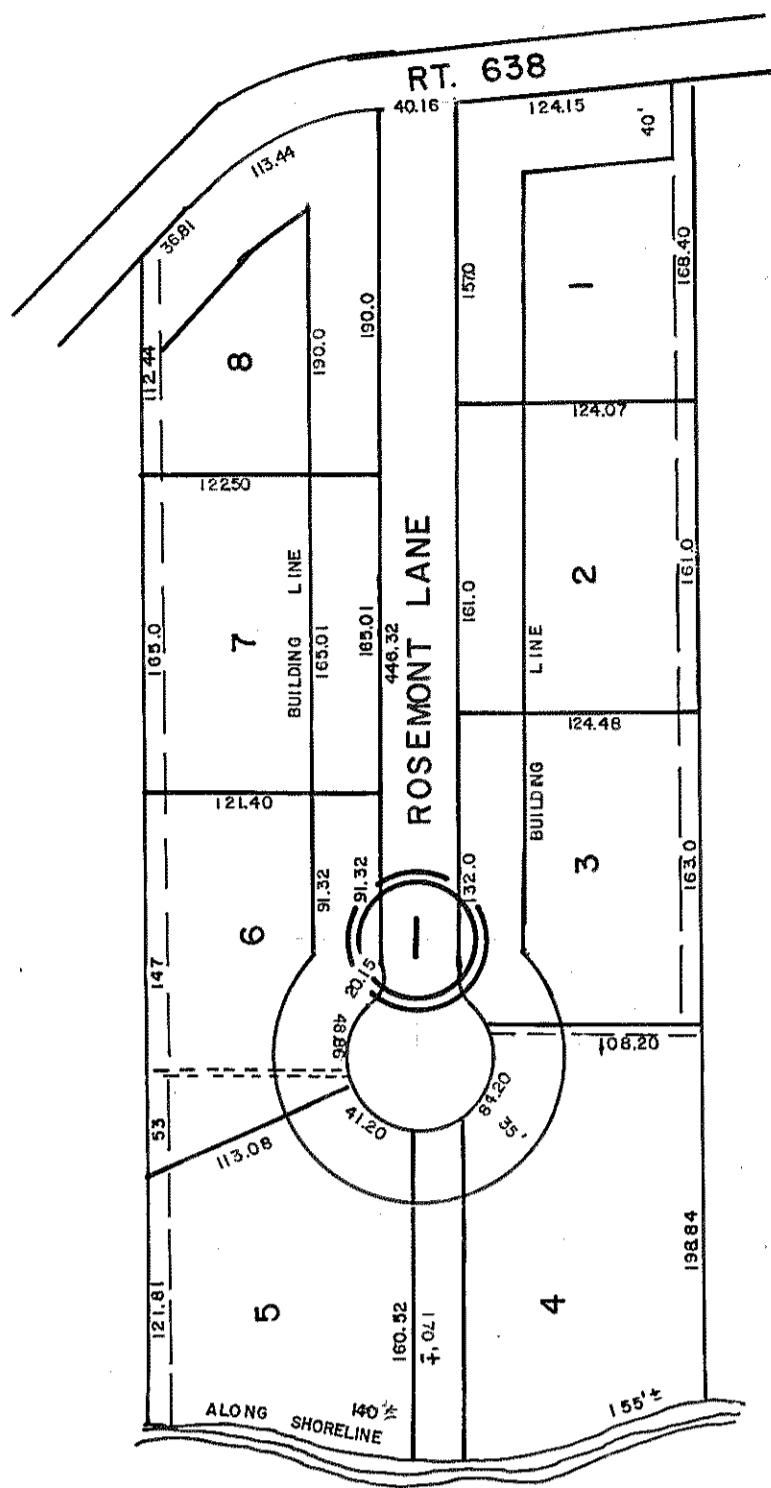


GLOUCESTER COUNTY



① LOTS SURVEYED FOR STANLEY E. WILLIAMS ET UX PB 4- 212

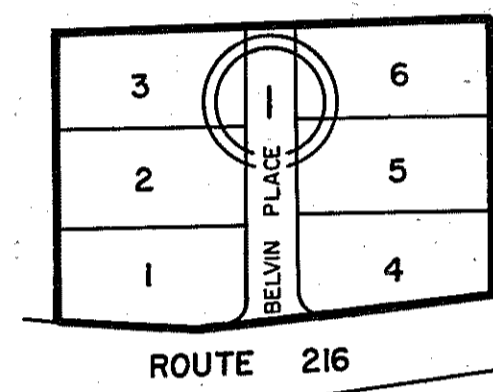
INSERT 5IM
YORK DISTRICT



SCALE: 1" = 100'

① ROSEMONT
PB. 4 pg. 4
& PB. 20 pg. 239

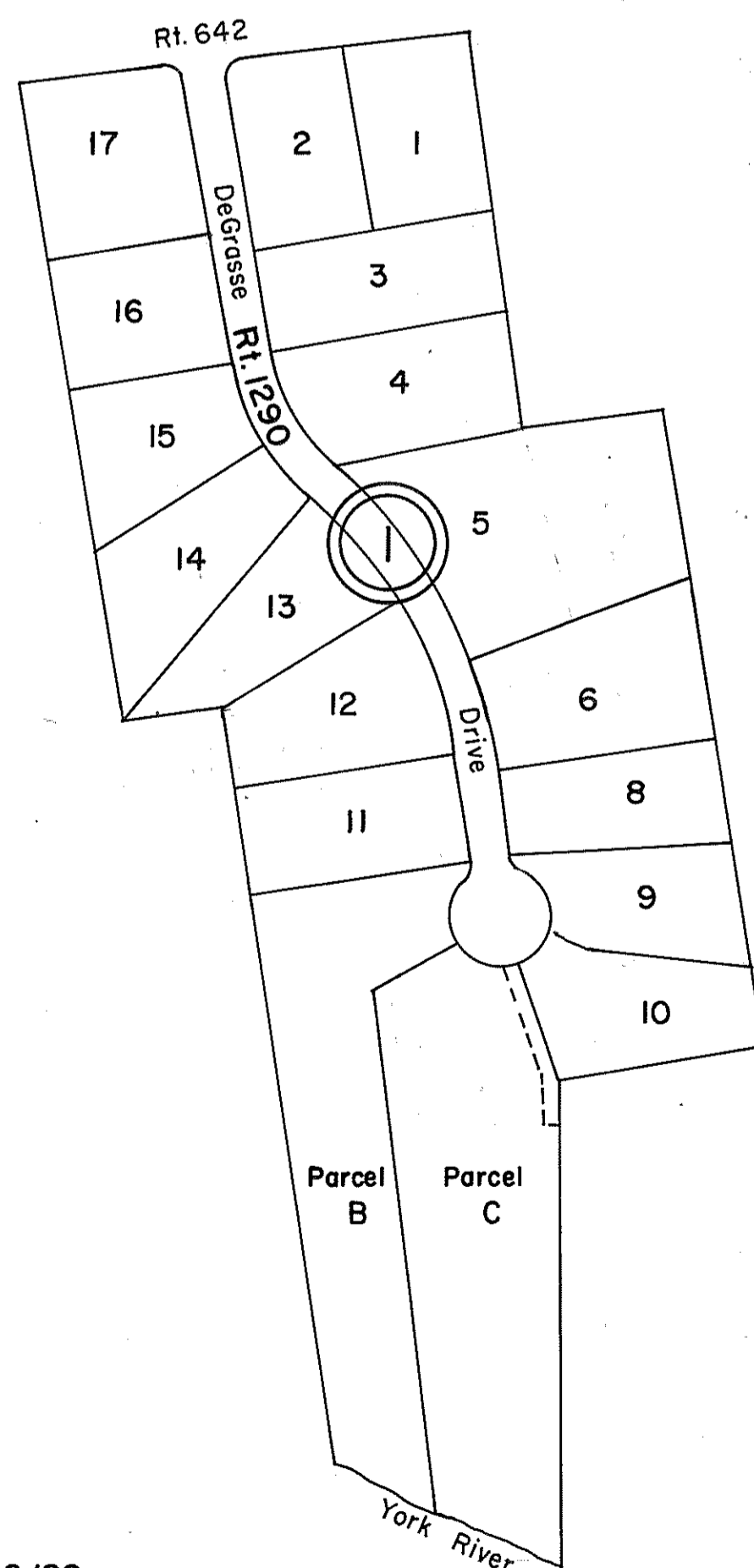
INSERT 5IN
YORK DISTRICT



① BELVIN PLACE - SEC. I
P.B.14, Pg. 29

YORK DISTRICT

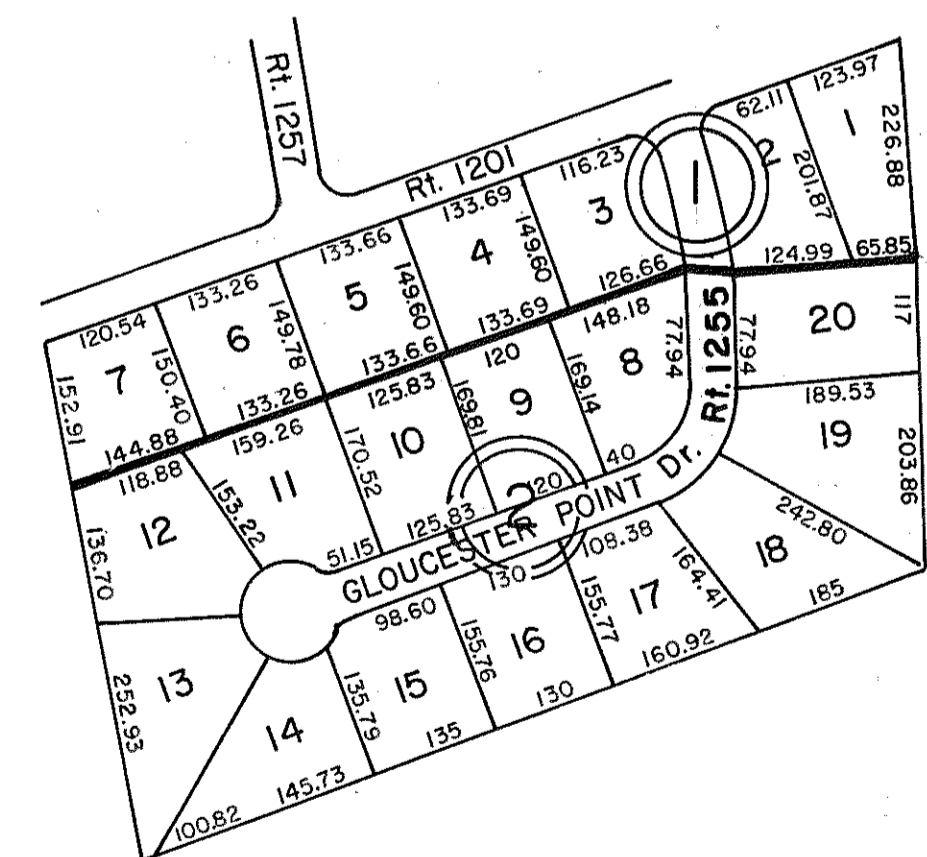
INSERT 5IP



① VICTORY HILL ESTATES
LOTS 1-17 & PARCELS B & C
P.B. 21, Pg. 49 4/16/86
PARCELS B & C REVISED P.B. 21, Pg. 659 1/26/88
LOTS 9 & 10 REVISED P.B. 221, Pg. 186 10/5/90
LOTS 5, 6 & 7 REVISED P.B. 22, Pg. 558 7/1/92

YORK DISTRICT

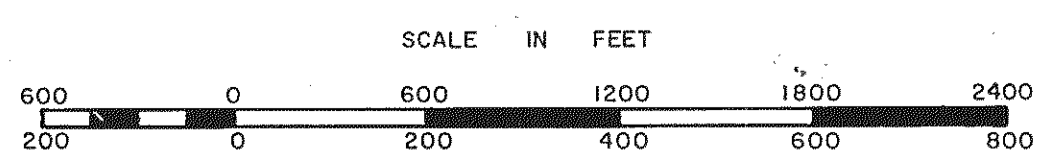
INSERT 5IT



① GLOUCESTER POINT ESTATES
PB. 20, Pg. 211
PB. 20, Pg. 222 LOTS 1-7
② GLOUCESTER POINT ESTATES
PB. 20, Pg. 269 LOTS 8-20

GLOUCESTER POINT DISTRICT

INSERT 5IQ



GLOUCESTER POINT
YORK DISTRICT

SECTION _____
INSERT 5IM, N, P, Q, T