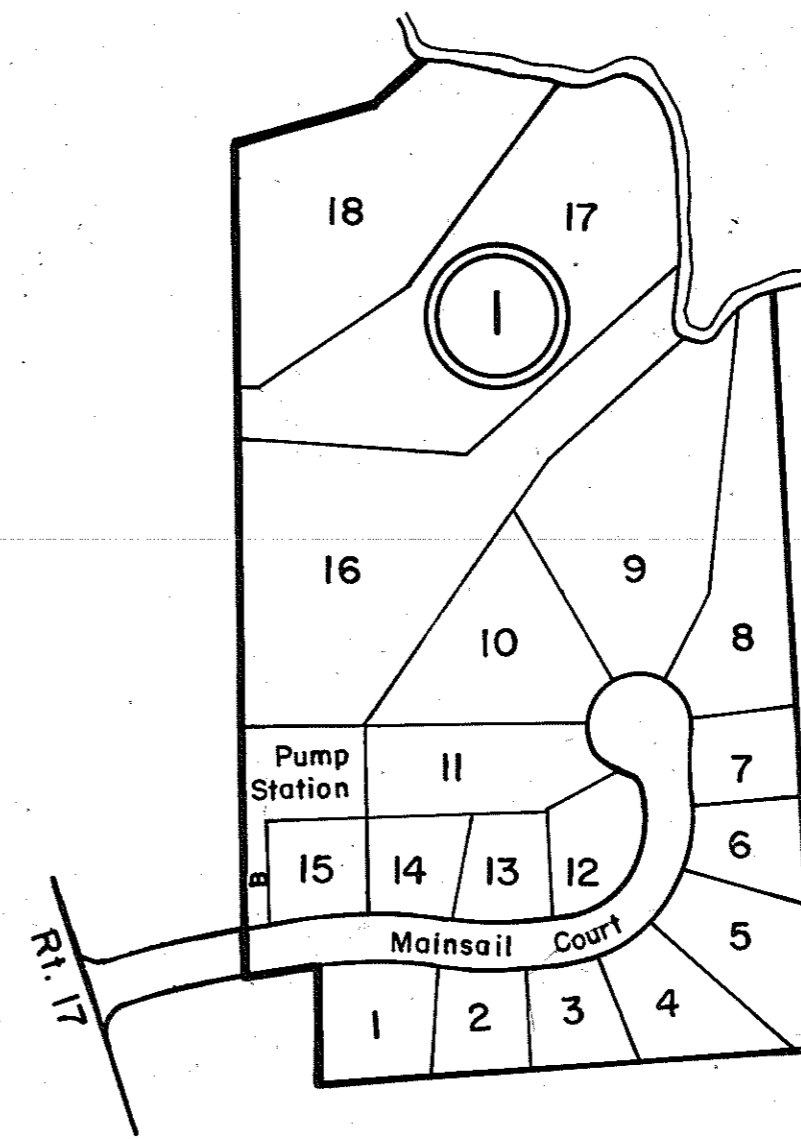
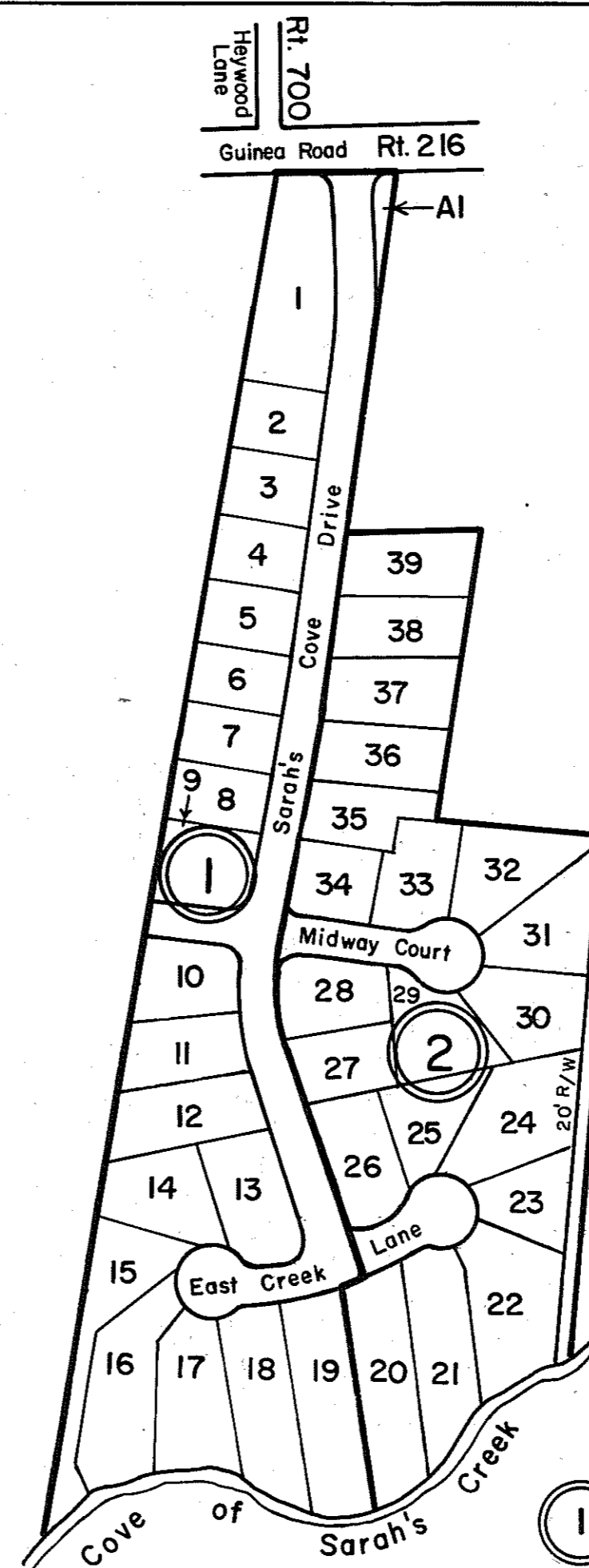


GLOUCESTER COUNTY



① SARAH'S CREEK LANDING
 Lots 1-18, Outlot A & Pump Station
 P.B. 23, Pgs. 792, 792A & 792B, 7/13/99
 Revised Outlot A, Per P.B. 26, Pg. 543, 9/16/16

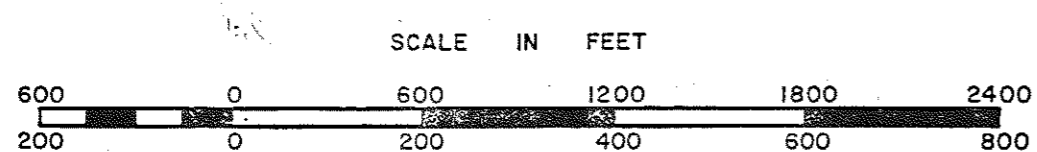
INSERT 51Y



① SARAH'S COVE
 SECTION ONE, LOTS 1-19
 P.B. 23, Pgs. 931, 931A, 5/12/00

② SARAH'S COVE
 SECTION TWO, LOTS 20-39
 P.B. 23, Pgs. 931, 931A, 5/12/00
 Revised Lots 22&23, P.B. 24-327, 11/14/02

INSERT 51Z



YORK DISTRICT

SECTION
 INSERT 51Y, Z