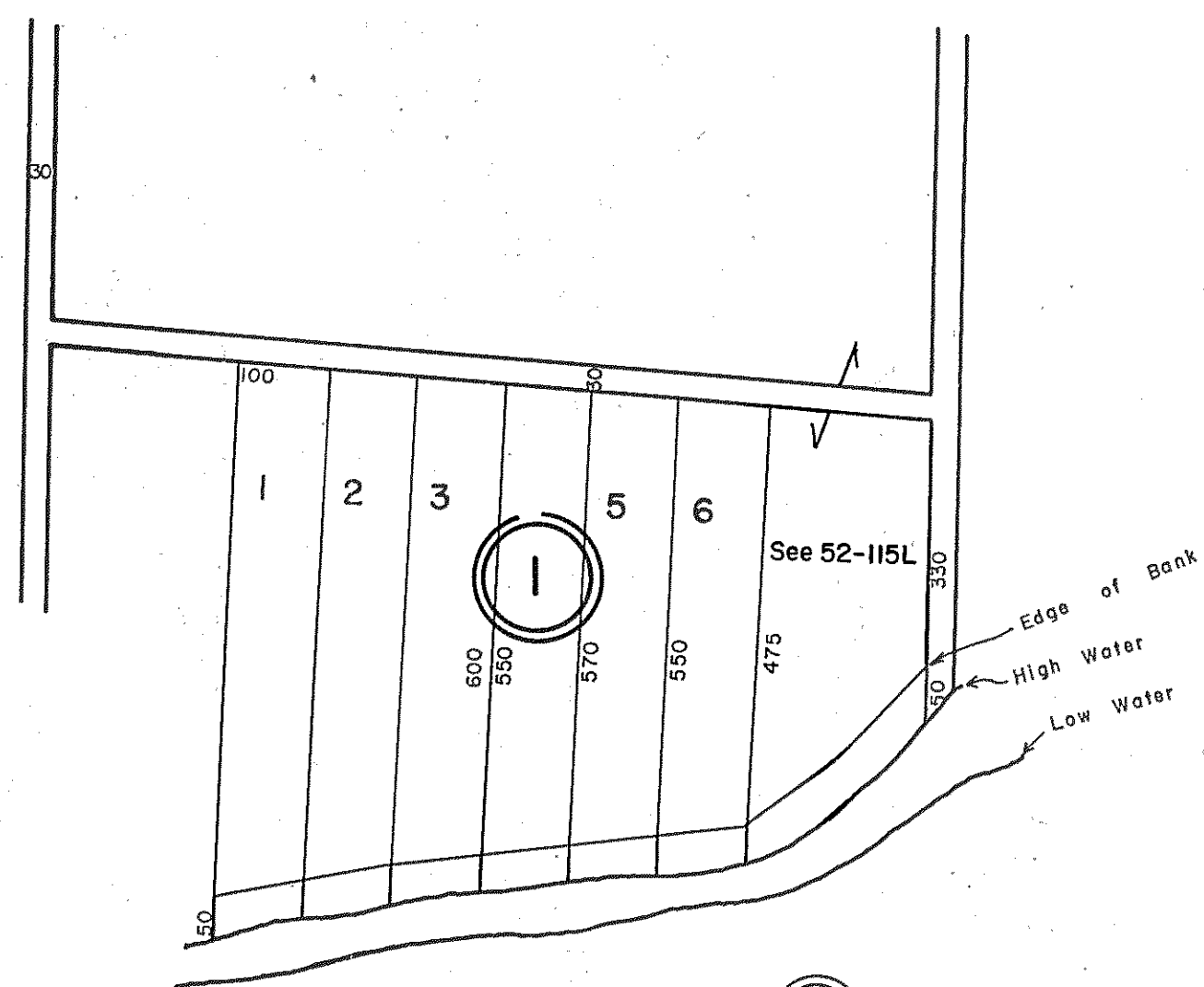
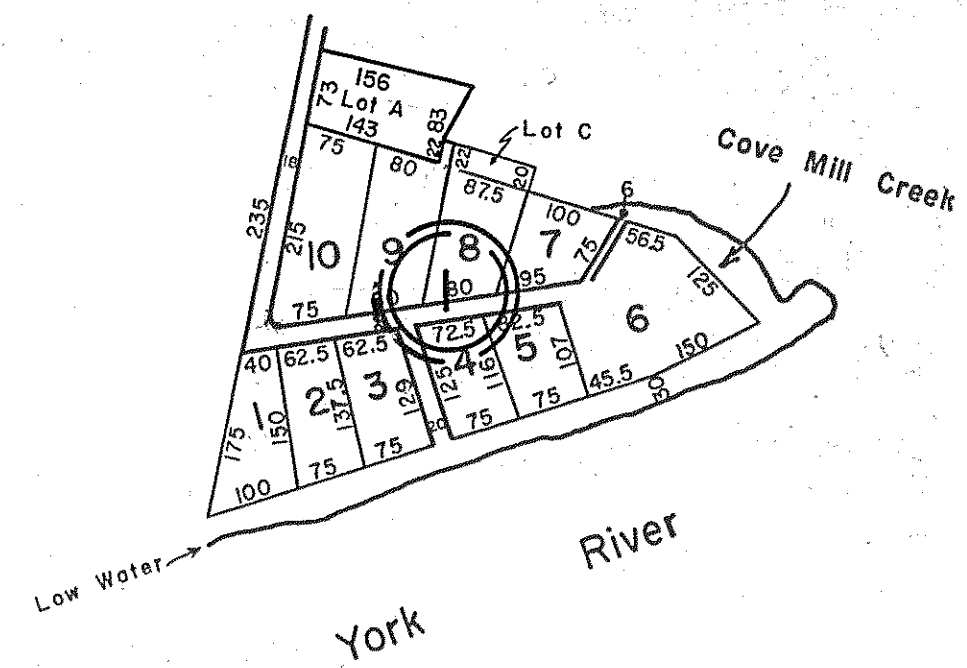


GLOUCESTER COUNTY



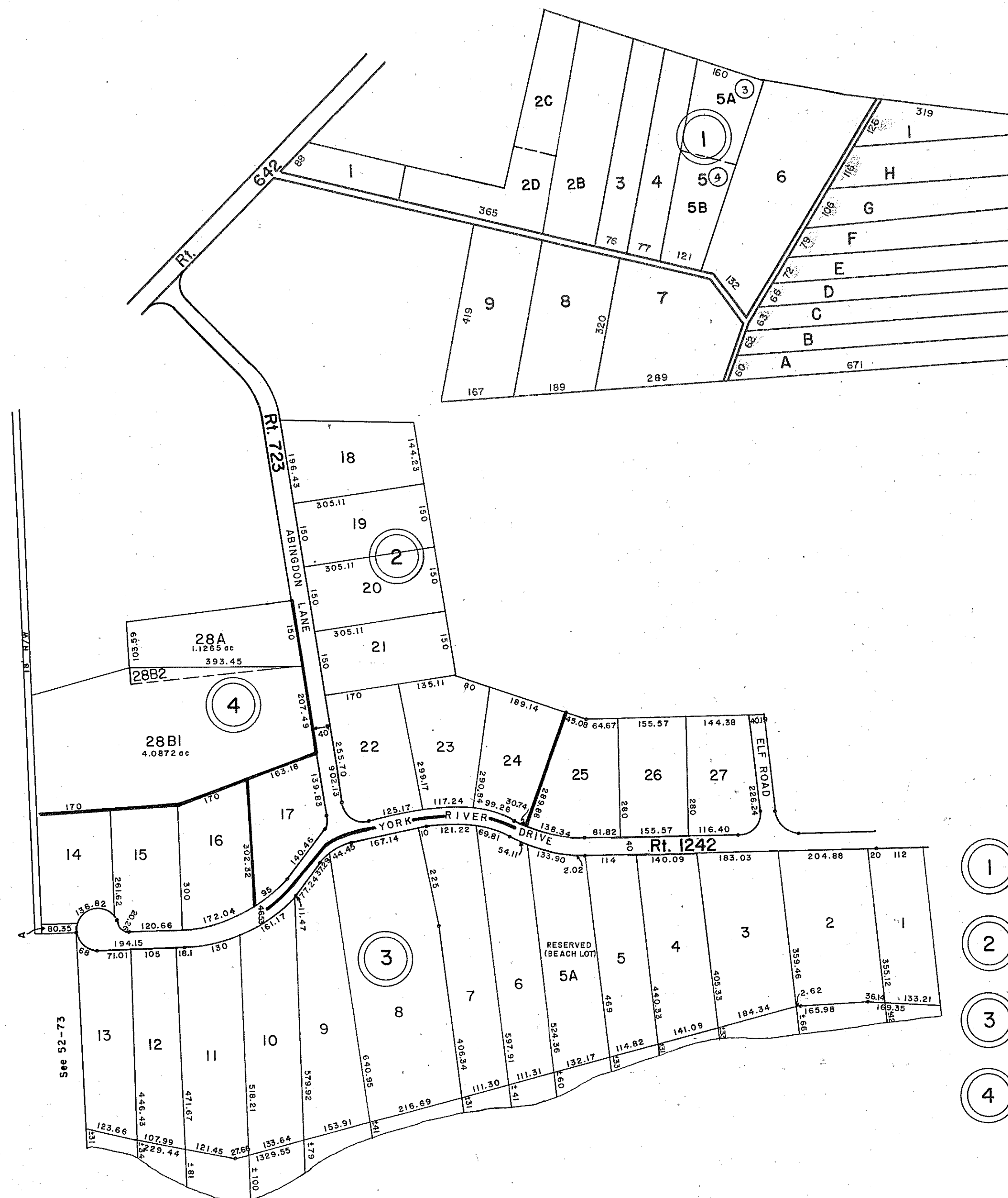
York River (1) ELIZ. H. COXE PLAT
 P.B.1, Pg.339 &
 P.B.5, Pg.24
 Revised Lots 7&8, P.B.24-242, 5/28/02

INSERT 52B



(1) ADELE R. WARRINER SUBDIVISION
 P.B.1, Pg.315
 Revised Lot A, P.B.25, Pg.904, 10/21/09

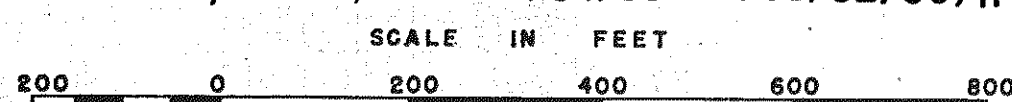
INSERT 52C



- (1) B. F. JENKINS PLAT - P.B. 1, Pg. 164
& REVISED PLAT - P.B.15, Pg.107
- (2) YORK RIVER FARMS, SECTION 1 -
P.B., LOTS 17-24
- (3) YORK RIVER FARMS, SECTION 2 -
P.B., LOTS 1-16 & 25-27
- (4) LOT 14 REVISED P.B.21, Pg.370 8/10/88
YORK RIVER FARMS, SECTION 3 -
P.B.8, pg.44, LOTS 28A & 28B

INSERT 52A

REV. 1/63, 12/75, 12/31/83/84/88/92/98/02/09/11



YORK DISTRICT

VIRGINIA STATE DEPARTMENT OF TAXATION, DIVISION OF REAL ESTATE APPRAISAL AND MAPPING

INSERT 52A,B,C