



County of Gloucester
Central Purchasing Department
6489 Main Street, Suite 324
Gloucester, Virginia 23061
(804) 693-6235 V (804) 693-0061 F

July 15, 2020

ADDENDUM NO. 2

Solicitation: Invitation for Bid: #IFB 20-020-CJ FEMA HMGP Foundation/Masonry Contractor

The following additions, deletions, and/or modifications are to be incorporated with the Contract Documents.

Questions and Answers:

- 1. Question:** Concerning the continuous bond beam indicated on the plans for both Big Oak and Line Fence, how are we supposed to have a continuous bond beam at the top course with the house movers steel beams in the way?

Answer: For 8099 Big Oak Lane, the bond beam is a few courses lower than the top plate so the lifting steel will not interfere with the bond beam. See attached sketch for 9956 Line Fence. The bond beam will not be continuous and will have a gap for the lifting steel. All of the rebar, anchor bolts, and top plates will be in place and the block filled where there is no lifting steel. The bond beam will provide a solid course for attachment of anchor bolts, ties, and straps. Its structural purpose is to tie the wall together and to create smaller shear wall panels as well as act as an uplift beam connecting the vertical dowels to the raised house. After the lifting steel is removed, the block will be infilled, and the top plate installed. Rebar will not be tied from the infill section into the bond beam.

Please sign and include this Addendum with the Bid to certify the information contained in this Addendum is incorporated in your submittal.

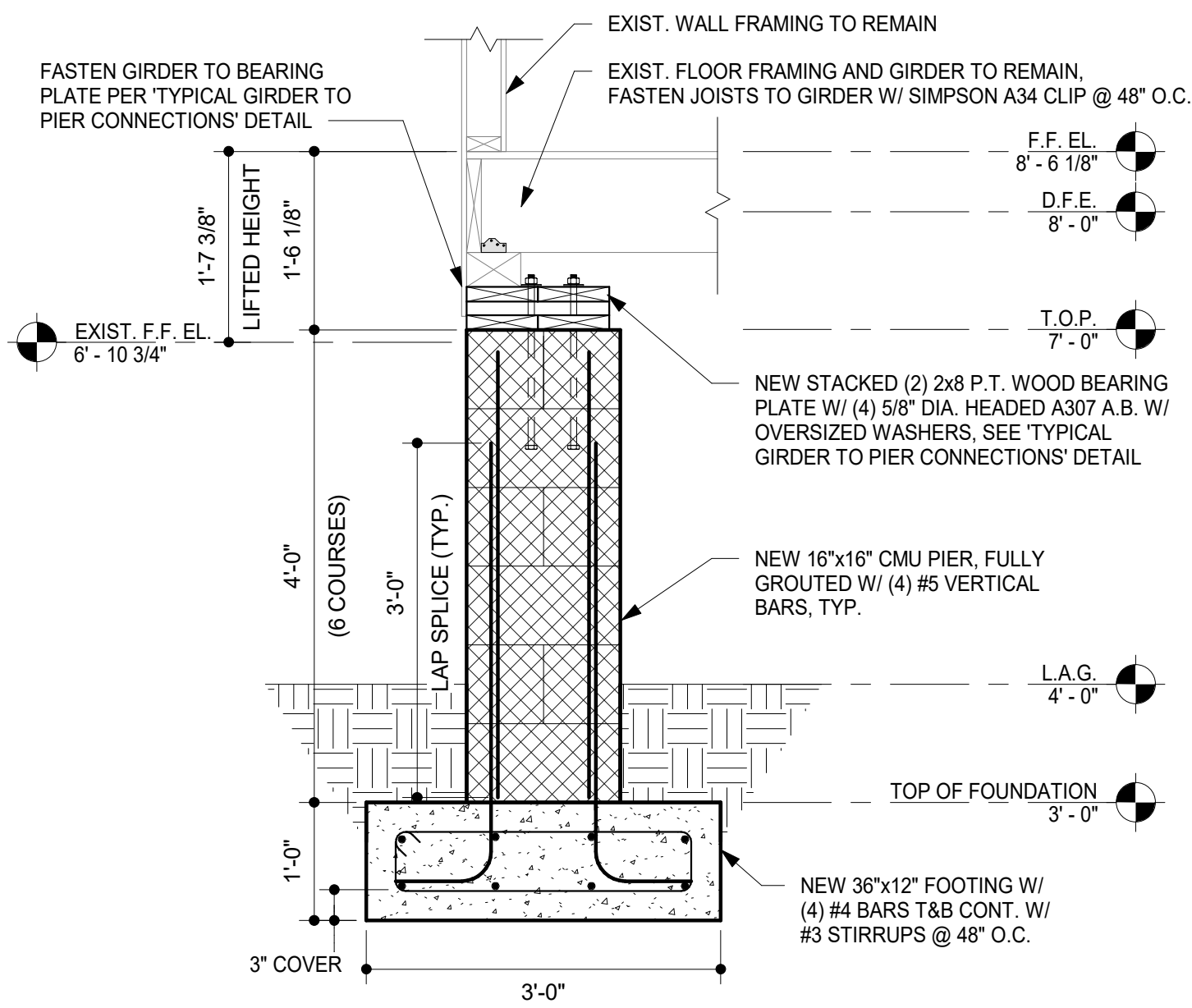
Christine Joyce, CPPB, VCA
Senior Buyer

Name of Firm

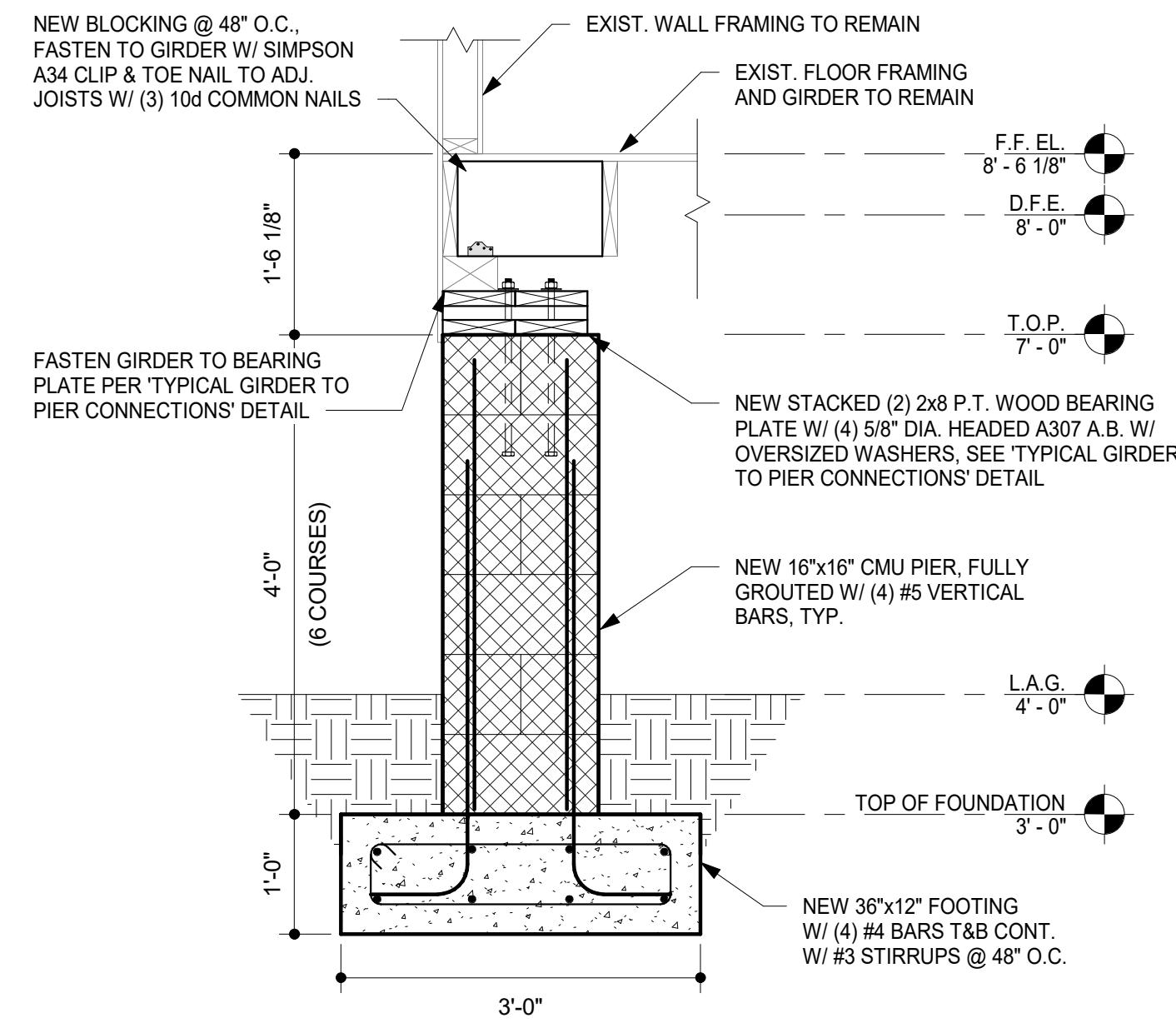
Date

Signature

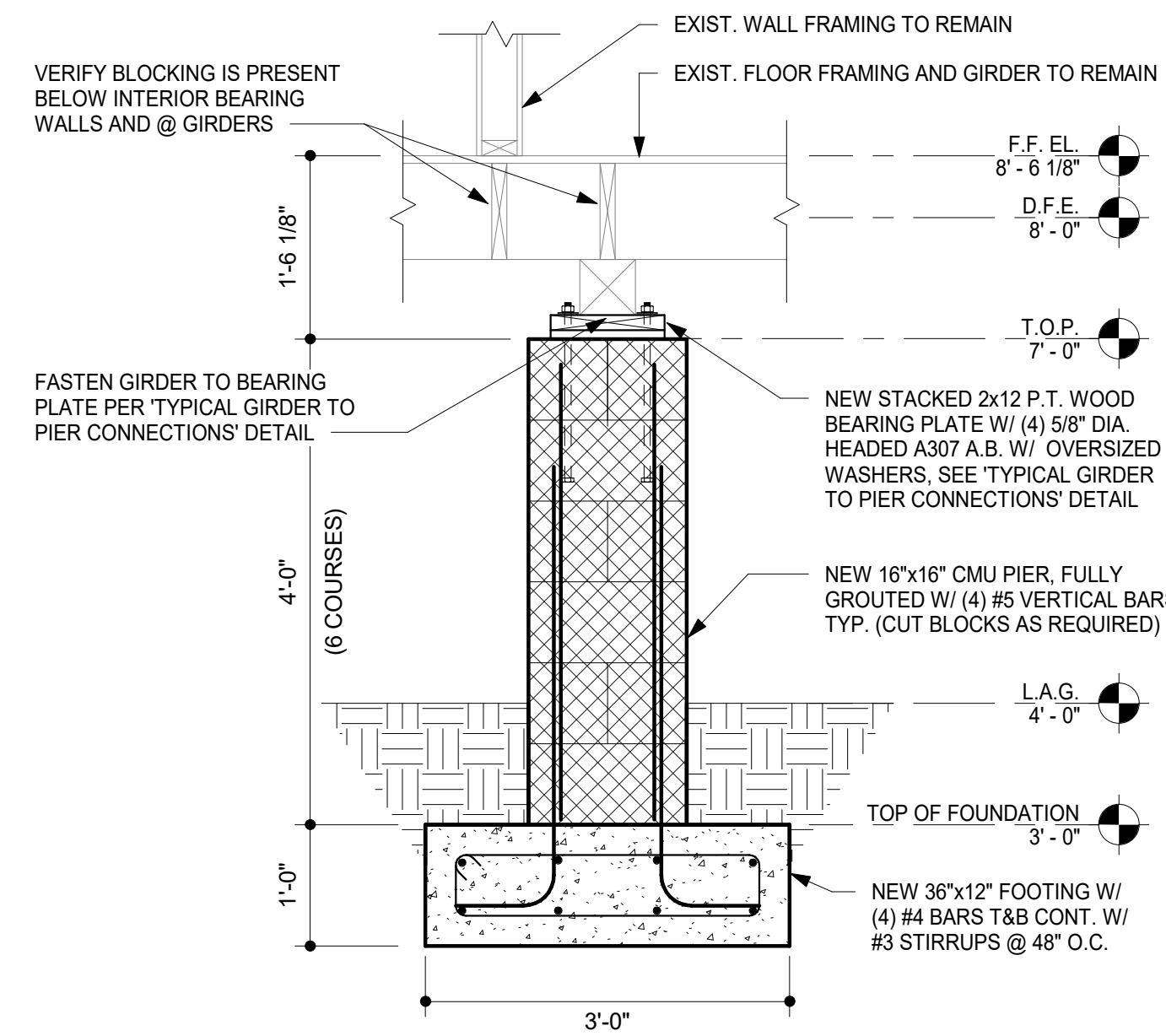
Date



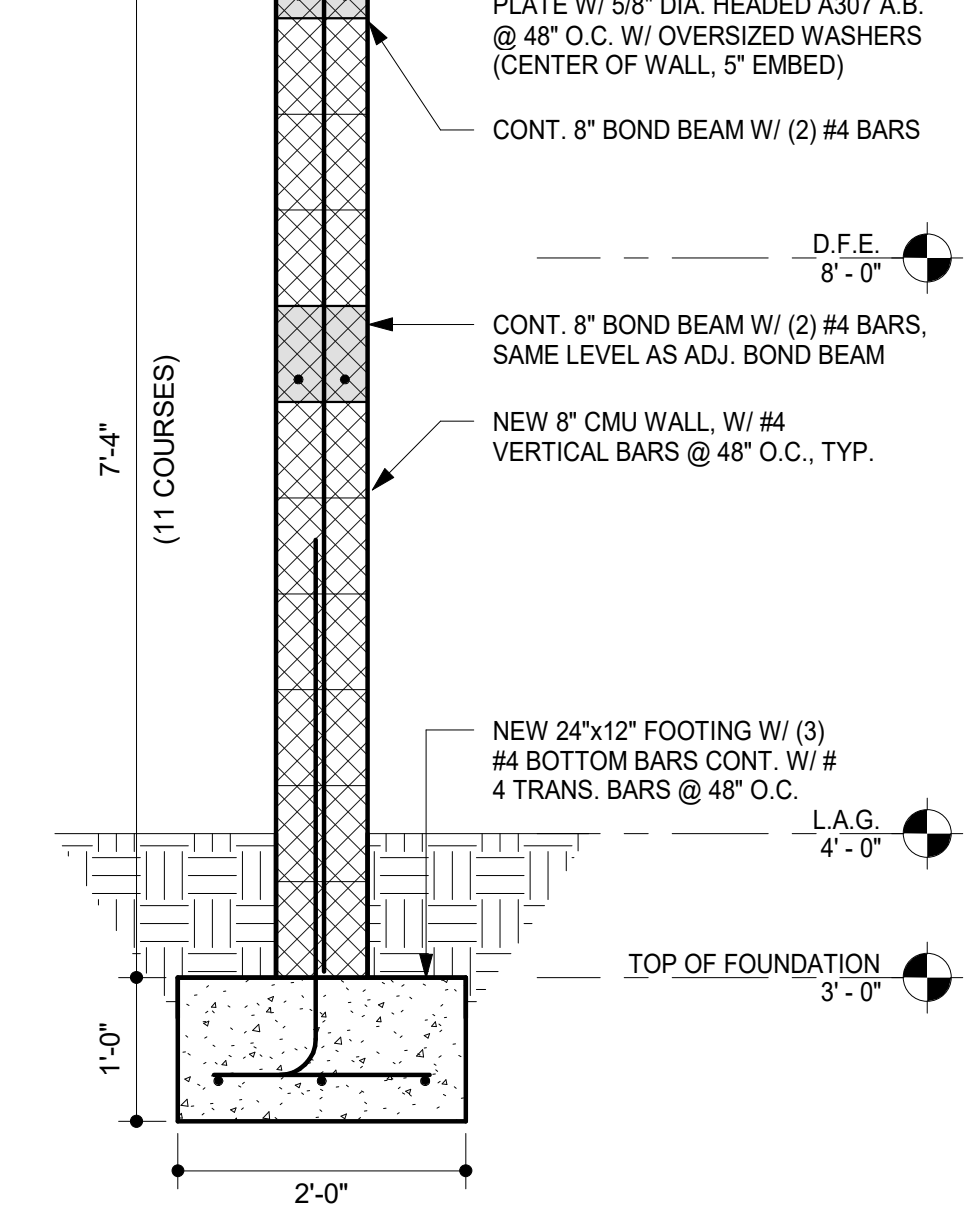
1 MAIN HOUSE EXT. GIRDER
S2.01 3/4" = 1'-0"



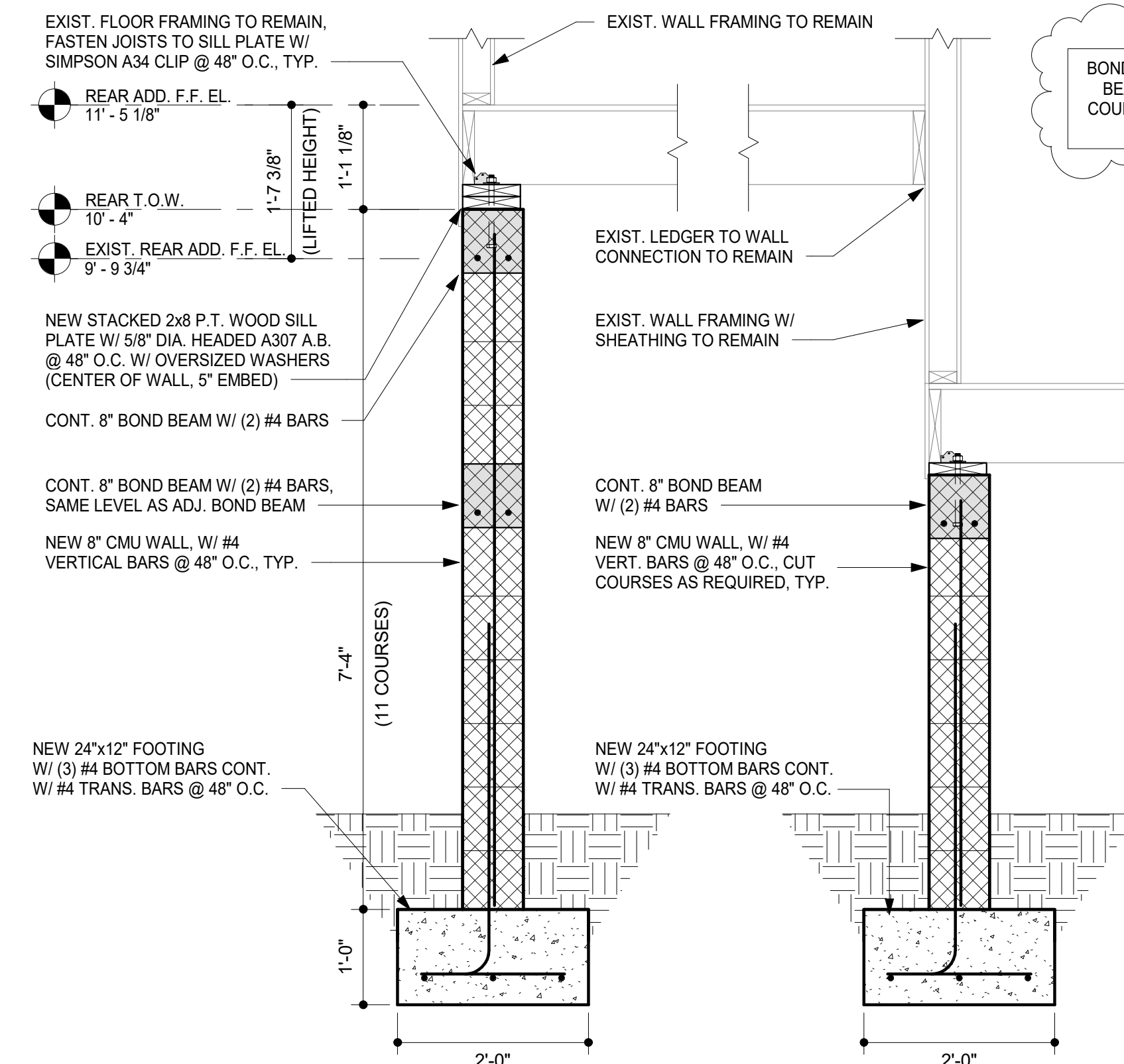
2 MAIN HOUSE END GIRDER
S2.01 3/4" = 1'-0"



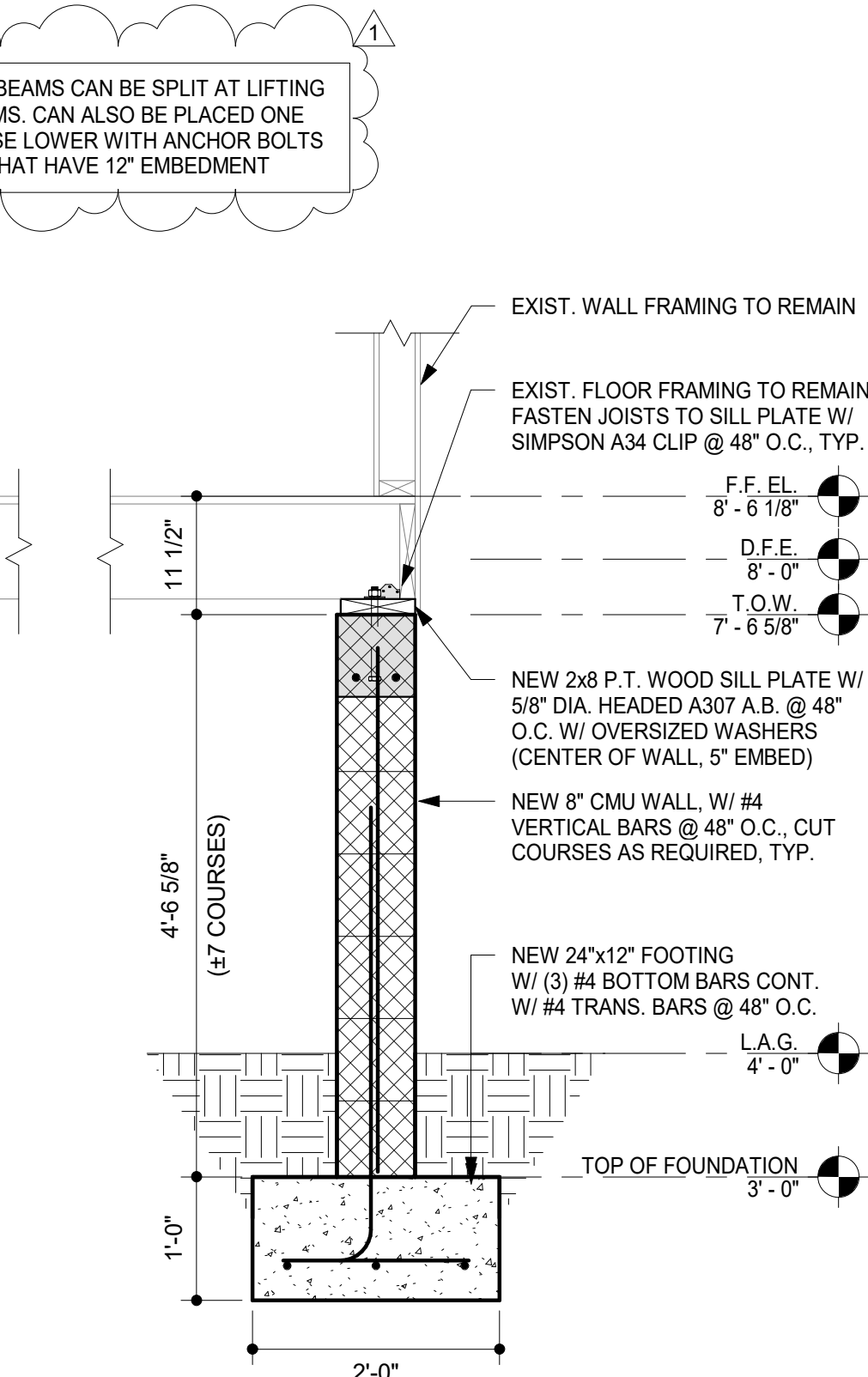
3 MAIN HOUSE INT. GIRDER
S2.01 3/4" = 1'-0"



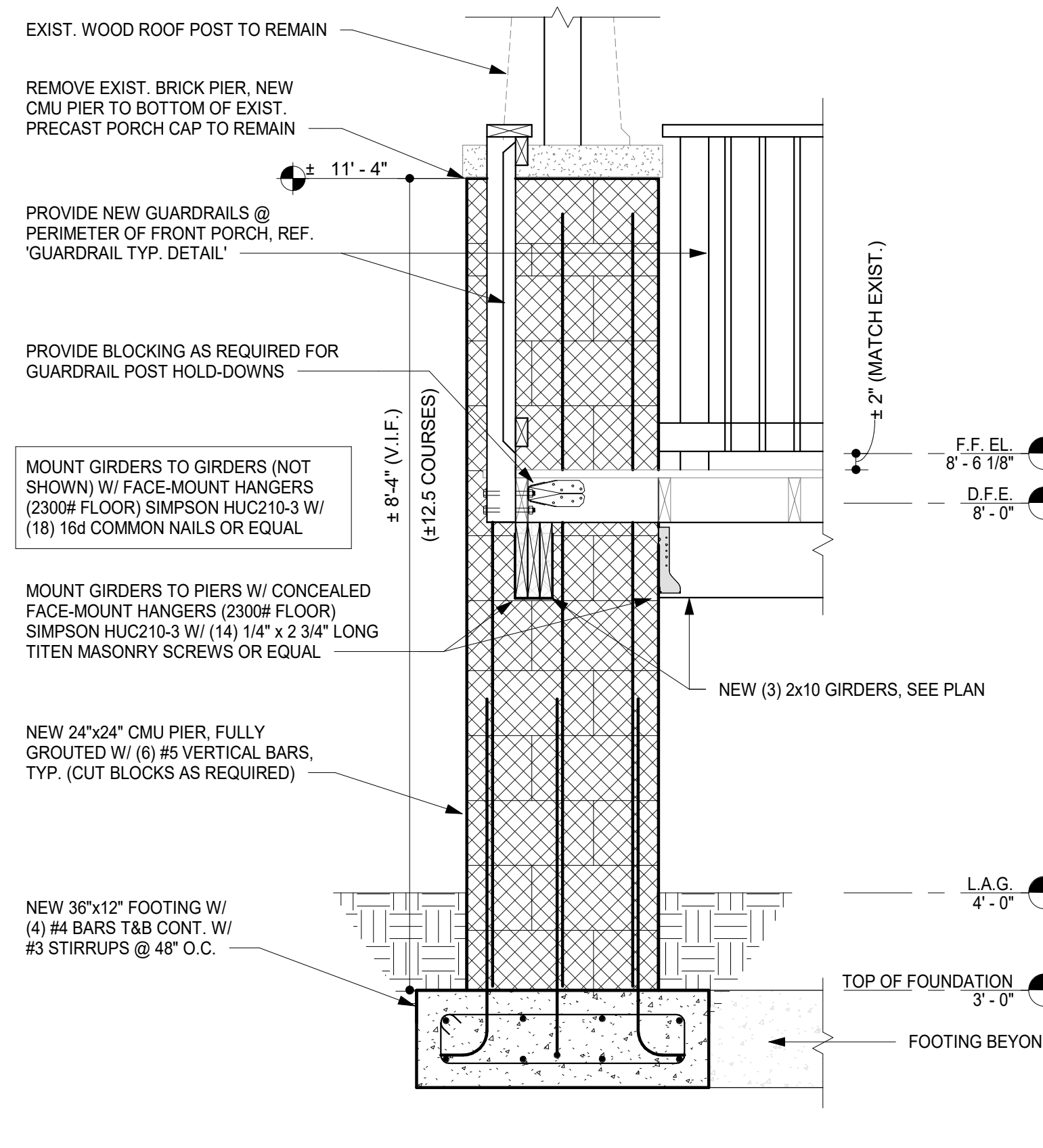
4 REAR ADD. PARALLEL FRAMING
S2.01 3/4" = 1'-0"



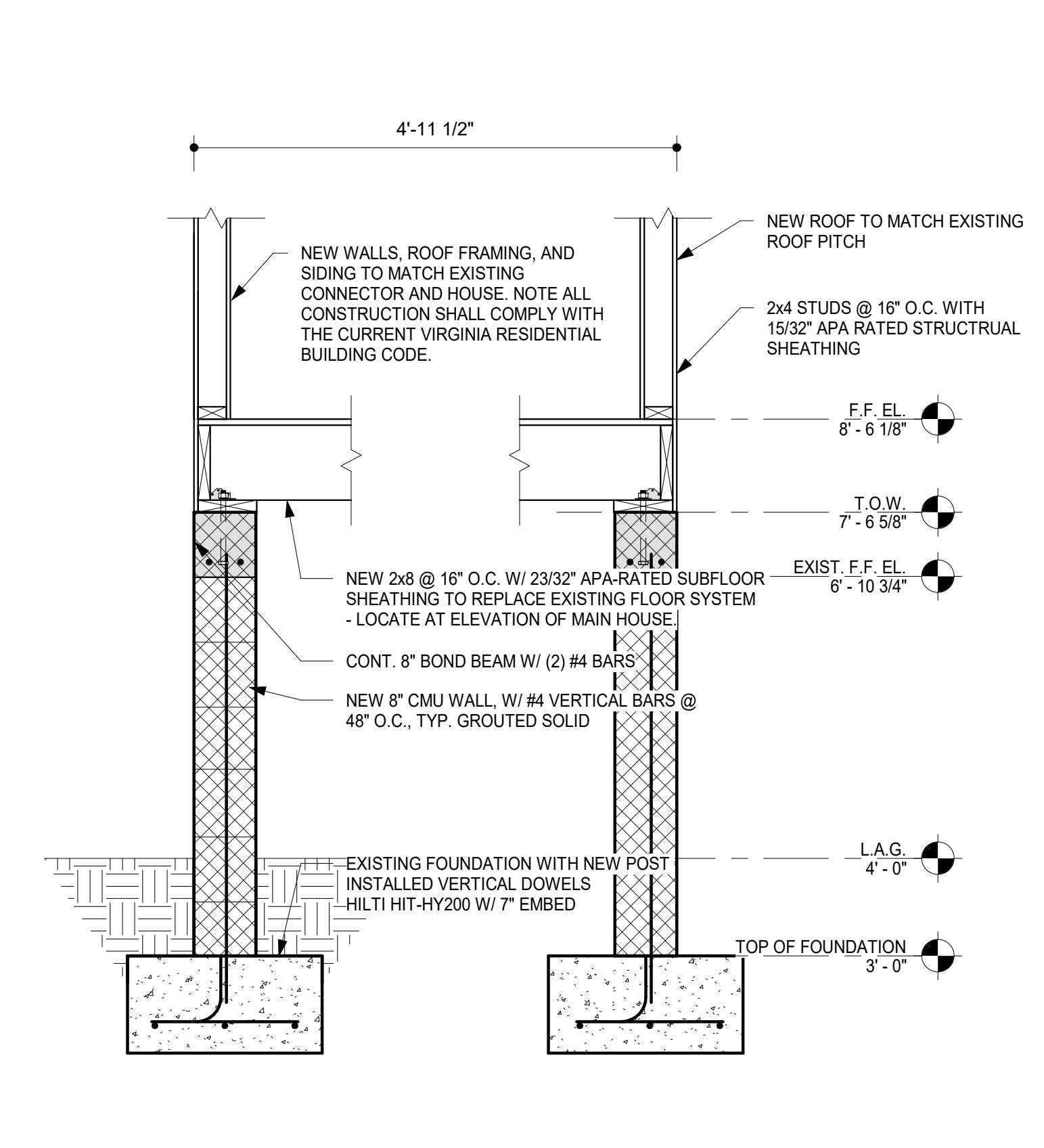
5 REAR ADD. COMBINED SECTION
S2.01 3/4" = 1'-0"



6 FRONT PORCH SECTION
S2.01 3/4" = 1'-0"



7 CONNECTOR HALL SECTION
S2.01 3/4" = 1'-0"



REVISION SCHEDULE	
#	Revision Description
1	BOND BEAM NOTE
	Date: 07/15/2020

FOUNDATION SECTIONS AND DETAILS
ENGINEERED FOUNDATION

GREENLEY RESIDENCE
9956 LINE FENCE ROAD
GLOUCESTER COUNTY
HAYES, VIRGINIA 23072

Date: 06/09/2020
Drawn: ZMA
Checked: ERW
Project: #18324EW

S2.01